

# FAISALABAD REGIONAL DEVELOPMENT PLAN

## TOURISM SECTOR PLAN



**The Urban Unit**

Urban Sector Planning & Management Services Unit (Pvt.) Ltd.



## **Disclaimer**

Urban Sector Planning and Management Sector Unit (Pvt.) Ltd. has prepared this report as Tourism Sector Report for Faisalabad Division. Maximum care and caution were observed while developing this document.

No part of this document may be reproduced or transmitted in any form or by any mechanism including photocopying, recording or information storage and retrieval without the express permission, in writing, by the competent authority.

The opinions expressed in this document are solely those of the authors and publishing in no way constitutes endorsement of the opinion by Urban Unit.

## **Technical Team**

Ms. Nadia Naeem Qureshi, Senior Specialist, Urban Planning and Architecture

Ms. Nida Akhtar, Senior Research Analyst, Urban Planning

Mr. Nasir Javaid, Senior Research Analyst, Urban Planning

Mr. Hashid Sarfraz, Research Analyst, Architecture

Mr. Sultan Mehmood, Research Associate, Urban Planning

Mr. Shahrukh Qazi, Research Associate, Architecture



## TABLE OF CONTENTS

Disclaimer.....	2
Technical Team.....	2
TABLE OF CONTENTS.....	3
LIST OF FIGURES .....	5
LIST OF TABLES .....	8
LIST OF MAPS .....	8
SECTION 1: OVERVIEW .....	10
1.1. Study Area.....	10
1.2. Objectives.....	10
SECTION 2: METHODOLOGY .....	11
2.1. Inception Visit.....	11
2.2. Baseline Study.....	11
2.3. Site Visits and Stakeholder Consultation Session .....	12
2.4. Spatial Analysis of Tourism Activity .....	19
2.5. Proposed Framework for Tourism Development .....	20
2.6. Proposed Interventions for Tourist Sites .....	20
SECTION 3: FRAMEWORK.....	20
3.1. Inventory and Data Collection .....	20
3.2. Identification of Tourism Potential Sites.....	21
3.3. Capacity Building of Service Providers .....	21
3.4. Marketing and Communication Strategy .....	21
3.5. Site-Specific Action Plans .....	21
SECTION 4: TOURISM POTENTIAL IN FAISALABAD .....	21
4.1. Context – Tourism in Pakistan .....	21
4.2. Inventory of Tourist Sites in Faisalabad Division .....	23
4.3. Tourism Influx in Faisalabad Division .....	27
SECTION 5: PROPOSED SITE-SPECIFIC INTERVENTIONS .....	29
5.1. Faisalabad District .....	29
5.1.1 D- Ground.....	29



5.2. Jhang District.....	34
5.2.1. Trimmu Barrage .....	34
5.2.2. Mai Heer Tomb .....	38
5.2.3. Municipal Stadium, Jhang .....	42
5.2.4. Mai Heer Stadium.....	46
5.2.5. Shah Jeewana Shrine .....	48
5.3. Toba Tek Singh District.....	53
5.3.1. Sultan Bahoo Shrine .....	53
5.3.2. Teko Park.....	57
5.3.3. Rajana Forest Bhagat Wildlife Park .....	60
5.4 Chiniot District.....	64
5.4.1. Boo Ali Qalandar Shrine .....	64
5.4.2. TDCP Picnic Point.....	67
5.4.3. Heritage Trail from Shahi Masjid to Omer Hayat Mahal.....	71
SECTION VI: IMPLEMENTATION TIMELINE.....	86



## LIST OF FIGURES

Figure 1: Methodology for Development of Tourism Sector Report .....	11	
Figure 2: Stakeholder Consultative Sessions at Jhang District.....	12	
Figure 3: Stakeholder Consultative Sessions at Faisalabad District.....	12	
Figure 4: Stakeholder Consultative Sessions at Chiniot District.....	13	
Figure 5: Stakeholder Consultative Session at Toba Tek Singh District.....	14	
Figure 6: The Historic Clock Tower, Faisalabad District.....	14	
Figure 7: Lyallpur Museum, Faisalabad District .....	15	
Figure 8: Omar Hayat Mahal, Chiniot District .....	15	
Figure 9: A Shrine of Hazrat Boo Ali, Chiniot District.....	16	
Figure 10: The Shahi Masjid, Chiniot District.....	16	
Figure 11: Hazrat Sultan Bahu Shrine, Jhang District.....	16	
Figure 12: Park at Trimmu Barrage, Jhang District.....	17	
Figure 13: Mai Heer Tomb, Jhang District.....	17	
Figure 14: Teko Park, Toba Tek Singh District.....	18	
Figure 15: Rivaz Bridge, Jhang District .....	18	
Figure 16: Shah Jeewana Shrine, Jhang District.....	18	
Figure 17: Sheesh Mahal, Chiniot District .....	19	
Figure 18: Rajana Wildlife Park, Toba Tek Singh District .....	19	
Figure 19: Framework for Tourism Development.....	20	
Figure 20: Tourism Sector Spending Characteristics .....	23	
Figure 21: Categorization of Tourism Sites.....	24	
Figure 22: Heritage Tourist Sites in Faisalabad Division.....	25	
Figure 23: Religious Sites in Faisalabad Division.....	26	
Figure 24: Ecotourism & Recreational Sites in Faisalabad Division .....	27	
Figure 25: View of D-Ground, Faisalabad .....	31	
Figure 26: Food points at D-Ground, Faisalabad.....	31	
Figure 27: Layout of Upgradation and Revitalization proposal for D-Ground .....	32	
Figure 28: Conceptual render of Upgradation and Revitalization proposal for D-Ground .....	33	
Figure 29: Kiosks for local food sellers	Figure 30: Proposed Temporary shading .....	33
Figure 31: Existing Condition of the Park at Trimmu Barrage .....	36	
Figure 32: Food Point at Trimmu Barrage.....	36	
Figure 33: Main Road at Trimmu Barrage .....	36	
Figure 34: Trimmu Barrage, Jhang.....	36	
Figure 35: Reference images for Proposed Amenities for Park at Trimmu Barrage.....	38	
Figure 36: Landmarks near Mai Heer Tomb .....	40	
Figure 37: Encroachments on Entrance roadway to Heer's Tomb.....	40	
Figure 38: Court area besides the Tomb .....	41	
Figure 39: Tomb of Heer .....	41	
Figure 40: Interior view of the tomb.....	41	
Figure 41: Reference Images for upgradation measures at Mai Heer Tomb, Jhang.....	42	
Figure 42: Ground of Municipal Stadium.....	43	
Figure 43: Interior side of the entryway .....	44	
Figure 44: Entrance of the stadium.....	44	
Figure 45: Upgradation of seating pavilion	Figure 46: Lighting for nighttime sports events	45

Figure 47: Parking facility .....	45
Figure 48: Lack of maintenance at the Mai Heer Stadium, Jhang .....	47
Figure 50: Stadium facility designed with .....	48
Figure 49: Proposed Public restrooms .....	48
Figure 51: Parking facility at the stadium .....	48
Figure 52: Entrance gateway to Shah Jeewana Shrine .....	51
Figure 53: Interior court at the shrine .....	51
Figure 54: Courtyard of shrine .....	51
Figure 55: Existing condition at the entrance .....	51
Figure 56: Kiosks for small shops .....	52
Figure 57: Public amenities .....	52
Figure 58: Reference Images for upgradation measures at Shah Jeewana Shrine, Jhang .....	53
Figure 60: Existing conditions outside the shrine .....	55
Figure 59: Entrance at Sultan Bahoo Shrine complex .....	55
Figure 61: Interior view of Sultan Bahoo complex .....	55
Figure 62: Devotees gathered inside the complex .....	55
Figure 64: Chiragah Place .....	55
Figure 64: Chiragah Place at the Saltan Bahoo shrine complex .....	56
Figure 65: Proposed green spaces surrounding the Shrine Complex .....	56
Figure 66: Paved parking area .....	57
Figure 67: Structures for small shops .....	57
Figure 68: No parking facility for the visitors of park .....	58
Figure 69: Unpaved and poorly maintained park .....	58
Figure 70: Sitting Area of Park .....	59
Figure 71: Green Spaces in the Park .....	59
Figure 73: Conceptual design of upgradation of Teko park, Toba Tek Singh .....	60
Figure 73: Wild Life Park .....	62
Figure 74: Animals in the wildlife park .....	62
Figure 75: Design proposals for upgradation of wildlife park .....	64
Figure 76: Entrance Gateway to the complex .....	65
Figure 77: Local sellers with temporary roof structures .....	66
Figure 78: Parking facility with green belts .....	67
Figure 79: Provision of public rest areas .....	67
Figure 80: TDCP Park, Chiniot .....	68
Figure 81: Boating facility alongside the TDCP Park .....	68
Figure 82: Play area for kids .....	70
Figure 83: Restaurants and sitting area .....	70
Figure 84: Boating Facility .....	71
Figure 85: Heritage Trail of Chiniot City .....	72
Figure 86: Chinniot Bazar .....	73
Figure 87: Exhibition Space .....	75
Figure 88: Food Court and Shahi Sawari .....	75
Figure 89: Existing Condition of Omer Hayat Mahal .....	<b>Error! Bookmark not defined.</b>
Figure 90: Existing Condition of Facades of Omar Hayat Mahal .....	77
Figure 91: Existing Condition of Park and Interior of Omar Hayat Mahal .....	77
Figure 92: Existing Condition of Shahi Masjid .....	81

Figure 93: Existing Condition of Sheesh Mahal..... 82



## LIST OF TABLES

Table 1: Pakistan Travel & Tourism Data .....	22
Table 2: List of Destinations Attracting More 0.1-0.5 Million Visitors Annually .....	27
Table 3: Implementation Timeline for Tourism Sector Projects .....	86

## LIST OF MAPS

Map 1: Location Map of Faisalabad Division .....	10
Map 2: Location Map of D-Ground, Faisalabad.....	29
Map 3: Important Landmarks near D-Ground, Faisalabad.....	30



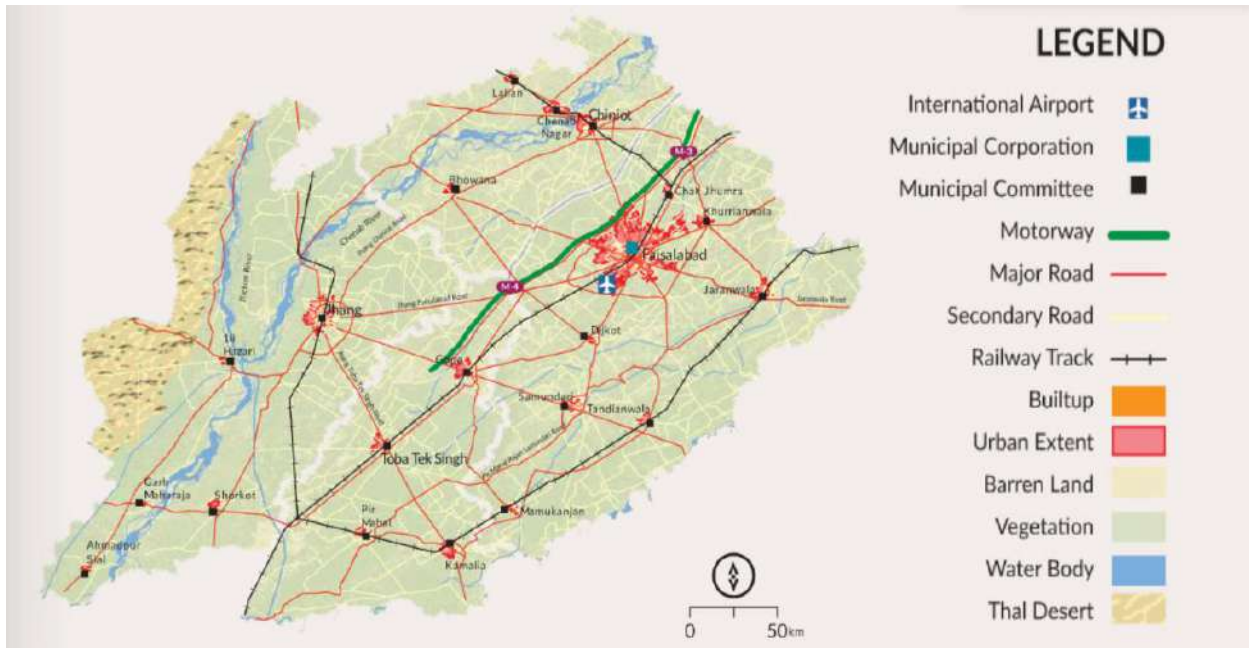
Map 4: Upgradation and Revitalization Proposal Site at D-Ground, Faisalabad .....	32
Map 5: Road Connectivity Map of Head Trimmu Barrage, Jhang.....	35
Map 6: Location Map of Head Trimmu Barrage, Jhang.....	35
Map 7: Road Connectivity Map of Mai Heer Tomb, Jhang .....	39
Map 8: Location Map of Mai Heer Tomb, Jhang .....	39
Map 9: Location Map of Muncipal Stadium, Jhang .....	43
Map 10: Location of Mai Heer Stadium, Jhang.....	46
Map 11: Connectivity map of Shah Jeewana shrine, Jhang.....	49
Map 12: Location Map of Shah Jeewana Shrine, Jhang.....	50
Map 13: Road Connectivity Map of Sultan Bahoo Shrine, Toba Tek Singh .....	54
Map 14: Location map of Sultan Bahoo Shrine, Toba Tek Singh.....	54
Map 15: Landmarks near Teko Park, Toba Tek Singh.....	58
Map 16: Location of Rajana Forest Bhagat Wildlife Park, Toba Tek Singh.....	61
Map 17: Layout Map of Upgradation Proposal for Rajana Forest Bhagat Wildlife Park .....	63
Map 18: Connectivity Map of Boo Ali Qalandar Shrine, Chiniot.....	64
Map 19: Location of Boo Ali Qalandar Shrine, Chiniot.....	65
Map 20: Location of TDCP Park, Chiniot .....	67
Map 21: River Front Rehabilitation Zone.....	69
Map 22: Rehabilitation Proposal of River Front.....	70
Map 23: Location Map of Omar Hayat Mahal .....	76
Map 24: Location of Shahi Masjid .....	78
Map 25: Location Map of Sheesh Mahal.....	82



## SECTION 1: OVERVIEW

### 1.1. Study Area

The area for the Faisalabad Regional Plan comprises of the entire Faisalabad Division, which includes four districts i.e., Faisalabad District, Chiniot District, Jhang District, and Toba Tek Singh District. It is located at the North-Center of the Punjab Province. The division is connected to important highways and rail-road networks. For instance, the M-3 and M-4 bypass connects with the Faisalabad Division, while the Railway tracks are also available in its



Map 1: Location Map of Faisalabad Division

Source: The Urban Unit

districts.

### 1.2. Objectives

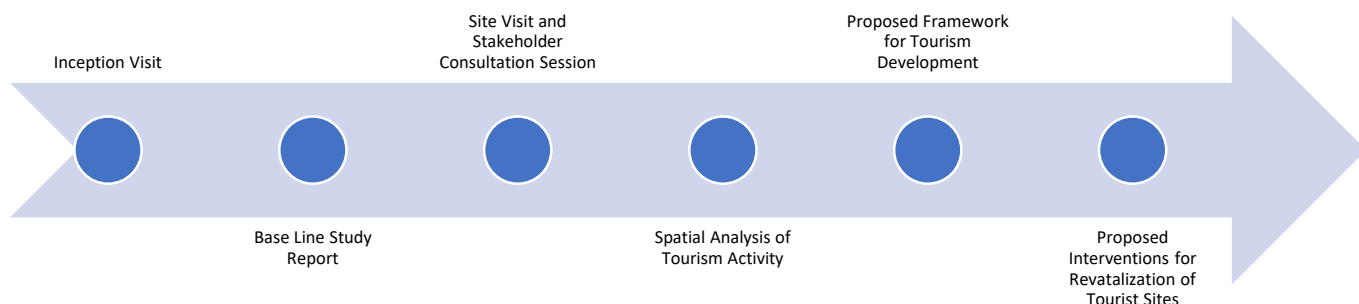
The essential objectives of the Tourism Plan for Faisalabad Region are mentioned below:

- To preserve the cultural and heritage sites in the region
- To boost tourism in the region by utilizing tourism potential of relevant sites in the region
- To develop a strategy and a framework for formulating goals for promoting tourism in the forthcoming Master Plan

- To develop a long-term policy framework and vision for tourism development in the region, that focuses on evidence-based interventions, capacity building of stakeholders, comprehensive marketing strategy, and investing in supporting infrastructure.
- To create economic opportunities in the region through promoting tourism
- To formulate plans for upgrading recreational facilities in the region

## SECTION 2: METHODOLOGY

The methodology that has been adopted for carrying out Tourism study in the Faisalabad region is illustrated below.



**Figure 1: Methodology for Development of Tourism Sector Report**

Source: The Urban Unit

### 2.1. Inception Visit

In order to understand the key features of the region, inception visits were made to all four districts of the Faisalabad Region. These visits also included an initial consultative workshop with the relevant stakeholders including the division and district administration. The inception visits provided a basic understanding about the tourism potential in the region.

### 2.2. Baseline Study

A baseline study was also carried out in the Faisalabad region. This consisted of situational assessment surveys that have been conducted to collect detailed information on the existing condition of tourist sites, and their future potential.

### 2.3. Site Visits and Stakeholder Consultation Session

Consultation with major stakeholders is essential for carrying out regional planning. The stakeholders are better cognizant of their indigenous problems. It is imperative in the planning process to ensure their intelligent participation so that the real situation of each tourist site is being identified and addressed through the plan's development initiatives. There are numerous stakeholders whose plans, aspirations, views, and data sets can contribute to informed decision-making with respect to Tourism Planning. Therefore, the Urban Planning and Architecture team conducted meetings /sessions with the stakeholders in all four districts of the Faisalabad region. The sessions included official meetings with the Director and Deputy Director (Urban Planning) of the Faisalabad Development Authority (FDA), District Officers in District Councils of four districts, PHATA officials, Municipal Officers of Municipal Committee of 4 districts, and other departments.



**Figure 2: Stakeholder Consultative Sessions at Jhang District**

Source: The Urban Unit

**Figure 3: Stakeholder Consultative Sessions at Faisalabad District**



Source: The Urban Uni

Source: The Urban Unit



**Figure 4: Stakeholder Consultative Sessions at Chiniot District**



**Figure 5: Stakeholder Consultative Session at Toba Tek Singh District**

Source: The Urban Unit

Pertinently, the important sites related to tourism and cultural heritage were also visited in the region. For that purpose, a particular focus was given on exploring such sites which can be used for economic development of the region, with respect to tourism. Furthermore, historic sites and notable religious sites including shrines were also covered.



**Figure 6: The Historic Clock Tower, Faisalabad District**

Source: The Urban Unit



**Figure 7: Lyallpur Museum, Faisalabad District**

Source: The Urban Unit



**Figure 8: Omar Hayat Mahal, Chiniot District**

Source: The Urban Unit



**Figure 10: The Shahi Masjid, Chiniot District**



**Figure 9: A Shrine of Hazrat Boo Ali, Chiniot District**



**Figure 11: Hazrat Sultan Bahu Shrine, Jhang District**

Source: The Urban Unit



**Figure 12: Park at Trimmu Barrage, Jhang District**

Source: The Urban Unit



**Figure 13: Mai Heer Tomb, Jhang District**

Source: The Urban Unit



**Figure 14: Teko Park, Toba Tek Singh District** **Figure 15: Rivaz Bridge, Jhang District**



**Figure 16: Shah Jeewana Shrine, Jhang District**

Source: The Urban Unit



**Figure 17: Sheesh Mahal, Chiniot District**



**Figure 18: Rajana Wildlife Park, Toba Tek Singh District**

Source: The Urban Unit

#### **2.4. Spatial Analysis of Tourism Activity**

Spatial analysis of the tourism activity in the region has also been carried out to develop a detailed inventory of tourism assets, by using Geographical Information System (GIS) and Remote Sensing techniques. This analysis provided important insights about the potential tourism sites in the region which will be helpful in developing focused and targeted interventions in the region.

## 2.5. Proposed Framework for Tourism Development

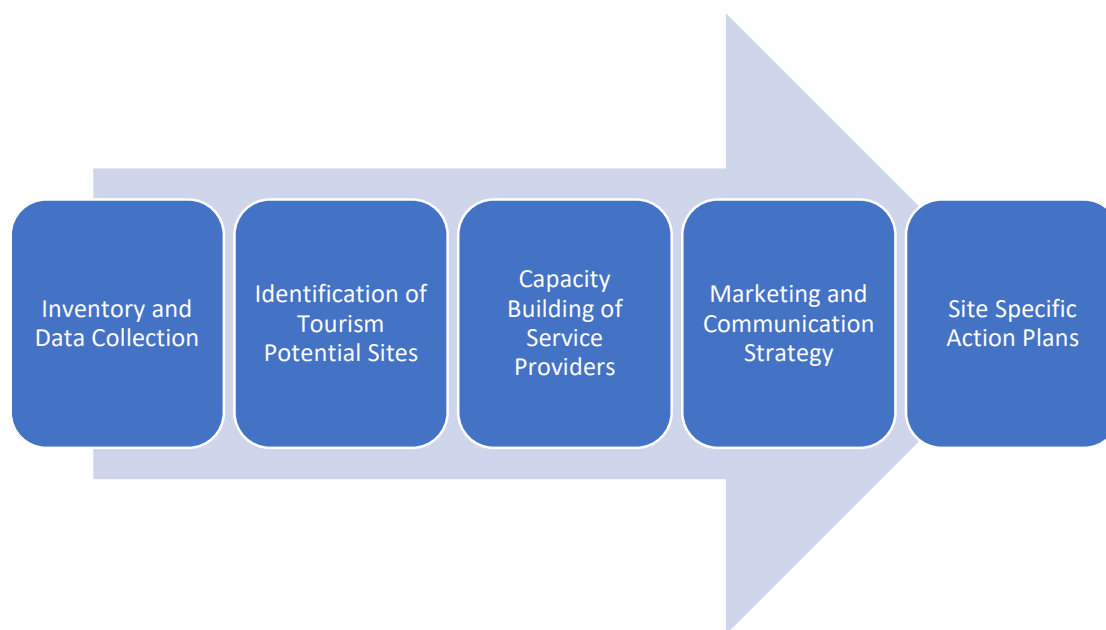
After conducting thorough study and stakeholder consultation session in the region, a framework has been proposed for promoting tourism in the region. Development of long-term policy framework to address current institutional and structural gaps and challenges.

## 2.6. Proposed Interventions for Tourist Sites

Consolidation of data analysis, primary data from field visits, and feedback from stakeholders to develop a short, medium, and long-term framework for tourism sector interventions, alongside detailed site-specific action plans.

## SECTION 3: FRAMEWORK

A holistic and forward-looking framework is needed to serve as a guideline for long term development and capacity building of the tourism sector in Faisalabad. The components of this framework are discussed below.



**Figure 19: Framework for Tourism Development**

Source: The Urban Unit

### 3.1. Inventory and Data Collection

The first step involves gathering data related to the region in the context of tourism promotion and cultural heritage preservation, their situational analysis, number of visitors, their level of satisfaction and feedback etc. This data is missing in the region. This data is required to formulate insights and procedures for promoting tourism and preserving heritage in the region. This will help formulate a long-term policy vision for the tourism Sector in Faisalabad.

### **3.2. Identification of Tourism Potential Sites**

Based on the reconnaissance survey, consultative sessions held and data analysis, potential tourism sites can be identified, such as Omer Hayat, Shahi Masjid, Clock Tower etc.

### **3.3. Capacity Building of Service Providers**

Capacity building of tourism service providers can enable them to improve the provision of services to the potential tourists. Pertinently, the capacity building of the important entities such as hotels and local businesses can ensure improvement in the required services to the potential tourists. Thereby, hoteling, food, and recreational services will be improved as a result. In turn, the tourism services reputation of the region will thrive which will lead to sustainable development of tourism.

### **3.4. Marketing and Communication Strategy**

It is essential to formulate an appropriate marketing and communication strategy for the development of tourism and preservation of heritage in the region. Therefore, an appropriate strategy for that purpose will be created by using social media or conventional marketing strategies for promoting tourism in the region. For example, promotional campaigns for identified tourism sites can be launched over social media platforms to attract the people to visit such sites.

### **3.5. Site-Specific Action Plans**

The tourism sites in the Faisalabad Division which have the highest potential for tourism have been identified. Thereafter, an action plans are proposed for each site to develop the site according to the strategy such as preserving the heritage sites, upgradation of parks and others.

## **SECTION 4: TOURISM POTENTIAL IN FAISALABAD**

### **4.1. Context – Tourism in Pakistan**

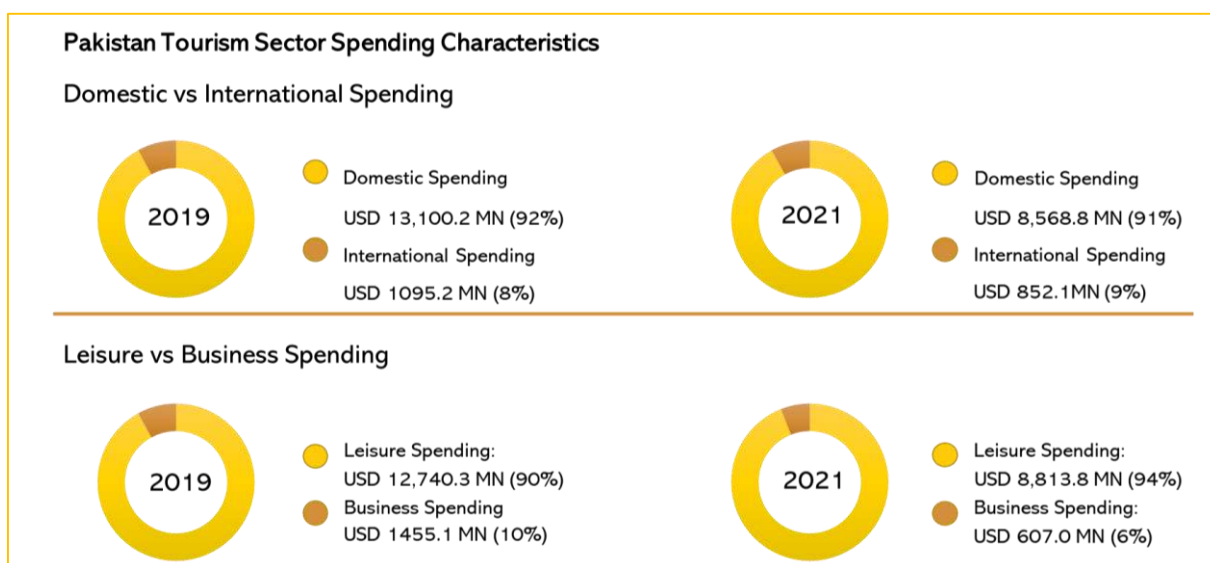
The Pakistani government has increased the emphasis on the potential of the tourism sector in recent years. Due to the pandemic in 2020, the tourism sector has been affected. The overall budget for the tourism sector was also reduced. Subsequently, the overall international spending in 2020 also decreased by 24.4%, and domestic spending fell by 39.4%. Overall, 93% of the expenditure on tourism was done for leisure purposes. In 2021 the overall international spending in increased by 3%, and domestic spending fell by 8%. Overall, 94% of the expenditure on tourism was done for leisure purposes.



**Table 1: Pakistan Travel & Tourism Data**

<b>Pakistan Travel and Tourism Data</b>		
<b>2019</b>	<b>2020</b>	<b>2021</b>
<b>Total contribution of Travel &amp; Tourism to GDP</b>		
5.8% of Total Economy PKR 3,051.4 BN (USD 18,727.7 MN)	3.9% of Total Economy PKR 2,020.4 BN (USD 12,400.0 MN Change: -33.8% Economy Change: -1.3%	3.7% of Total Economy PKR 2,080.6 BN (USD 12,769.5 MN Change: +3.0% Economy Change: +6.0%
<b>Total contribution of Travel &amp; Tourism to Employment</b>		
3.89 MN 6.1% of Total Jobs	3.36 MN 5.2% of Total Jobs Change: -13.7%	3.34 MN 5.1% of Total Jobs Change: -0.5%
<b>Visitor Spend</b>		
International PKR 178.5 BN 3.6% of Total Exports (USD1,095.2 MN)	PKR 134.8 BN 2.8% of Total Exports (USD 827.5 MN) Change: -24.4%	PKR 138.8 BN 2.9% of Total Exports (USD 852.1 MN) Change: +3.0%
<b>Total contribution of Travel &amp; Tourism to Employment</b>		
Domestic PKR 2,134.5 BN (USD13,100.2 MN)	PKR 1292.5 BN (USD 7,932.4 MN) Change: -39.4%	PKR 1,396.2 BN (USD 8,568.8 MN) Change: +8.0%

Source: World Travel and Tourism Council, Country Economic Report, 2022

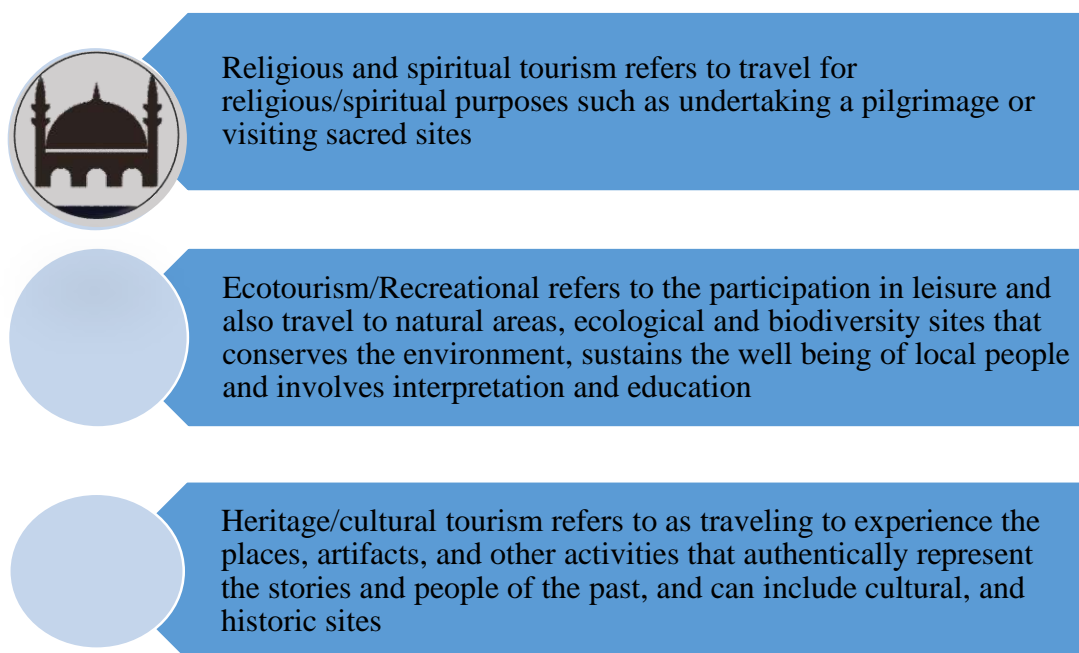


**Figure 20: Tourism Sector Spending Characteristics**

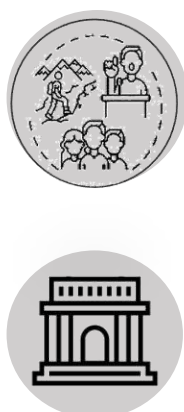
Source: Source: World Travel and Tourism Council, Country Economic Report, 2022

#### 4.2. Inventory of Tourist Sites in Faisalabad Division

The existing tourism sites in Faisalabad Division have been identified and mapped out. The tourist sites inventory of the Faisalabad Division is divided into the following subcategories: Religious and Spiritual tourism sites, Heritage tourism sites, Eco-tourism sites, and Recreational and Cultural tourism sites. Identifying tourism sites based on these categories is useful because it helps identify the reasons why tourists visit these sites and helps develop proposals based on the unique characteristics and potential of the tourist site.

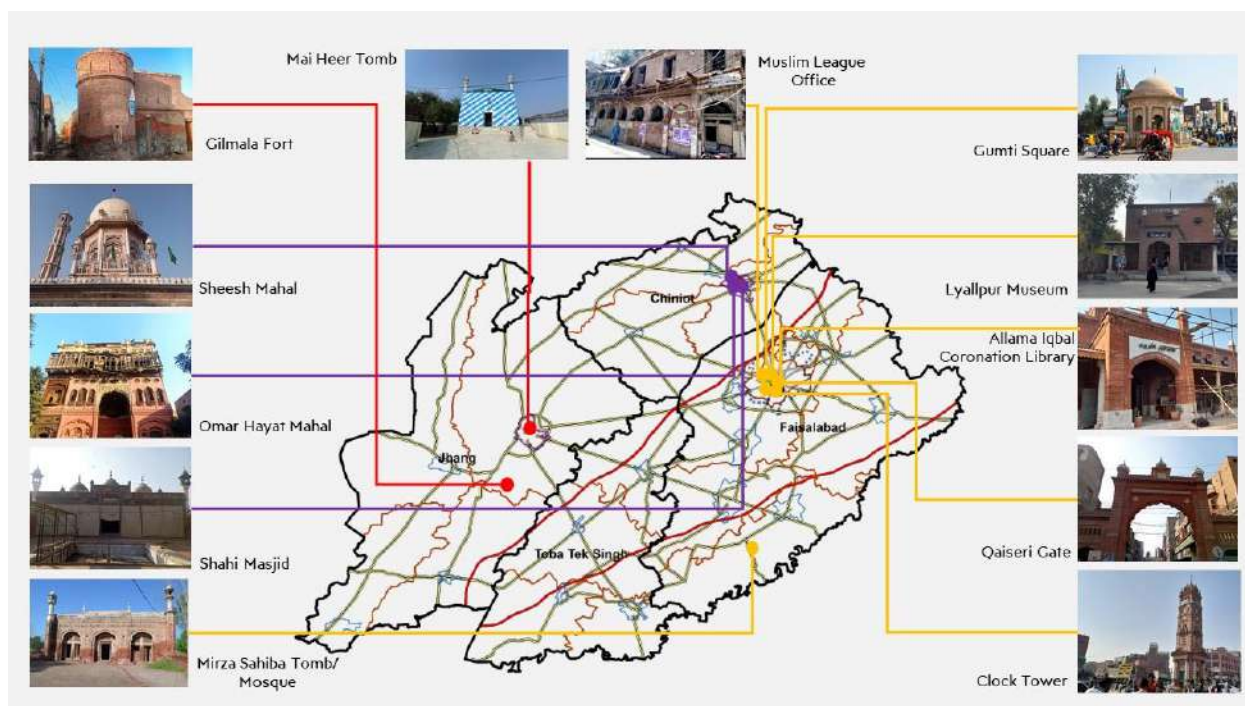


**Figure 21: Categorization of Tourism Sites**



Source: The Urban Unit

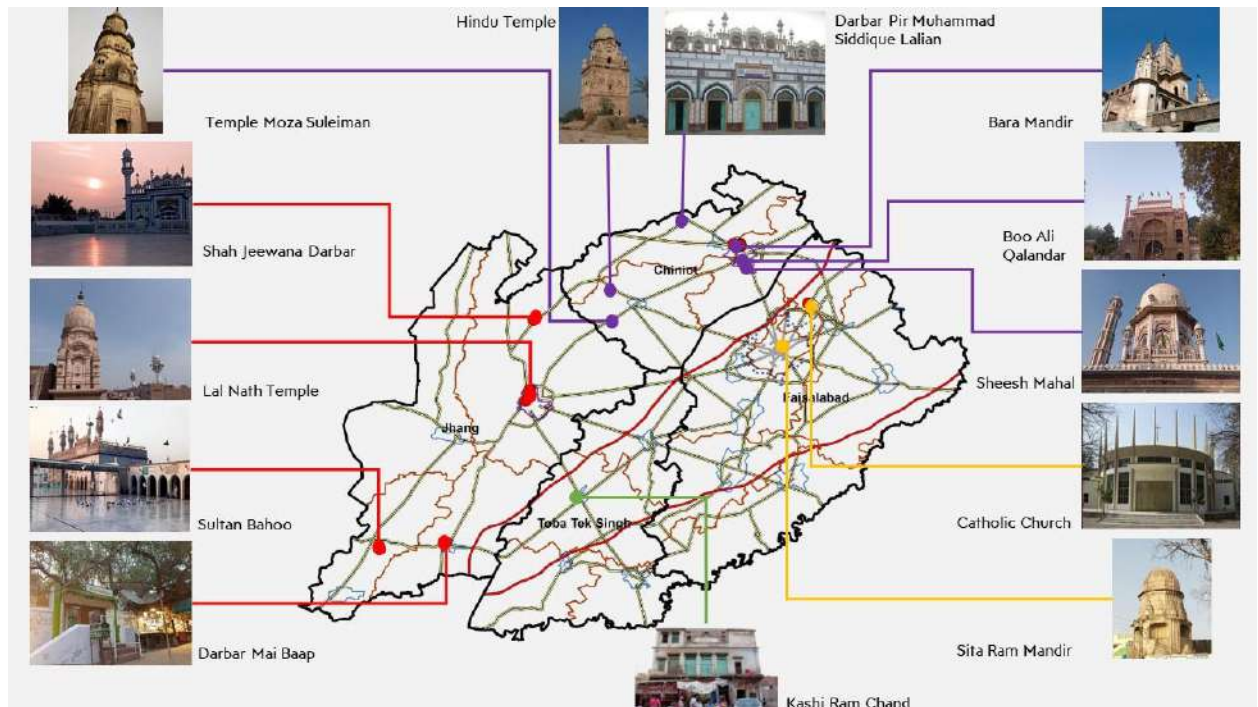
Many significant historical landmarks can be found in Faisalabad Division, including Omer Hayat, Mai Heer Tomb, Sheesh Mahal, Clock Tower, Shahi Masjid, and many others. Several Hindu temples are also deserted, including Temple Chak Jumra, Lal Nath Temple, Kashi Ram Chand Temple, Gurdwara Singhs BHA Gojra, and others. The region's heritage sites face numerous challenges, including inadequate information and marketing efforts since they are unknown to outsiders, deteriorating conditions, and a lack of conservation activities that put priceless historical artefacts at risk.



**Figure 22: Heritage Tourist Sites in Faisalabad Division**

Source: The Urban Unit

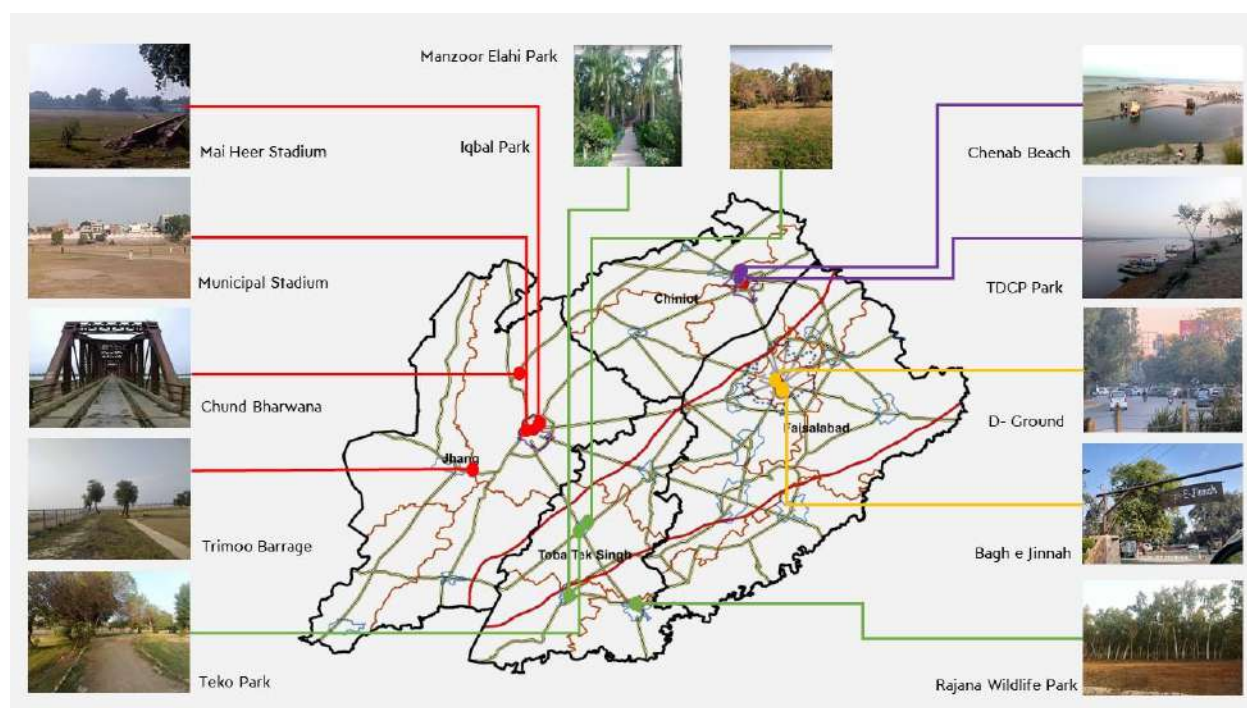
Faisalabad Division is also rich in terms of spiritual tourism – the most important perhaps is the shrine of Sultan Baho, where the Urs of the Saint is held every year and is an important local attraction. Indeed, the region also features several shrines and Masjids: Shah Jeewana Darbar, Darbar Mai Baap, Darbar Pir Muhammad Siddique Lalian, Boo Ali Qalandar, Shahi Masjid Sheesh Mahal and others. There are also several abandoned Hindu temples and religious sites including Lal Nath Temple, Kashi Ram Chand Temple, Gurdwara Singhs, among others. The major challenge for religious sites in the region is the lack of information and marketing, as these sites are not known to outsiders. Furthermore, Hindu, and Sikh religious sites are in disrepair as their local community is no longer present to preserve those sites.



**Figure 23: Religious Sites in Faisalabad Division**

Source: The Urban Unit

Recreational sites, such as parks, museums and stadiums, have developed mostly in urban cities as these locations would be able to attract a larger number of the local population in order to justify such investment. In the Faisalabad division, these locations include Mai Heer Stadium, Trimmu Barrage, Teko Park, Bagh e Jinnah, D-ground, Rajana Wildlife Park, TDCP Park, and others. Overall, these recreational areas might be improved, however they now lack certain amenities to facilitate the tourism experience, such as well-maintained seating spaces, public toilets, adequate signage etc.



**Figure 24: Ecotourism & Recreational Sites in Faisalabad Division**

Source: The Urban Unit

### 4.3. Tourism Influx in Faisalabad Division

Overall, there are very few sites in the Faisalabad Division that attract more than a 0.5 Million tourists annually; the majority of sites have a visitor influx of less than 1million annual tourists. The following data has been obtained from Punjab Tourism for Economic Growth Final Report, Consortium for Development Policy Research, 2018<sup>1</sup>; hence, the data presents a one-time picture of selected sites. Since consolidated data collection is missing, the district administrations should initiate collection of data annually and maintenance of visitor logbooks and feedback forms, to help make informed policy decisions.

**Table 2: List of Destinations Attracting More 0.5-1 Million Visitors Annually**

District	Tehsil	Tourism Site	Tourism Category
----------	--------	--------------	------------------

<sup>1</sup> World Travel and Tourism Council, 2019 & 2020 Country Economic Impact can be accessed at <https://wtcc.org/Research/Economic-Impact>

<b>Faisalabad</b>	Faisalabad City	Faisalabad Clock Tower	Historical Tourism, Cultural Tourism
	Chak Jhumra	Temple Chak Jumra (Catholic Church)	Religious Tourism
	Faisalabad	Lyallpur Museum	Historical Tourism, Cultural Tourism
	Faisalabad city	Jinnah Park	Recreational Tourism
<b>Jhang</b>	Jhang	Maai Challan Wali Sarkar	Religious Tourism
	Jhang	Lal Nath Temple	Religious Tourism
	Shorkot	Maai Baap Darbar	Religious Tourism
	Jhang	Darbar Sultan Hathivan	Religious Tourism
	Jhang	Mai Heer Shrine	Historical Tourism, Cultural Tourism, Religious Tourism
	Jhang	Shah Jewna Darbar	Religious Tourism
	Ahmad Pur Sial	Darbar Hazrat Sultan Bahu	Religious Tourism
<b>Toba Tek Singh</b>	Gojra	Kashi Ram Chand Temple	Religious Tourism
	Gojra	Gurdwara Singhs BHA Gojra	Religious Tourism
	Kamalia	Parnami Mandir	Religious Tourism
<b>Chiniot</b>	Chiniot	Umar Hayat Palace or Gulzar Manzil	Historical Tourism, Cultural Tourism
	Chiniot	Badshahi Mosque	Historical Tourism, Religious Tourism
	Laliyan	Darbar Pir Muhammad Siddique Lalian	Religious Tourism
	Chiniot	Darbar Hazrat Bu Ali Qalandir	Religious Tourism

Source: Punjab Tourism for Economic Growth Final Report Consortium for Development Policy Research (2018)

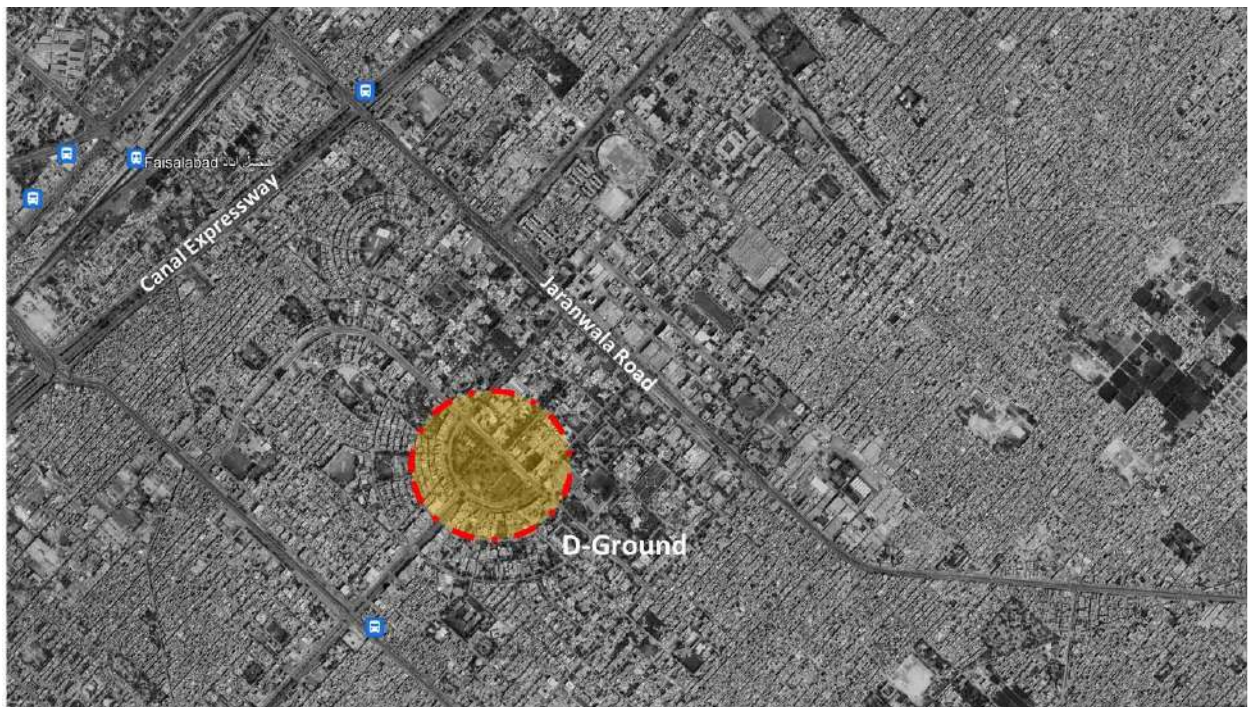
## SECTION 5: PROPOSED SITE-SPECIFIC INTERVENTIONS

### 5.1. Faisalabad District

#### 5.1.1 D- Ground

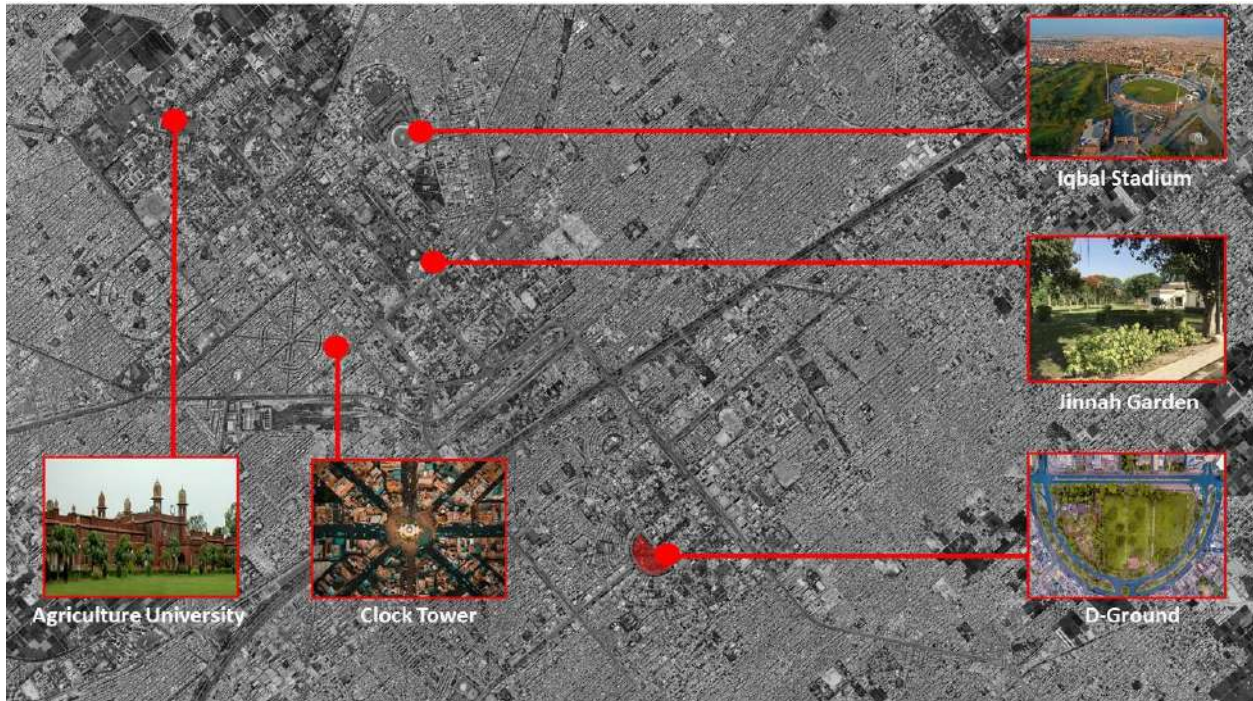
##### a. Existing Condition of D-Ground

D Ground is the main commercial area in Faisalabad. It is hub of the contemporary fashion and cuisine industry in Faisalabad. D-Ground is divided in two halves. One half is occupied by the Radio Pakistan Faisalabad Station, whereas the other half is a green public area. The location map of D-Ground is shown below:



**Map 2: Location Map of D-Ground, Faisalabad**

D-Ground is a public space that provides different varieties of food outlets of all sorts catering to the needs of the local public. A series of active food restaurants and cafes are currently operating at the market. The demand for food outlets is growing, as the city is developing and urbanizing rapidly, requires a planned zone for these economic activities.



**Map 3: Important Landmarks near D-Ground, Faisalabad**

Source: The Urban Unit

The site experiences a large amount of vehicular traffic alongside the shops, which makes it difficult to roam around the food streets, especially at night when the main road is inundated with a large number of cars. Moreover, the presence of a green space alongside this market needs to be revitalized and designed to accommodate the pedestrians walking by, providing them with ample shaded areas to sit and enjoy the landscape and then get something to eat. Right now, the park is not very well maintained with inadequate fencing or boundaries, broken sewerage manholes and lack of sitting/shaded areas.



**Figure 25: View of D-Ground, Faisalabad**



**Figure 26: Food points at D-Ground, Faisalabad**

Source: The Urban Unit

**b. Proposal for Upgradation and Revitalization of D ground**

Under this proposal, an adequately regulated parking place is to be allocated around the main ‘D’ of the ground, to accommodate the influx of people to park their cars in a secure manner. The main ground has to be designed and landscaped properly to create a space for rejuvenation of local public with ample amount of sitting area and sitting spaces provided with temporary shaded roof structures. The upgraded landscape will add to the experience of the market, providing opportunity for local food sellers to improve the attractiveness of their outlets as

well. Reference images for the proposed food points, shaded area and other amenities are shown below:



**Map 4: Upgradation and Revitalization Proposal site at D-Ground, Faisalabad**



**Figure 27: Layout of Upgradation and Revitalization proposal for D-Ground**



**Figure 28: Conceptual render of Upgradation and Revitalization proposal for D-Ground**



**Figure 29: Kiosks for local food sellers shading**



**Figure 30: Proposed Temporary shading**

**Way Forward:**

- Defining parking areas for cars
- Upgrading the green spaces available
- Modular kiosks and carts to harmonize the local food vendors

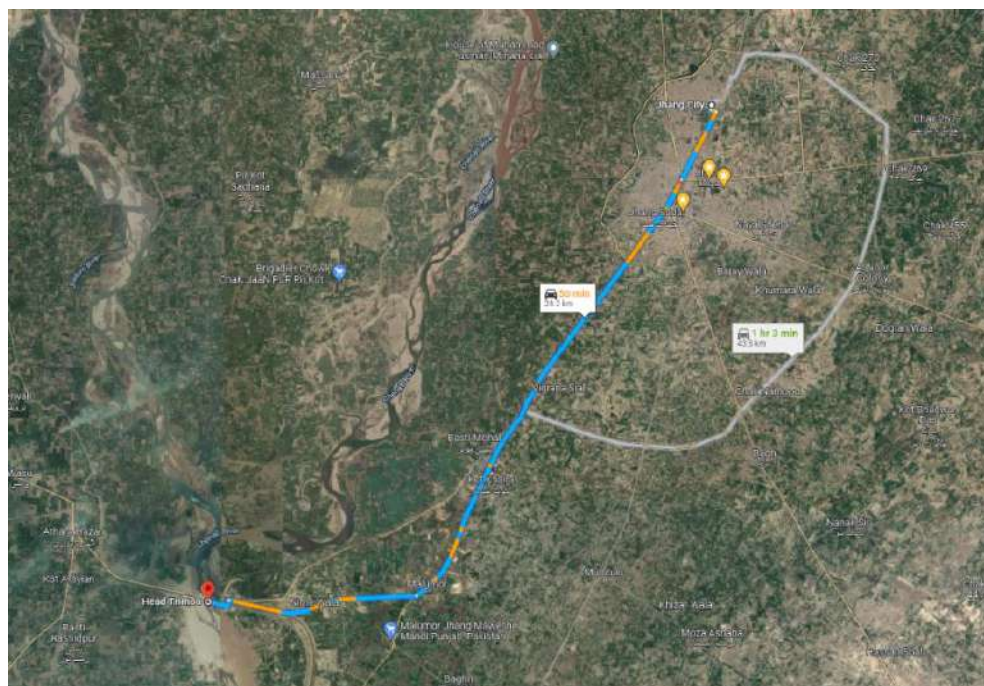
- Pavements and footpaths to be adequately designed and developed
- Proper waste disposal system and garbage collection bins to be provided
- Provision of adequate street lighting and street furniture to revitalize the public space
- Improve quality of existing spaces
- Ensure usable street furniture such as benches
- Remove the encroachments made by commercial activities during daytime in the city center along the transportation network, particularly from the footpaths and road shoulders
- Improve overall road marking including pedestrian crossing signs to ensure safety of pedestrians
- Improve the physical access through ramps and user-friendly design for the disabled and elderly population

## 5.2. Jhang District

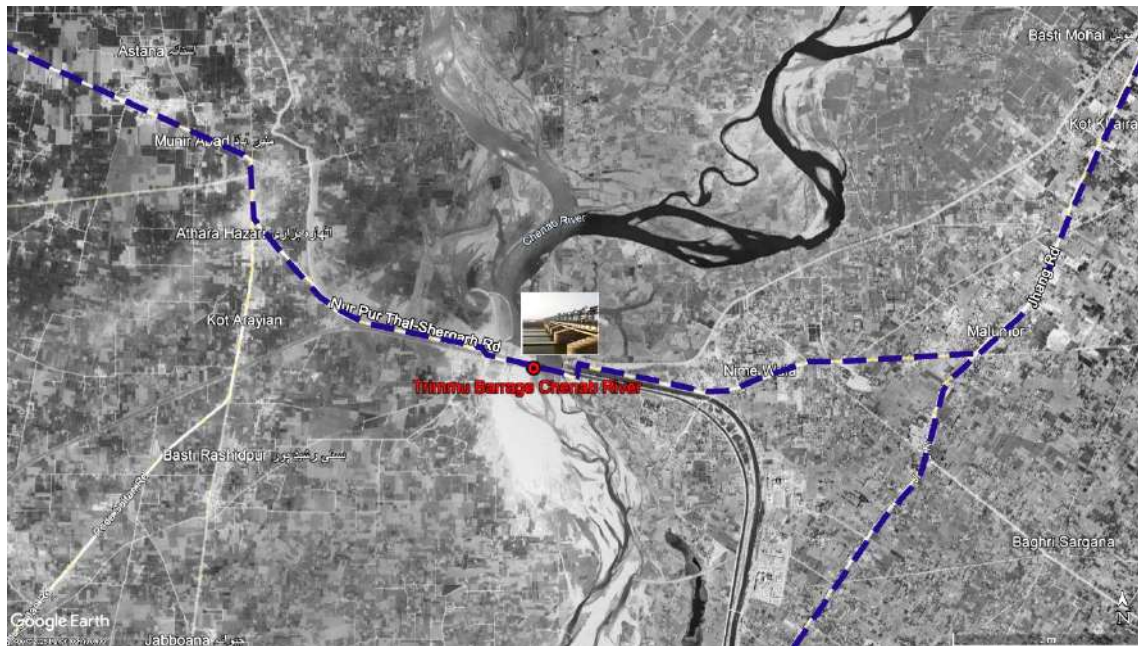
### 5.2.1. Trimmu Barrage

#### a. Existing Condition of Park near Trimmu Barrage, Chenab River

The site is located at a distance of approximately 28 kilometers from Jhang City via Jhang road and takes about 50 minutes to reach the site complex. The site connectivity map and location map are shown below:



**Map 5: Road Connectivity Map of Head Trimmu Barrage, Jhang**



**Map 6: Location Map of Head Trimmu Barrage, Jhang**

Source: The Urban Unit

The barrage was constructed between 1937 and 1939 by English engineers to protect the city of Jhang from floods primarily. It is being used to control water flow into the River Chenab for irrigation purposes.

The site is surrounded by a recreational park defined by a strict boundary with a few trees, gazebos and sitting benches. The park is quite deserted, but the grass is maintained in the entire park. The site lacks proper play area and food points for visitors. It lacks proper signage, and

lighting as well. Public toilets are nonfunctional. There is a lack of proper parking space available for vehicles.



**Figure 34: Trimmu Barrage, Jhang**



**Figure 33: Main Road at Trimmu Barrage** **Figure 32: Food Point at Trimmu Barrage**



**Figure 31: Existing Condition of the Park at Trimmu Barrage**

**b. Proposal of Upgradation and revitalization for park near Head Trimmu**

The park at Head Trimmu can be upgraded to facilitate the visitors in the following manner:

- Adequate lighting for security and enhancing the quality of the park
- Upgradation of landscaping and addition of trees and flowers/shrubs in the park to add to the beauty of the natural outlook of the space
- A convenience store for basic snacks etc. to facilitate the visitors coming by
- Upgradation of public toilets at the park
- Ease of access and adaptability compliance for disabled persons
- Small aviary to be added to the park to create attraction for the visitors
- Restaurants and other refreshment points to be added at the park





Restaurants



Play Area



Benches



Lighting

**Figure 35: Reference images for Proposed Amenities for Park at Trimmu Barrage**

Source: The Urban Unit

### 5.2.2. Mai Heer Tomb

#### a. Existing Condition of Mai Heer Tomb

The tomb lies approximately 4.5 kilometers from the city of Jhang, crossing the railway line at the end of Mai Heer road, surrounded by graveyard also known as ‘Mai Heer Kabristan’. The road Connectivity map of the site is shown below:



**Map 7: Road Connectivity Map of Mai Heer Tomb, Jhang**

Source: The Urban Unit



**Map 8: Location Map of Mai Heer Tomb, Jhang**

Source: The Urban Unit

Some major landmarks near Mai Heer Tomb such as Municipal Stadium, Mai Heer Stadium are shown in the below figure:



**Figure 36: Landmarks near Mai Heer Tomb**

There is a regular upkeep of the site and its adjoining area. The tomb is well maintained with a properly paved courtyard. The tomb structure however has been painted in a typical manner as if it were a commercial building. The entrance to the tomb site is a little narrow and a little steep. It has lack of signages for direction. The access is encroached by small shops on both sides of the leading entryway. Moreover, there is no proper parking space for parking vehicles that causes trouble when there are a lot of visitors. The site is secured by metal barbed wire fencing that disrupts the beauty of the small complex. The interior/exterior of the tomb is painted insensitively without adhering to the necessary heritage protection guidelines.



**Figure 37: Encroachments on Entrance roadway to Heer's Tomb**

Source: The Urban Unit



**Figure 39: Tomb of Heer**



**Figure 38: Court area beside the Tomb**

Source: The Urban Unit



**Figure 40: Interior view of the tomb**

Source: The Urban Unit

### **b. Upgradation and Restoration proposal for Mai Heer tomb**

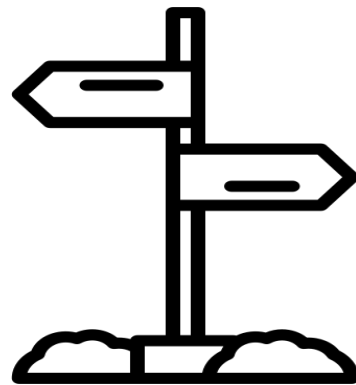
As part of upgradation plan at the tomb and its surrounding area, following measures should be taken:

- Parking area outside the tomb
- Ease of access and pavements to be provided at the entrance
- Proper structures for small shops to be developed outside the main entrance
- Garbage bins and waste collection system to be developed and provided at the site

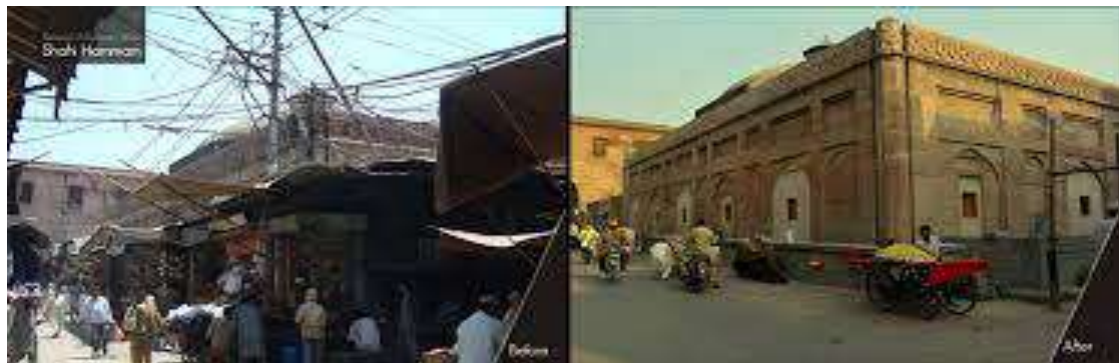
- Street lighting and street furniture to be provided
- Landscaping and green areas to be developed at the site and its surroundings
- Signages to be provided along the main roads that lead to the tomb
- Adequate lighting arrangements to be made at the site
- Public toilets to be provided and upgraded on the site



Ease of access and pavements



Signages



Removal of Encroachment: Before and After

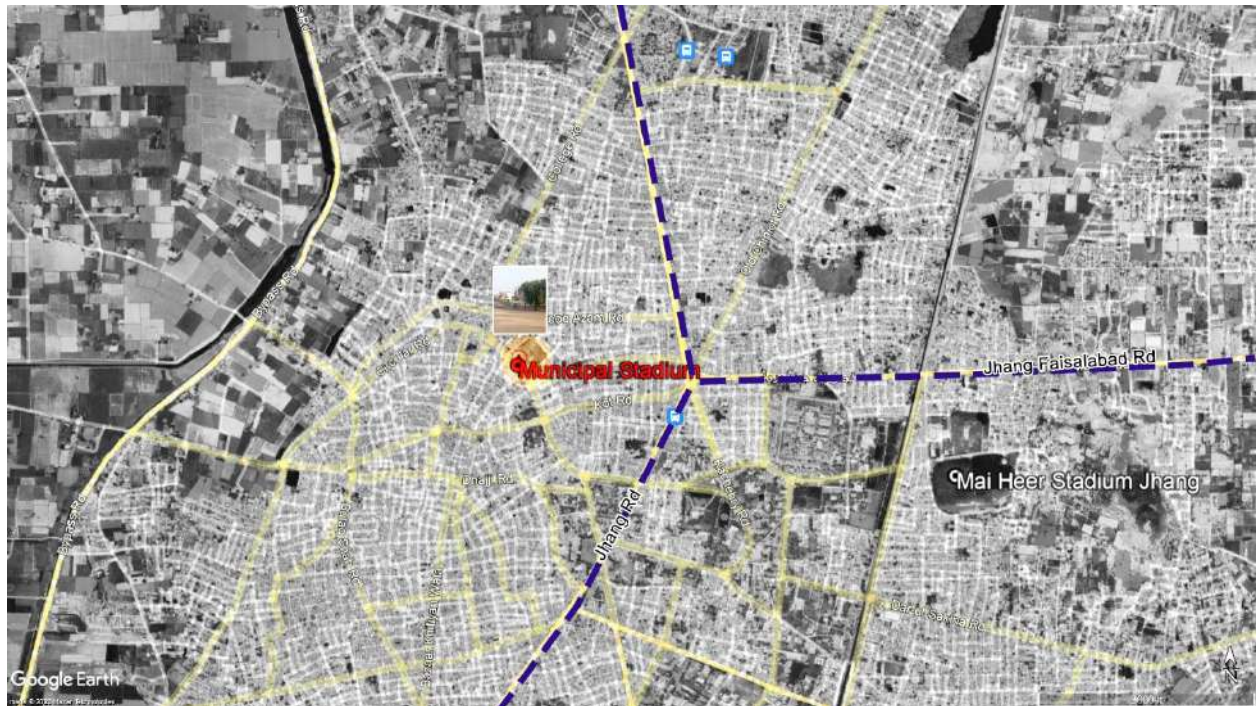
**Figure 41: Reference Images for upgradation measures at Mai Heer Tomb, Jhang**

Source: The Urban Unit

### 5.2.3. Municipal Stadium, Jhang

#### a. Existing Condition of Municipal Stadium

Municipal stadium is located in Jhang Saddar area and is accessible via Jhang road, as shown in the map below:



**Map 9: Location Map of Municipal Stadium, Jhang**

The existing condition of the stadium is below par, with poorly maintained ground and no cleanliness. The entrance of the stadium is occupied by large garbage dumps and their smell. The seating area of the stadium is not well maintained and is covered with dust. There is no adaptability access for disabled persons. There is no allocation of a parking facility for the stadium.



**Figure 42: Ground of Municipal Stadium**

Source: The Urban Unit



**Figure 43: Interior side of the entryway**



**Figure 44: Entrance of the stadium**

Source: The Urban Unit

#### **b. Proposal of Upgradation and Revitalization for Municipal Stadium, Jhang**

The following steps needs to be taken for the uplifting of the stadium discussed below:

- The stadium needs an overall upgradation in terms of landscape, and proper grass for the ground
- A parking facility needs to be provided at the site for the players as well as the spectators
- Provision of food points or smaller kiosks for local food sellers etc.
- The covered pavilion area needs to be upgraded
- Adequate lighting arrangements for night sports events
- Public toilets to be provided on the site



**Figure 45: Upgradation of seating pavilion** **Figure 46: Lighting for nighttime sports events**



**Figure 47: Parking facility**

Source: The Urban Unit

### 5.2.4. Mai Heer Stadium

#### a. Existing Condition of Mai Heer Stadium

Mai Heer Stadium Jhang is situated nearby to the Mai heer Sports Complex and the tomb of Mai Heer.



**Map 10: Location of Mai Heer Stadium, Jhang**

The existing site is under construction. It has lack of public amenities. There is a lack of proper landscaping at the stadium. There is inadequate lighting and seating arrangements for this large stadium. There is no parking facility for the stadium. There is a lack of signage and lighting arrangement to facilitate the spectators.





**Figure 48: Lack of maintenance at the Mai Heer Stadium, Jhang**

Source: The Urban Unit

**b. Proposal for upgradation and revitalization for Mai Heer Stadium**

The upgradation of the stadium should include the following measures;

- The stadium needs an overall upgradation in terms of landscape, proper grass for the ground
- A parking facility needs to be provided at the site for the players as well as the spectators
- Provision of food points or smaller kiosks for local food sellers etc.
- The covered pavilion area needs to be upgraded
- Adequate lighting arrangements for night sports events
- Public toilets to be provided on the site



**Figure 50: Stadium facility designed with adequate lighting and seating arrangements**



**Figure 49: Proposed Public restrooms**

Source: The Urban Unit



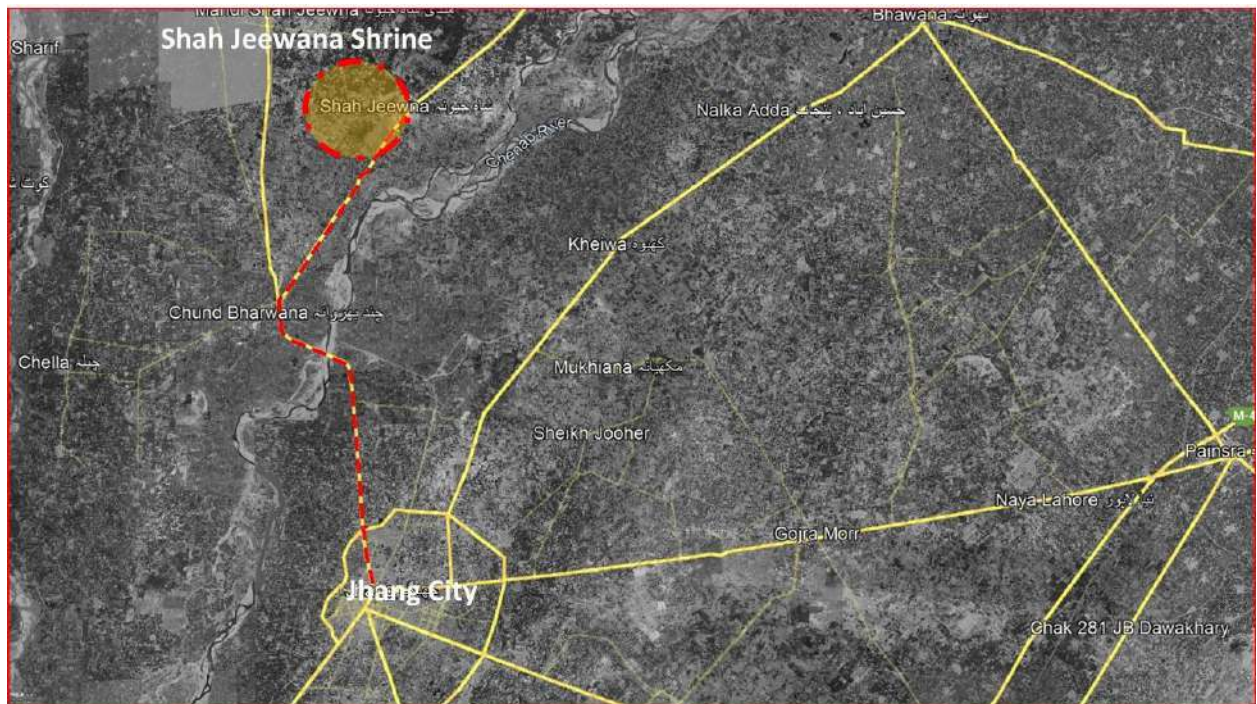
**Figure 51: Parking facility at the stadium**

Source: The Urban Unit

### 5.2.5. Shah Jeewana Shrine

#### a. Existing Condition of Shah Jeewana Shrine

The shrine is located at a distance of 32 kilometers from Jhang city via Sargodha-Jhang-Multan road through Chund Bharwana Bridge over at Chenab river, that takes approximately 1 hour to reach the site due to poor road conditions at Jhang-Shah Jewana-Laliyan road section leading to the shrine.

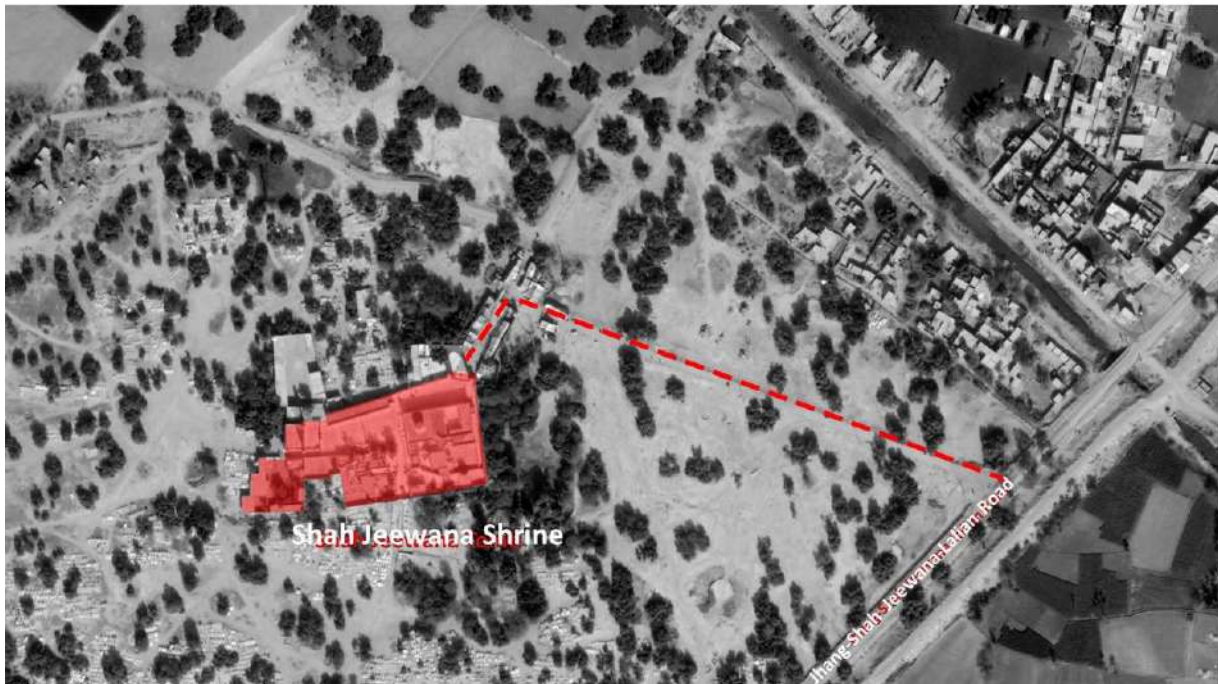


**Map 11: Connectivity map of Shah Jeewana shrine, Jhang**

Source: The Urban Unit

Shah Jewna, also known as Pir Shah Jewna Al-Naqvi Al-Bukhari was a 16th century great saint. Jewna was a Sayyid from the Naqvi denomination. Pir Shah Jewna died in the year 971 A.H. (1569 A.D.). The shrine is well kept and maintained from the interior including the courtyard space, a mosque as well as the langar khana. The site is mostly filled with devotees expressing their respect to the saint offering visits and sending prayers. A lot of rituals are performed at the shrine because of the significance of the Saint.

However, the access to the shrine is not very well defined. It lacks a proper parking space and normally the devotees who come to pay homage to the Saint park their vehicles off street. There is a lack of pavements for the visitors right at the entrance of the shrine complex. Similarly, small shops right outside the main gateway lack proper structures and are in a dilapidated condition. There is no shelter or shaded area outside at the entrance, to protect from extreme weather conditions such as heat or rain etc. There is a lack of sitting space as well.



**Map 12: Location Map of Shah Jeewana Shrine, Jhang**

Source: The Urban Unit



**Figure 53: Interior court at the shrine**



**Figure 52: Entrance gateway to Shah Jeewana Shrine**



**Figure 54: Courtyard of shrine**



**Figure 55: Existing condition at the entrance**

Source: The Urban Unit

### **b. Proposal for upgradation and revitalization for Shah Jeewana Shrine**

As part of upgradation plan at the Shrine and its surrounding area, following measures should be taken;

- Parking area outside the shrine
- Ease of access and pavements to be provided at the entrance
- Proper structures for small shops to be developed outside the main entrance
- Garbage bins and waste collection system to be developed and provided at the site

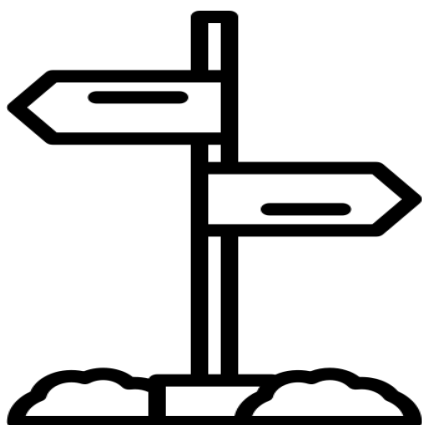
- Street lighting and street furniture to be provided
- Landscaping and green areas to be developed at the site and its surroundings
- Signages to be provided along the main roads that lead to the shrine
- Adequate lighting arrangements to be made at the site
- Langar khana at the site has toilets right next to where the food is distributed generally, condition of toilets needs to be improved, more public toilets needs to be provided at the shrine complex.



**Figure 56: Kiosks for small shops**



**Figure 57: Public amenities**



Signage



Lighting

**Figure 58: Reference Images for upgradation measures at Shah Jeewana Shrine, Jhang**

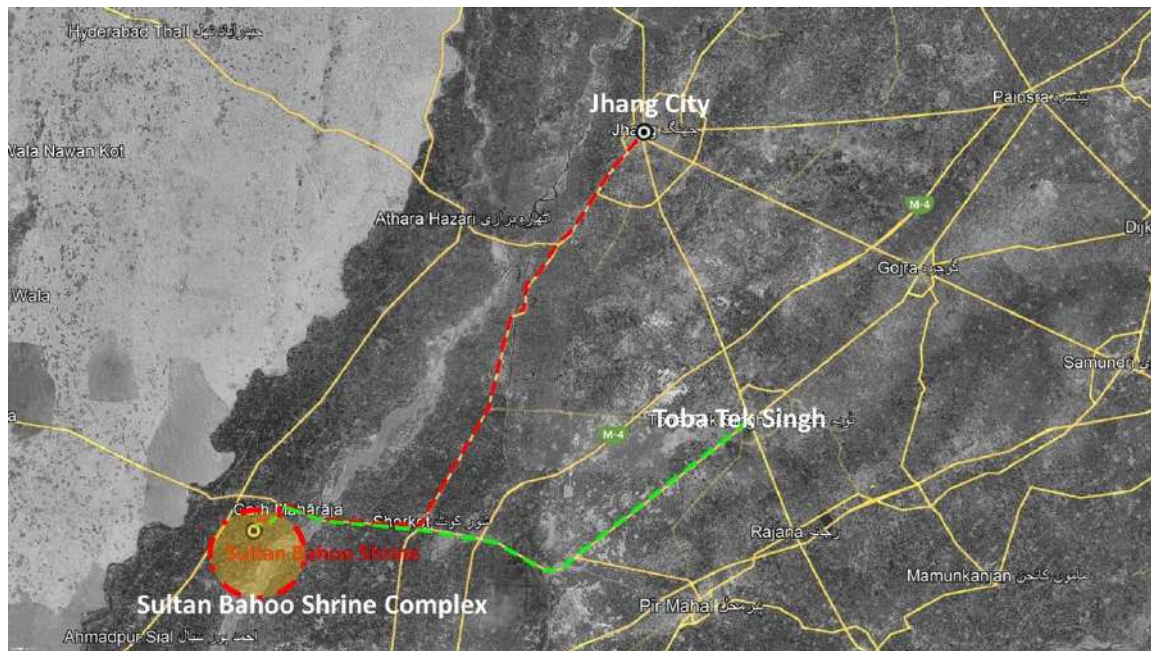
Source: The Urban Unit

### 5.3. Toba Tek Singh District

#### 5.3.1. Sultan Bahoo Shrine

##### a. Existing Condition of Shrine

Sultan Bahu (17 January 1630 – 1 March 1691), was a 17th-century Punjabi Sufi mystic, poet, scholar and historian. He was active in the Punjab region (present-day Pakistan) during the reigns of Mughal emperors Shah Jahan and Aurangzeb. The shrine complex is located a distance of approximately 97 kilometers from the city of Jhang, that takes almost one and a half hour to reach the site through M4 and then Shorkot Cantt road.



**Map 13: Road Connectivity Map of Sultan Bahoo Shrine, Toba Tek Singh**

Source: The Urban Unit



**Map 14: Location map of Sultan Bahoo Shrine, Toba Tek Singh**

Source: The Urban Unit

The shrine complex is very well kept and maintained and includes a large court to accommodate the devotees and a fairly large mosque for setting out prayers etc. The overall

site is in a good condition, the only thing that is missing at the site is the lack of a proper parking facility, fairly less developed and maintained entry area, unpaved entrance and absence of proper lighting and sitting areas as well as shaded spaces outside the shrine complex at the main entrance.



**Figure 59: Entrance at Sultan Bahoo Shrine complex**



**Figure 60: Existing conditions outside the shrine**



**Figure 61: Interior view of Sultan Bahoo complex**



**Figure 62: Devotees gathered inside the complex**



**Figure 64: Chiragah Place at Sultan Bahoo Shrine**

Source: The Urban Unit

**b. Proposal of Revitalization for Sultan Bahoo Shrine**

As part of upgradation plan at the shrine and its surrounding area, following measures should be taken;

- Paved parking area outside the complex
- Ease of access and pavements to be provided at the entrance
- Proper structures for small shops to be developed outside the main entrance
- Garbage bins and waste collection system to be developed and provided at the site
- Street lighting and street furniture to be provided
- Landscaping and green areas to be developed at the site and its surroundings
- Signages to be provided along the main roads that lead to the tomb
- Public toilets to be provided and upgraded on the site



**Figure 65: Proposed green spaces surrounding the Shrine Complex**

Source: The Urban Unit



**Figure 66: Paved parking area**

Source: The Urban Unit



**Figure 67: Structures for small shops**

Source: The Urban Unit

### 5.3.2. Teko Park

#### a. Existing Condition of Teko Park

The park is located within Toba Tek Singh quite close to the railway line passing through the city. The park lacks a properly defined boundary on each side.



**Map 15: Landmarks near Teko Park, Toba Tek Singh**

Source: The Urban Unit

The entrance to the park with the adjoining main road is devoid of any parking space and fencing that defines entrance to the park. A lot of stray dogs roam around and inhabit the park currently. Similarly, on the other side of the park, railway line is in close proximity without any barrier or fence which is very dangerous. Moreover, the park lacks maintenance and cleanliness. Pathways in the park are not paved that decreases accessibility within the park. There is no proper allocated space for children and their activities.



**Figure 68: No parking facility for the visitors of park**



**Figure 69: Unpaved and poorly maintained park**



**Figure 70: Sitting Area of Park**



**Figure 71: Green Spaces in the Park**

### **b. Proposal of Redevelopment/ Upgradation proposal for Teko Park**

Upgradation plan of the park involves the following aspects:

- Provision of a parking facility for the visitors
- Improved boundaries and fencing around the park
- Paved pathways to enhance accessibility
- Kids play area activities to increase attraction for the local residents
- Adequate lighting, seating benches and sitting areas with shading structures
- Provision of food point
- Enhancement of the natural surroundings by improving and uplifting plantation in the park.

Conceptual images for the upgradation of Teko park is shown in below images:



Figure 72: Conceptual design of upgradation of Teko park, Toba Tek Singh

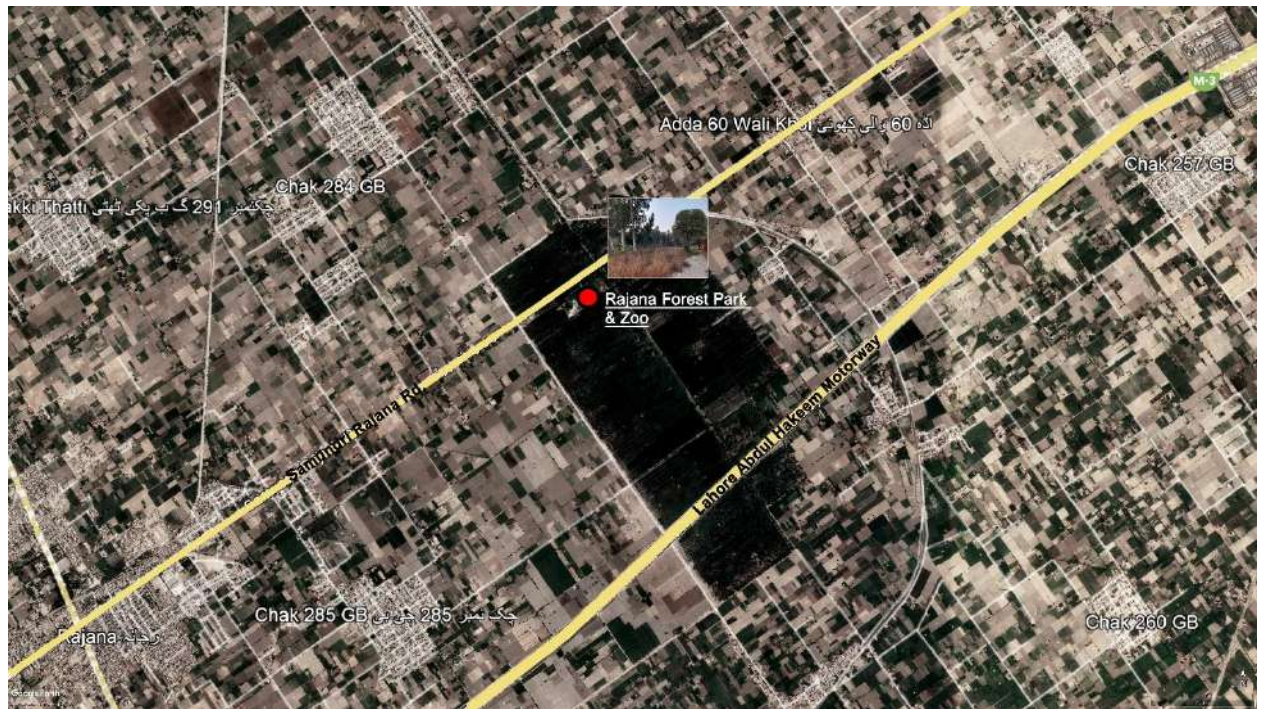
### 5.3.3. Rajana Forest Bhagat Wildlife Park

#### a. Existing Condition of Rajana Forest Bhagat Wildlife Park

Lighting

Benches

The wildlife park is located in the outskirts of T.T.Singh adjacent to M-3 Motorway and is accessible via Samundri Rajana road.



**Map 16: Location of Rajana Forest Bhagat Wildlife Park, Toba Tek Singh**

Source: The Urban Unit

Existing conditions of the park are quite poor as it lacks wildlife and its diversity. It only exhibits a scarce number of animals. There is no proper parking facility for the visitors and lacks public toilets. There is no refreshment point within the park. The overall park is not maintained and seems like a barren piece of land.



**Figure 73: Wild Life Park**



**Figure 74: Animals in the wildlife park**

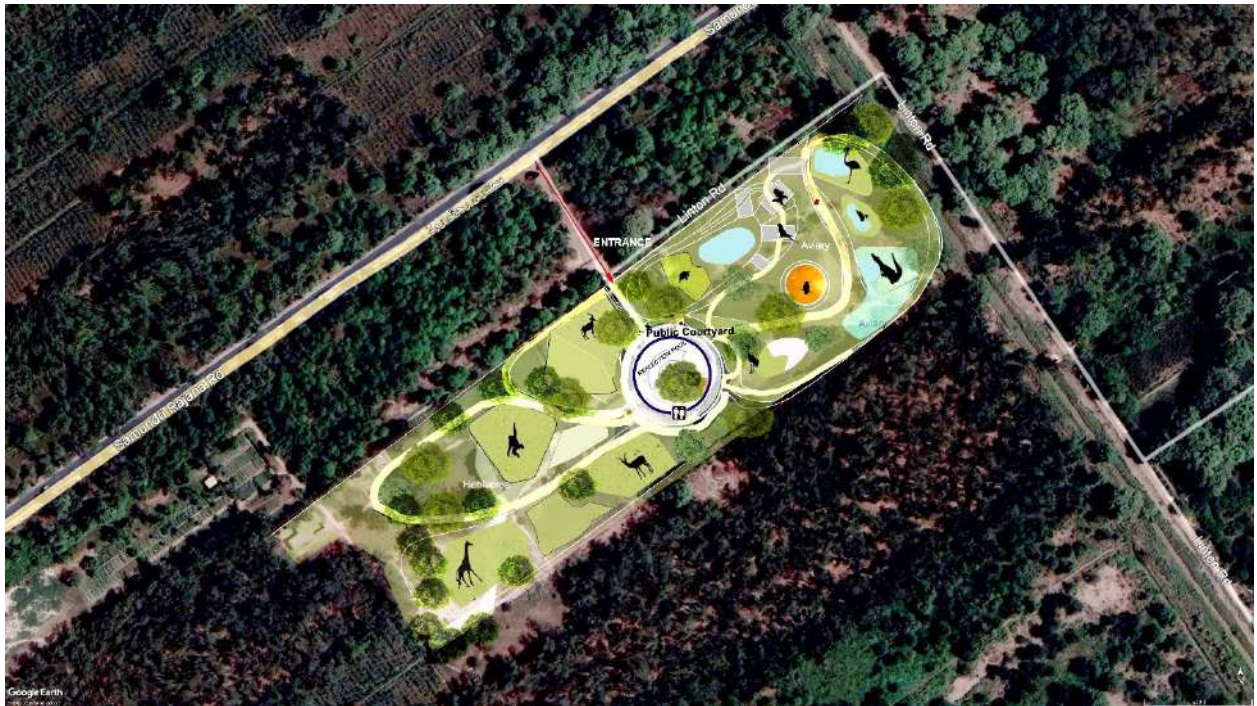
Source: The Urban Unit

### **b. Proposal for Upgradation of Rajana Forest Bhagat Wildlife Park**

Upgradation of the wildlife park includes the following measures:

- Adequate landscaping within the park
- Introducing different species of animals to promote and create attraction for the visitors
- Create and develop refreshment points within the park to facilitate the visitors
- Provision of public toilets
- Provision of an adequate parking facility
- Pavement and pathways to enhance ease of access
- Fencing around forest

Conceptual Image for the upgradation of park is shown below.



**Map 17: Layout Map of Upgradation Proposal for Rajana Forest Bhagat Wildlife Park**



Sitting Area



Food Point





Landscaping

**Figure 75: Design proposals for upgradation of wildlife park**

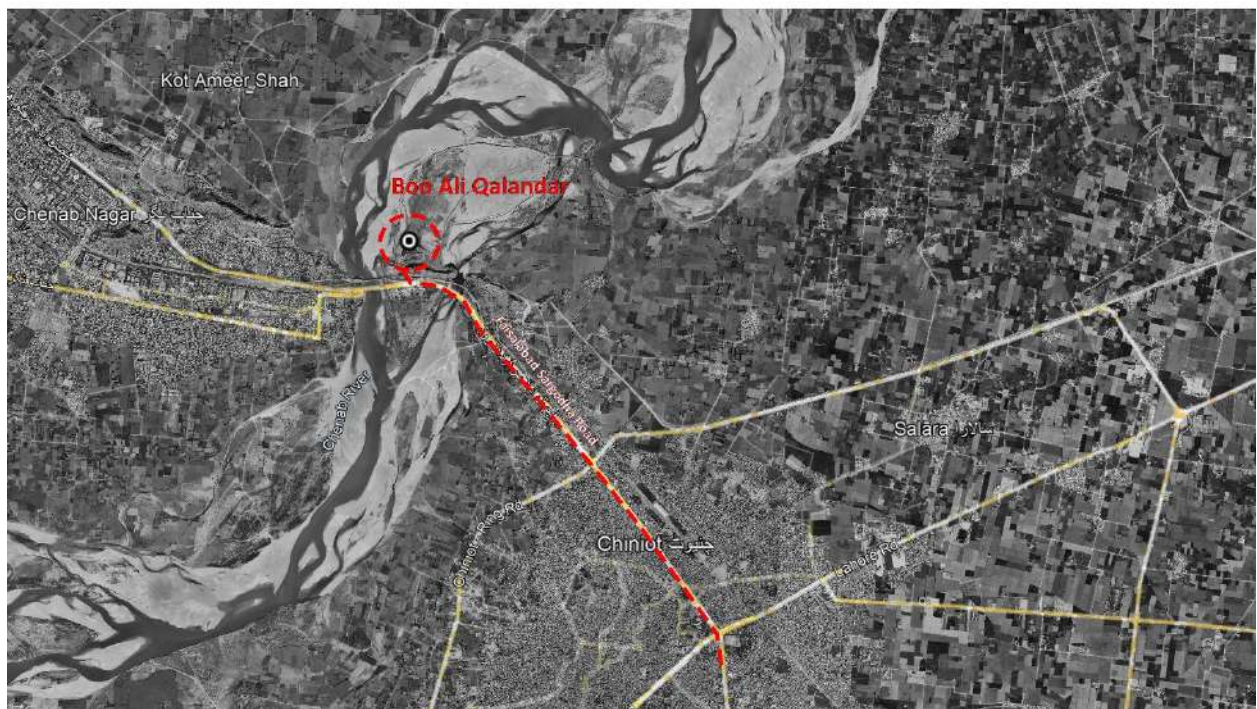
Source: The Urban Unit

## 5.4 Chiniot District

### 5.4.1. Boo Ali Qalandar Shrine

#### a. Existing Condition of Boo Ali Qalandar Shrine

The site is located within the periphery of Chiniot city. The site is originally a ‘*chillah gaah*’ of Boo Ali Qalandar.



**Map 18: Road Connectivity Map of Boo Ali Qalandar Shrine, Chiniot**

The complex comprises of a large entry gateway encompassing the main courtyard, a mosque and a place for langar. The complex is quite spacious and well maintained. However, few issues

on this religious site includes an inadequate parking area, poor temporary structures for local sellers and vendors etc., poorly maintained toilets for local public or visitors of the complex.



**Map 19: Location of Boo Ali Qalandar Shrine, Chinot**



**Figure 76: Entrance Gateway to the complex**



**Figure 77: Local sellers with temporary roof structures**

Source: The Urban Unit

### **b. Proposal of Revitalization for Boo Ali Qalandar Shrine**

The site is quite well maintained as seen in the existing pictures, with the potential to further augment the positive impact of the site complex. This can be done by taking a few measurable steps in order to improve, upgrade and enhance the site through

- An adequate, well designed parking space to be provided on the site with appropriate green/natural elements
- Steel structures or kiosks for the local sellers on the site
- Upgradation of the existing toilets and provision of new toilets in the complex
- Adequate street lighting to enhance security and combat safety concerns for the visitors coming to pay homage



**Figure 78: Parking facility with green belts**

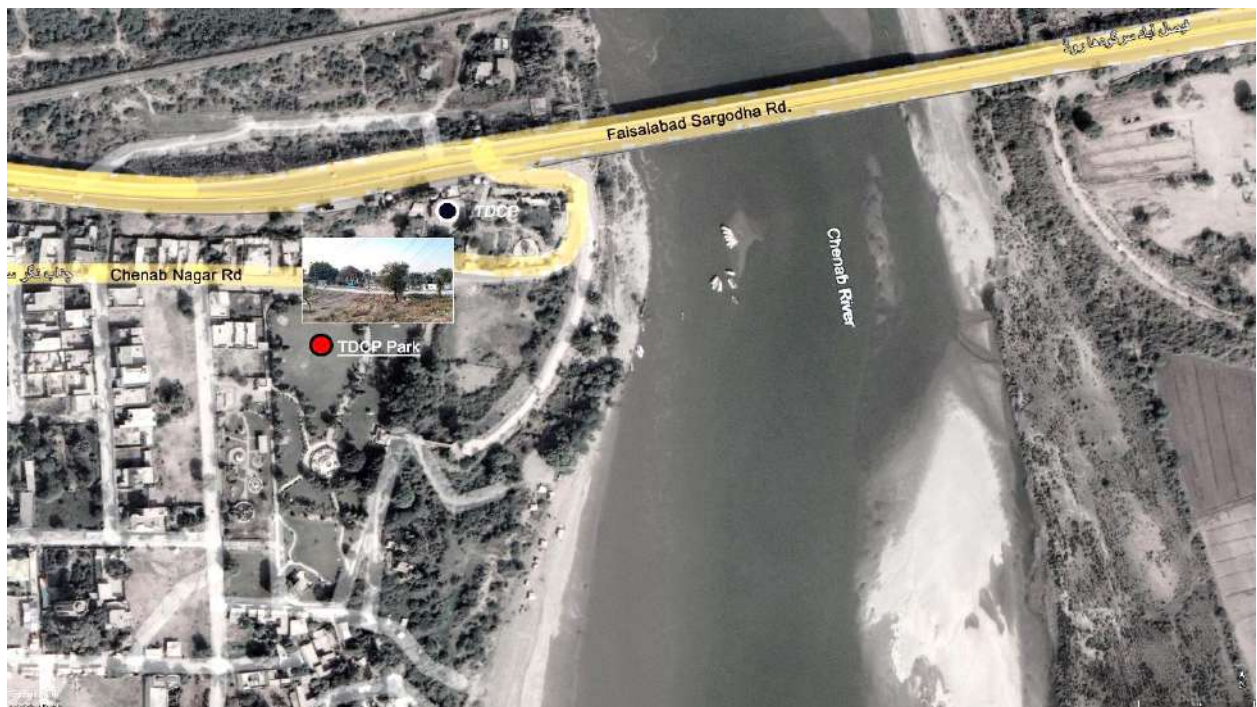
**Figure 79: Provision of public rest areas**

Source: The Urban Unit

### 5.4.2. TDCP Picnic Point

#### a. Existing Condition of TDCP Picnic Point

The site is located besides River Chenab, accessible via Faisalabad -Sargodha Road



**Map 20: Location of TDCP Park, Chiniot**

The site is characterized by few rides, a ship boat and a merry go round for the kids along with small refreshment points for the visitors. The surrounding of the park is poorly maintained. There is a sports facility attached to the park at the bank of River Chenab right beside the park, stepping down towards the riverside. The boating facility is somewhat redundant and is not actively operating.



**Figure 80: TDCP Park, Chiniot**



**Figure 81: Boating facility alongside the TDCP Park**

Source: The Urban Unit

### **b. Upgradation and Revitalization proposal for TDCP Picnic Point**

The park needs better landscaping overall. Other than that, the following measures need to be taken:

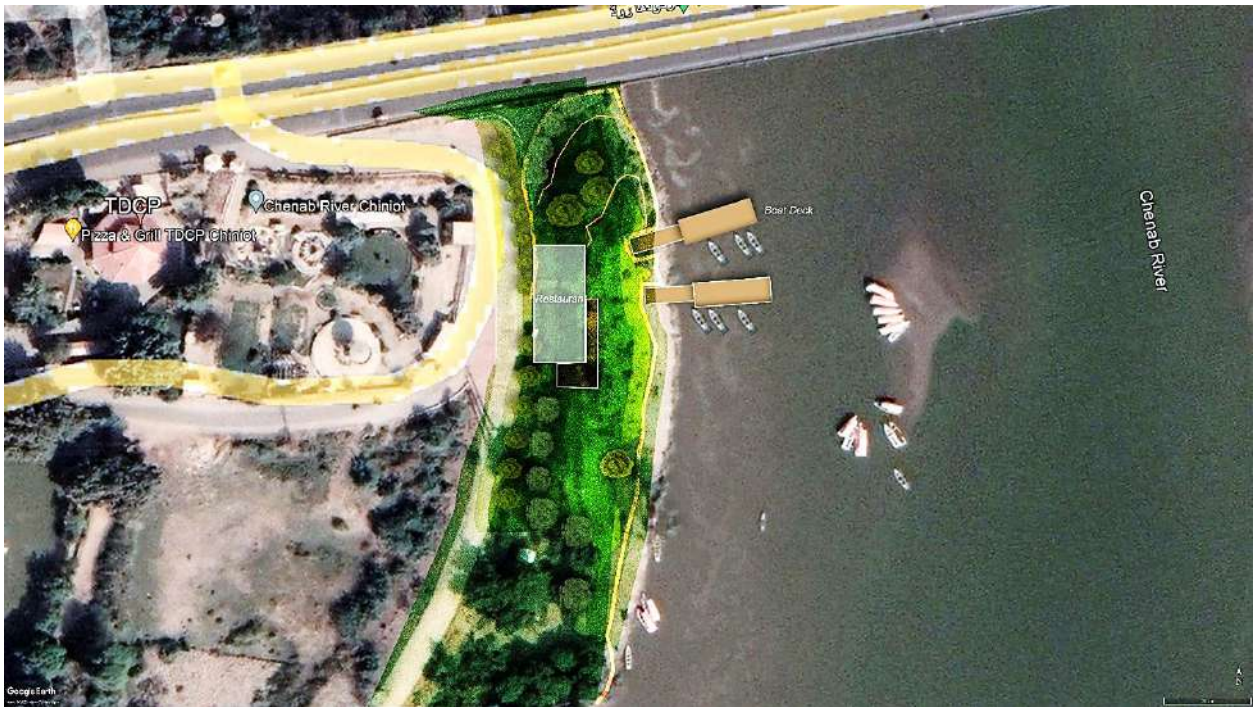
- The adjoining areas of River front need to be developed as tourist attraction spots by designing activities and shaded sitting areas to engage families and visitors.
- The boating facility needs to be upgraded
- Provision of adequate lighting, seating benches and pavements for enhanced accessibility

- Kids play area to be defined and allocated separately
- Picnic points to be developed near the boating area
- Signages on the site area to guide the visitors
- Landscaping of green areas
- Provision of restaurants at the riverfront to attract and engage the tourists as well as local population



**Map 21: River Front Rehabilitation Zone**

Source: The Urban Unit



**Map 22: Rehabilitation Proposal of River Front**

Source: The Urban Unit



**Figure 82: Play area for kids**



**Figure 83: Restaurants and sitting area**



**Figure 84: Boating Facility**

Source: The Urban Unit

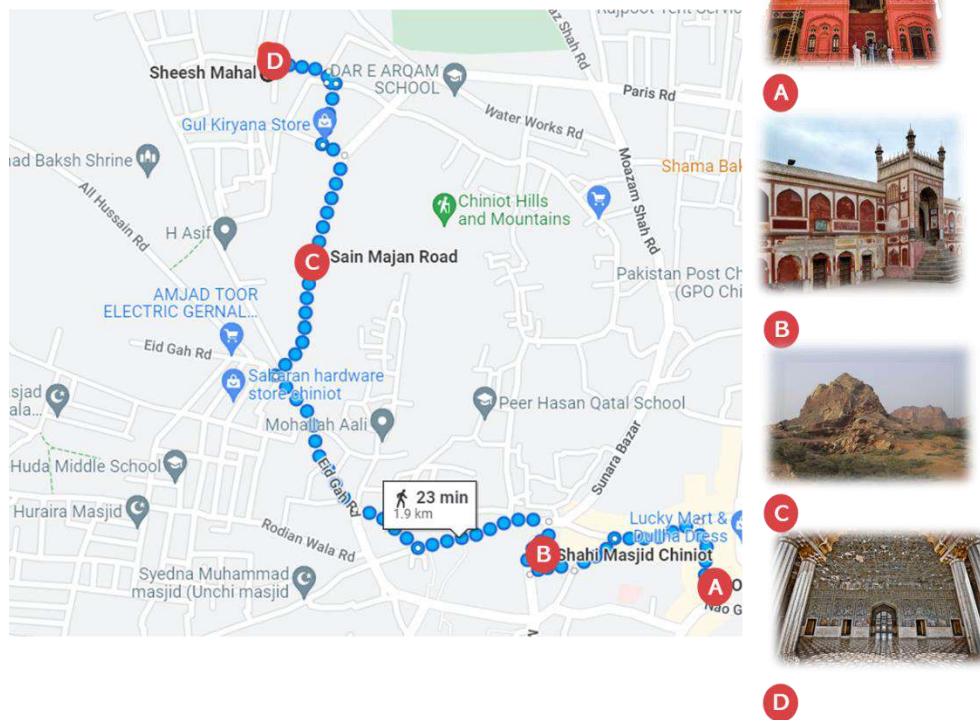
### **5.4.3. Heritage Trail from Shahi Masjid to Omer Hayat Mahal**

#### **Heritage Trail of Chiniot City**

The city of Chiniot is located in the Punjab province of Pakistan. The proposed heritage trail for Chiniot City would provide a unique and immersive experience for visitors, showcasing the city's rich cultural and historical roots and offering a glimpse into its traditional way of life. It is a bustling city with a long and rich history. Chiniot is home to a number of historical monuments and buildings, some of which are quite significant. These are the famous; Omar Hayat Mahal, Shahi masjid and Sheesh Mahal. Despite these amazing sites, the city is sadly lacking a heritage trail that guides visitors through the city's history and culture. A heritage trail can be an important way to promote tourism and encourage engagement with local history. It can also play an important role in making the city more inclusive and accessible to all.

#### **Distance of the Heritage Trail**

The total walking distance of the heritage trail is 2.4 km and it will take around 30 minutes for the visitors to experience the whole journey.

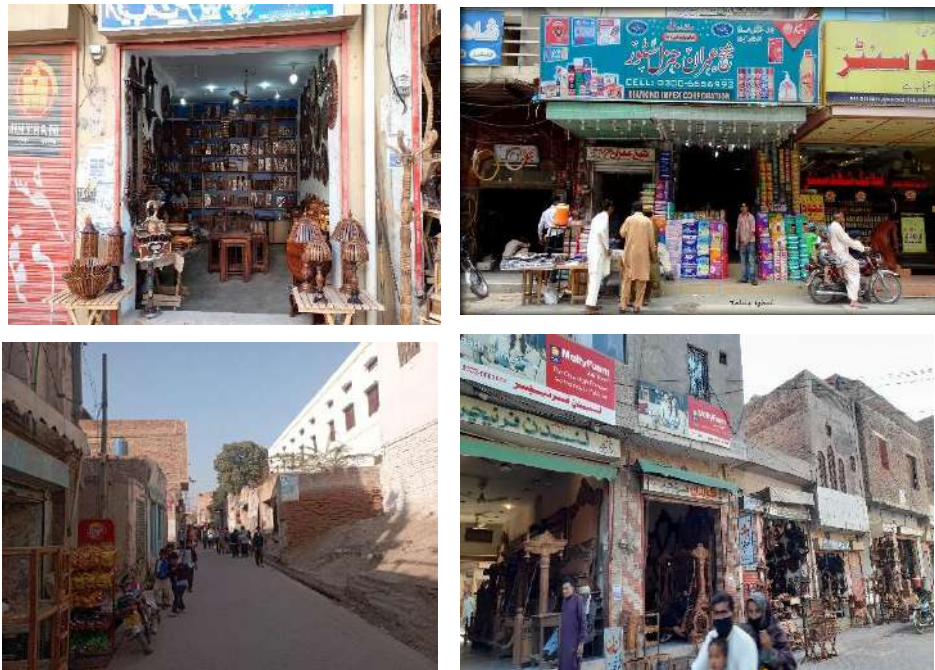


**Figure 85: Heritage Trail of Chiniot City**

**Significance of heritage trail**

- The trail would begin from the Alamgir Road towards the Nao Gaza Road where the visitors will reach at the Omar Hayat Mahal, a stunning structure built in the 20th century by the wealthy businessman named Omar. Visitors can explore the Mahal’s intricately carved walls and gates, as well as its beautifully decorated rooms and marvelous intricate wooden carvings and marble work that adorn the walls and ceilings. The Omar Hayat Mahal is also home to a large collection of antique furniture, weapons, and other historical artifacts. These items are displayed in the various rooms of the Mahal, providing visitors with an insight into the history and culture of the region.
- The trail will lead the tourists towards the second heritage site, Shahi Masjid. It is a three-domed structure built by Nawab Sa’adullah Khan. It was built in 16th century, it is famous for its exquisite architecture and beautifully decorated interiors. It is also home to an impressive collection of sculptures and works of art which have been preserved over the centuries and now form a centerpiece of the main prayer hall. The

interior of this mosque is beautifully decorated and adorned with exquisite marble work and stained-glass art. There are also several beautiful inscriptions carved on the walls that detail the history of the mosque as well as some interesting information about the construction of this iconic building.



**Figure 86: Chinni Bazar**

- Next, the trail would take visitors to the Chiniot Bazaar, a bustling marketplace filled with colorful stalls selling traditional handicrafts such as carved wood furniture and intricate gold and silver jewelry.
- Other highlights on the trail would include the Chiniot Bazaar, known for its vibrant textiles and traditional clothing, and the Chiniot Museum, which showcases the city's rich cultural and historical heritage through a collection of artifacts and exhibits.
- Before reaching final destination, Arti craft hub has been proposed along the Sain Majan Road. The purpose is to make a place where different Arti Crafts of the city can showcase their work. This will reflect the cultural importance of that city and the visitors will be able to relate it to the heritage's wooden works. The total area of the proposed place is 1 acre. Shahi Sawari will be introduced as it is very good way to promote the tourism in and guest enjoy the ride of traditional transport in city for the attraction of tourist.
- Finally, the trail will lead visitors on Eid gah road to the final destination, Sheesh Mahal where visitors can enjoy for its beautiful carvings and stunning architectural design.

The palace is made of white tiles majorly and has a grand entrance with a large gate and four towers. Inside, the palace is adorned with intricate plasterwork, inlaid with marble and colorful tiles, and decorated with intricate mirrors and frescoes. The place has a lot of shrines of noble people. The palace also has a beautiful garden and a large pond, which adds to its charm and beauty.

#### **5.4.3.1. Proposal for Heritage Trail of Chiniot City**

In order to provide a unique and immersive experience for visitors, showcasing the city's rich cultural and historical roots and offering a glimpse into its traditional way of life. Following are some proposals for the development of this heritage trail:

- The heritage trail should jettison all of the encroachments. This will provide the trail more space for the visitors to enjoy the journey more comfortably.
- The drainage channels of the trail are not covered properly. The sewerage system of the trail should be covered properly.
- The façade of the buildings along the trail should be revamped and manifest a sense of homogeneity.
- The heritage trail should incorporate urban furniture e.g., rigid spaces like benches and foot paths where visitors can roam around, sit comfortably and enjoy the journey.
- There should be proper street lighting along the trail.
- Most importantly, there should be some local guides who can help visitors to visit the heritages and also explain them the cultural significance of the monuments.
- There should be signages along the trail to help visitors navigate the places easily.
- All the heritages are dilapidated to some extent. Their rehabilitation is the need of hour. Secondly, the adaptive reuse of the monuments is imperative to make visitors more attracted to the place.
- All of the monuments should display history boards.
- There should be some arrangement of cultural programs at these monuments, that will make these places more interesting to visit.

- Arti craft hub has been proposed along the Sain Majan Road. The purpose is to make a place where different arti crafts of the city can showcase their work. This will reflect the cultural importance of that city and the visitors will be able to relate it to the heritage’s wooden works. The total area of the proposed place is 1 acre. It also includes the food court having an area of 1.5 Kanal as well as parking space.



**Figure 87: Exhibition Space**



**Figure 88: Food Court and Shahi Sawari**

Source: The Urban Unit

### 5.4.3.2. Proposals for Restoration of Historic Buildings along Heritage Trail

#### a. Omer Hayat Mahal

**Historical Significance of Omar Hayat Mahal:**

The Omar Hayat Mahal is a stunning historical monument located in the city of Chiniot, Pakistan. It was built in the early 20<sup>th</sup> century by a wealthy local businessman named Omar Hayat. The Mahal is known for its elaborate architecture, which is a blend of Mughal, Gothic, and Victorian styles.



**Map 23: Location Map of Omar Hayat Mahal**

Source: The Urban Unit

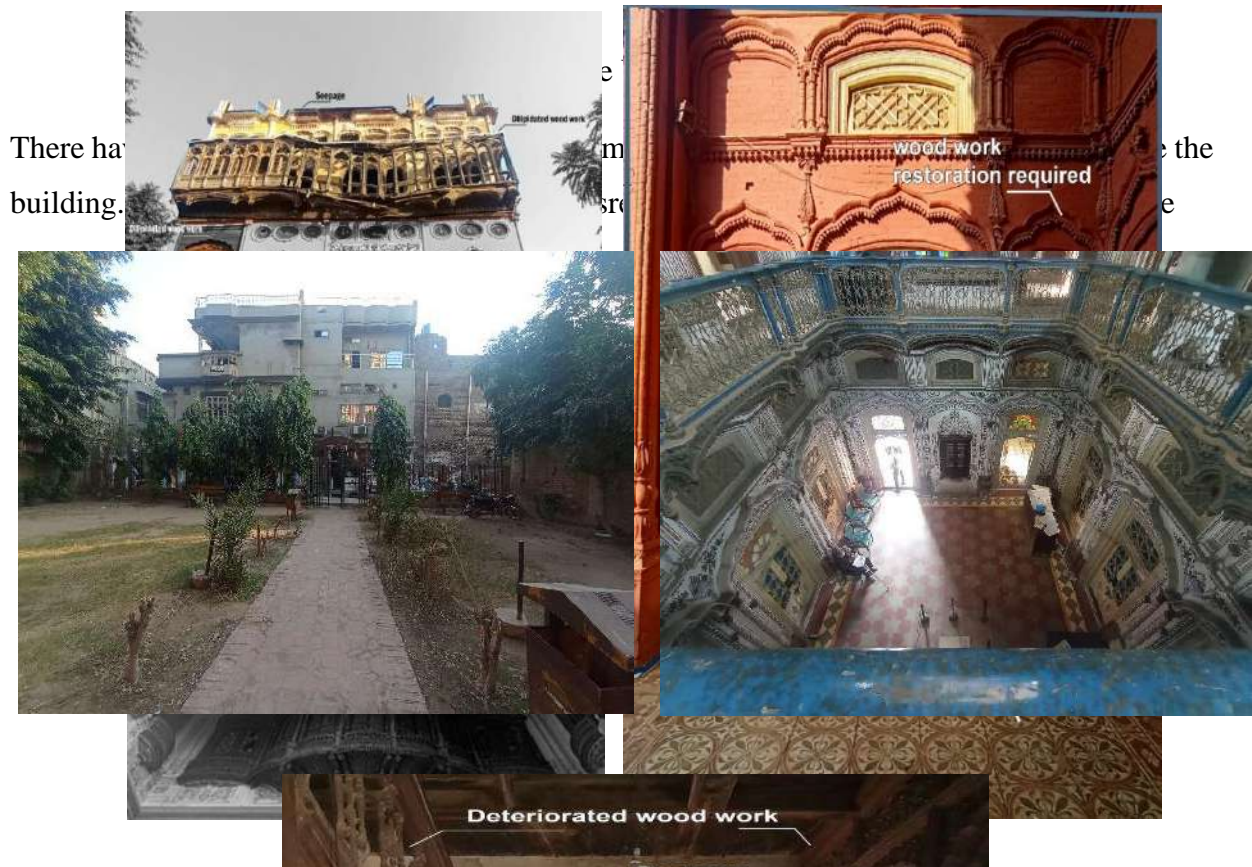
The Mahal was originally used as a residence for the Omar Hayat family, but it later served as a hospital and a school. Today, it is open to the public as a library which is yet to be functional and it is a popular tourist attraction in Chiniot. Visitors can explore the beautifully decorated rooms and marvel at the intricate wooden carvings and marble work that adorn the walls and ceilings.

The Omar Hayat Mahal is also home to a large collection of antique furniture, weapons, and other historical artifacts. These items are displayed in the various rooms of the Mahal, providing visitors with an insight into the history and culture of the region.

**Existing Condition of Omar Hayat Mahal:**

The condition of the building has reportedly been deteriorating over the years due to neglect and lack of maintenance. There are reports of cracks and other structural damage to the building, and the roof and walls are said to be in a state of disrepair. Additionally, the building has been abandoned and is currently not being used for any purpose. Specifically, the top structure of the palace is unstable and highly dilapidated. The entrance has a park which is not

well maintained. The management of the waste is poor. Nevertheless, there are no signages, which is making tourists difficult to navigate this monument.



**Figure 89: Existing Condition of Facades of Omar Hayat Mahal**

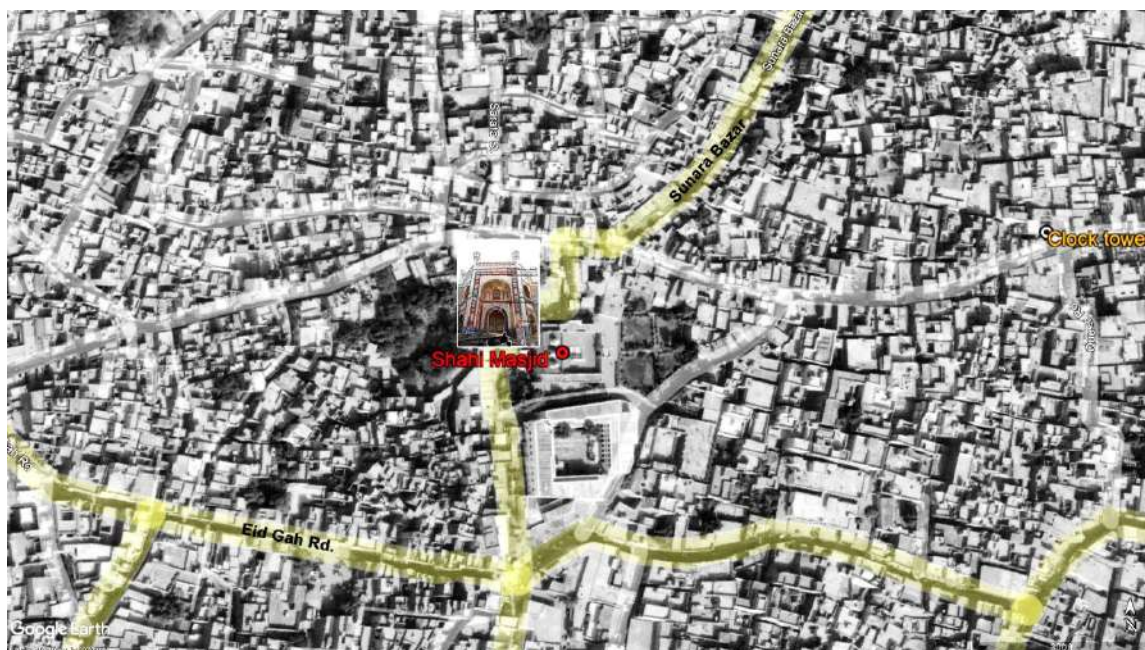


**Figure 90: Existing Condition of Park and Interior of Omar Hayat Mahal**

### b. Shahi Masjid

#### Historical Significance of Shahi masjid

The Shahi Masjid is located in central Chiniot and is a prominent landmark in this historic city. The significance of the Shahi Masjid as a heritage site cannot be overstated. This historical mosque is one of the most recognizable landmarks in Chiniot and has played an important role in shaping the culture and identity of the region for centuries. It is a three-domed structure built by Nawab Sa’adullah Khan, Governor of the Province during the reign of Shah Jahan. Dating back to the 16th century, it is famous for its intricate architecture and beautifully decorated interiors. It is also home to an impressive collection of sculptures and other works of art which have been preserved over the centuries and now form a centerpiece of the main prayer hall. The interior of this mosque is beautifully decorated and adorned with exquisite marble work and stained-glass art. There are also several beautiful inscriptions carved on the walls that detail the history of the mosque as well as some interesting information about the construction of this iconic building. As a heritage site, the Shahi Masjid contributes greatly to the cultural and economic life of the city. It provides an attractive backdrop for many traditional festivals and events and attracts large numbers of tourists to the city each year. In addition, it is a major tourist attraction in its own right and serves as an important source of revenue for the local



**Map 24: Location of Shahi Masjid**

tourism industry. It also plays an important role in religious and cultural life in the city and serves as a venue for daily prayers and sermons by the imam and local scholars.

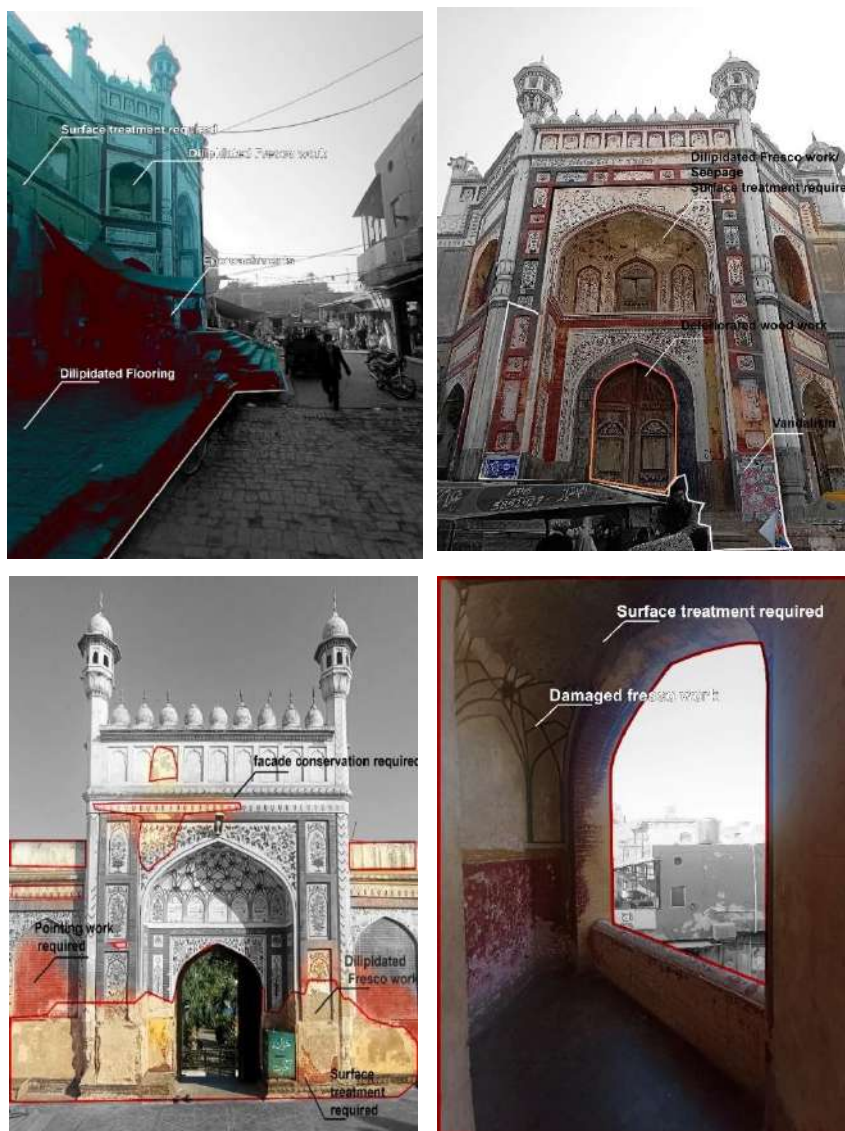
### **Existing Condition of Shahi Masjid**

The existing condition of the mosque varies greatly depending on the location and age of the building. Some mosques may be well-maintained and modern, while others may be in disrepair

or outdated. Unfortunately, Shahi Masjid is encroached by markets and is subject to vandalism on all sides. The small markets are dispersed around the Shahi masjid. Frescos and flooring are in a dilapidated condition. The park In front of the Masjid is not well maintained. The condition of the sewerage system is detrimental. The fountain present in the middle of the Masjid is not functional. However, the condition of the Shahi Masjid has deteriorated in recent years and it needs urgent repair work. Unfortunately, the condition of the mosque has deteriorated significantly in recent decades and many of the beautiful frescoes and murals are now barely visible behind the layers of dirt and grime that have accumulated over the years.







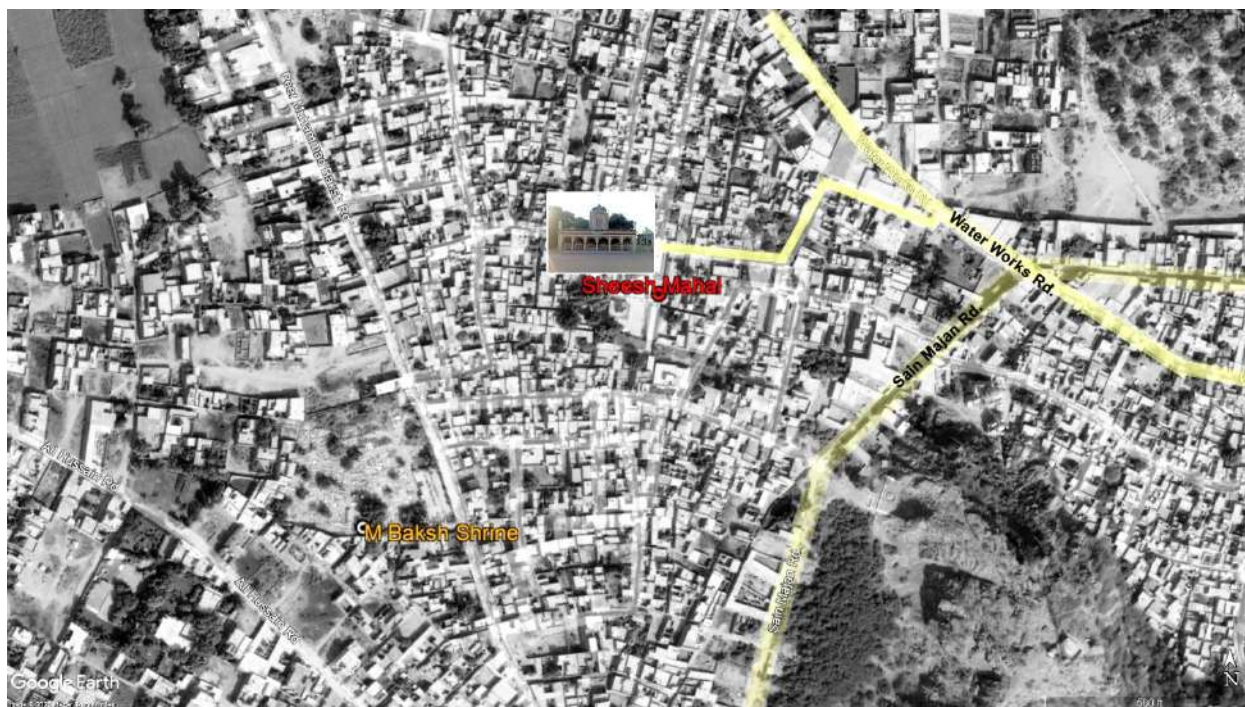
**Figure 91: Existing Condition of Shahi Masjid**

Source: The Urban Unit

### c. Sheesh Mahal

#### **Historical Significance of Sheesh Mahal:**

The Sheesh Mahal in Chiniot is a stunning palace that was built in the 19th century by Nawab Sadiq Muhammad Khan IV. It is known for its intricate carvings and stunning architectural design, which includes a combination of Mughal and European styles. The palace is made of white tiles and has a grand entrance with a large gate and four towers. Inside, the palace has a lot of shrines of noble people and it is adorned with intricate plasterwork, inlaid with marble and colorful tiles, and decorated with intricate mirrors and frescoes. Today, the Sheesh Mahal serves as a popular tourist attraction in Chiniot, attracting visitors from all over the world.



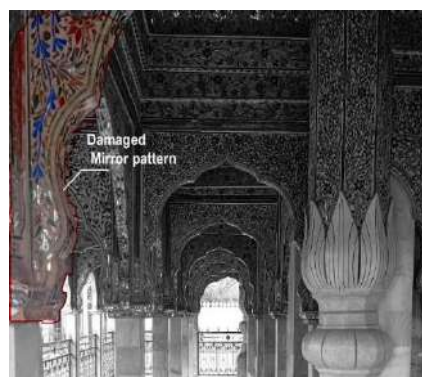
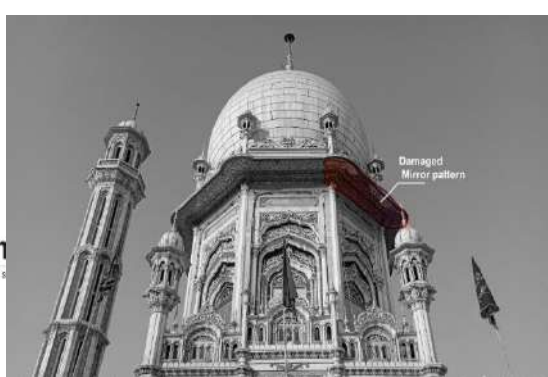
**Map 25: Location Map of Sheesh Mahal**

Source: The Urban Unit

### Existing Condition of Sheesh mahal

The existing condition of the Sheesh Mahal is generally well-preserved. The building is made of white tiles and has a series of arches and domes. The exterior of the Sheesh Mahal is adorned with intricate carvings and patterns, and the interior is decorated with intricate mosaic tiles and intricate plasterwork.

However, the Sheesh Mahal has faced some challenges in recent years. The building has suffered from neglect and a lack of maintenance, which has led to some deterioration of the structure. The pavements around the monument and the sewerage lines needs to be well maintained. There is no signage for this monument which makes difficult for tourists to navigate this place. There is an urgent need to improve the infrastructure of sheesh mahal.



Source: The Urban Unit

Despite of these challenges, the Sheesh Mahal is still a beautiful and important historical site that is worth preserving. There are some required efforts to restore and maintain the building, to keep it as a popular tourist destination in Chiniot.

### **Restoration Proposals for Heritage Buildings**

The stage wise restoration plan for all of the above heritage buildings is given following:

#### **Phase-1**

##### **(a) Stabilization**

- Supportive scaffolding to support the deteriorative super structure.



- To take immediate steps to stop storm water seepage and water penetrating in foundations.
- To make temporary drain routes to drain out any possible water seepage.
- To cover the damaged roofing directly exposed to rainwater.

### **(b) Architectural/Structural Assessments Analysis**

The structure is found with damages, cracks, and foundations settlement therefore the buildings need complete study and structural analysis and load calculations. In the light of these studies, it can be made structurally stable and could be assigned a function accordingly.

#### **Phase-2**

##### **Documentation**

Architectural studies of built features: Measured Drawings and baseline survey documentation. Including documentation of all façades pigmentations/Seepage/Cracks etc. Documentation of Plans of Floors and roofs showing cracks, material damage etc.

#### **Phase-3:**

##### **Site Clearance/Preparation for Structural rehabilitation & restoration**

- Removal of debris
- Scraping off the mortar off the walls to expose superstructure.
- Clearing drainage routes and providing temporary routes to drain out any possible water seepage.
- Removals of roofing damaged structural elements and roofing tiles.

#### **Phase-4:**

##### **Structural Rehabilitation**

- Structural supportive scaffolding where required.
- Structural strengthening of the building and foundations treatment (injection method) to stop further structural settlement.
- Restoration of the super-structure.
- Reinforcing the sub-structure.
- Retrofitting/false structure to achieve stability and stop further deterioration.

#### **Phase-5:**



### **Restoration/Preservation**

- Restoration/reconstruction of missing/damaged design elements.
- Treatment and surfacing of design elements i-e floors, ceiling motifs etc.
- Restoration/preservation of damaged masonry works.
- Restoration/preservation of wood works.
- Wall surfacing and façade pointing.
- Interior furnishing and minor detailing.
- Landscape works, street scape improvement & public access.

### **Phase-6: Infrastructural Rehabilitation/Systems Design**

- Public health systems.
- Electrical systems.
- IT systems.
- Security systems.
- Health & safety



## SECTION VI: IMPLEMENTATION TIMELINE

A short, medium- and long-term implementation timeline of proposed projects has been provided below, based on recommendations of the project team as well as recommendations of the district administration. Cost estimates of the projects are also included:

**Table 3: Implementation Timeline for Tourism Sector Projects**

SR. No	Department	Timeframe	Description	Cost PKR Million
<b>Faisalabad District</b>				
1	Local Government & Community Development Department/ Tourism Development Corporation of Punjab	Short Term	Online Tourist visitor data and management system; onsite visitor logbooks and feedback	<b>15</b>
2	Local Government & Community Development Department	Short Term	Fencing and Upgradation of Gumti Square	<b>2</b>
3	Local Government & Community Development Department	Medium Term	D-Ground Upgradation	<b>20</b>
4	Directorate General of Archaeology Tourism Department, Government of The Punjab	Medium Term	Conservation of Darbar Mirza Sahiban, Faisalabad	<b>23</b>
5	Directorate General of Archaeology Tourism Department, Government of The Punjab	Medium Term	Conservation and Upgradation of Muslim League Office, Montgomery Bazar, Clock Tower, Faisalabad	<b>20</b>
6	Directorate General of Archaeology Tourism Department, Government of The Punjab	Medium Term	Conservation of Sita Ram Temple	<b>8</b>
8	Tourism Development Corporation of Punjab	Medium Term	Establishment of Regional office of Tourism Department	<b>89</b>
9	Directorate General of Archaeology Tourism Department, Government of The Punjab	Medium Term	Establishment of Regional office of Archaeology Tourism Department	<b>50</b>
<b>Chiniot District</b>				
1	Local Government & Community Development	Short Term	Online Tourist visitor data and management system; onsite visitor logbooks and feedback	<b>15</b>

	Department/ Tourism Development Corporation of Punjab			
2	Directorate General of Archaeology Tourism Department, Government of The Punjab/ Auqaf and Religious Affairs Department, Government of the Punjab	Medium Term	Restoration of Shahi Masjid, Chiniot	<b>120</b>
3	Directorate General of Archaeology Tourism Department, Government of The Punjab	Medium Term	Infrastructure Development for Sheesh Mahal, Chiniot	<b>50</b>
4	Directorate General of Archaeology Tourism Department, Government of The Punjab	Medium Term	Structure Rehabilitation and Restoration of Omar Hayat Mahal, Chiniot	<b>80</b>
5	Local Government & Community Development Department/ Auqaf and Religious Affairs Department, Government of the Punjab	Medium Term	Revitalization of Boo Ali Qalandar Site Complex	<b>15</b>
6	Tourism Development Corporation of Punjab	Short Term	Upgradation of TDCP Park	<b>7</b>
7	Local Government & Community Development Department/ Tourism Development Corporation of Punjab	Medium Term	Heritage Trail (from Omar Hayat To Sheesh Mahal through Cultural Center)	<b>750</b>
8	Local Government & Community Development Department/ Tourism Development Corporation of Punjab	Medium Term	Development of Chenab Beach	<b>213</b>
9	Directorate General of Archaeology Tourism Department, Government of The Punjab	Medium Term	Conservation of Abandoned Bara Mandir, Chiniot	<b>35</b>
	Directorate General of Archaeology Tourism Department, Government of The Punjab	Medium Term	Establishment of District office of Archaeology Tourism Department	<b>25</b>
<b>,Jhang District</b>				

1	Local Government & Community Development Department/ Tourism Development Corporation of Punjab	Short Term	Online Tourist visitor data and management system; onsite visitor logbooks and feedback	<b>15</b>
2	Tourism Development Corporation of Punjab	Medium Term	Upgradation of Park at Trimmu Barrage	<b>3</b>
3	Local Government & Community Development Department/ Tourism Development Corporation of Punjab	Medium Term	Revitalization of Mai Heer Tomb	<b>35</b>
4	Local Government & Community Development Department/ Tourism Development Corporation of Punjab	Medium Term	Revitalization of Shah Jeewana Shrine	<b>10</b>
5	Local Government & Community Development Department/ Tourism Development Corporation of Punjab	Medium Term	Upgradation of Municipal Stadium	<b>1.5</b>
6	Local Government & Community Development Department/ Tourism Development Corporation of Punjab	Medium Term	Upgradation of Mai Heer Stadium	<b>4</b>
7	Local Government & Community Development Department/ Tourism Development Corporation of Punjab/ Auqaf and Religious Affairs Department, Government of the Punjab	Medium Term	Revitalization of Sultan Bahoo Shrine	<b>13</b>
8	Directorate General of Archaeology Tourism Department, Government of The Punjab	Medium Term	Restoration of Gilmala Fort, Jhang	<b>45</b>
9	Local Government & Community Development Department	Medium Term	Development and upgradation of Chund Bharwana/Rivaz Bridge	<b>20</b>

10	Directorate General of Archaeology Tourism Department, Government of The Punjab	Medium Term	Conservation of Hindu Temple, Jhang-Chiniot road	3
11	Directorate General of Archaeology Tourism Department, Government of The Punjab	Medium Term	Conservation of Temple Moza, Suleimna Tehsil Bhowana District	5
<b>Toba Tek Singh District</b>				
1	Local Government & Community Development Department/ Tourism Development Corporation of Punjab	Short Term	Online Tourist visitor data and management system; onsite visitor logbooks and feedback	15
2	Local Government & Community Development Department/ Tourism Development Corporation of Punjab	Medium Term	Upgradation of Teko Park	2
3	Local Government & Community Development Department/ Tourism Development Corporation of Punjab	Medium Term	Upgradation of Rajana Wildlife Park	60
4	Local Government & Community Development Department/ Tourism Development Corporation of Punjab	Short Term	Upgradation of Manzoor Elahi Park	1.6
5	Local Government & Community Development Department/ Tourism Development Corporation of Punjab	Short Term	Upgradation of Iqbal Park, Pir Mahal	1.2
<b>Total Cost</b>				<b>1912 (1.91 Billion)</b>