

EDUCATION SECTOR PLAN



SARGODHA Regional Development Plan



The Urban Unit

Urban Sector Planning & Management Services 2012-2015



Disclaimer

Urban Sector Planning and Management Sector Unit (Pvt.) Ltd. has prepared this report as Human Capital Plan for Bahawalpur Division. Maximum care and caution were observed while developing this document.

No part of this document may be reproduced or transmitted in any form or by any mechanism including photocopying, recording or information storage and retrieval of the express permission, in writing, by competent authority.

The opinions expressed in the document are solely those of the authors and publishing in any way constitute endorsement of the opinion by the Urban Unit.

Technical Team

Mr. Khurram Afzal, Sr. Specialist Economics, The Urban Unit

Dr. Ghulam Moheyuddin, Urban Economist, The Urban Unit

Ms. Alishae Khar, Senior Research Analyst, The Urban Unit

Ms. Mahnoor Arif, Research Associate Education, The Urban Unit

Executive Summary

Chapter 2:

2.1 Introduction

The mandate of providing public sector School Education in the Sargodha division is with the School Education Department. This department caters to the provision of Primary, Elementary, High and Higher Secondary levels of education. Furthermore, Higher Education consists of Intermediate, Degree and Post-graduate colleges and is administered both by the Higher Education Department (Punjab) and Higher Education Commission.

Overall in the division, there are 2007 Primary schools, 837 Elementary schools, 694 High schools and 81 Higher Secondary schools. As far as Higher Education is concerned, there are 34 Male and 43 Female colleges and 15 Commerce Colleges in the division. Along with 3 public sector universities.

While the accessibility is fairly satisfactory of the educational facilities, the baseline statistics (described below) are indicative of the division's over all low –performance. A myriad of both demand and supply-side factors contribute to low educational related outcomes which include: historical neglect, lack of funding, poor governance, mismanagement- are some of the supply-sided constraints to education Whereas lack of awareness, literacy, social conservatism, poverty; are some of the demand-sided constraints; that add to the impediment of education.

The Adult literacy rate in Sargodha division is significantly lower than the average literacy rate of Punjab. However, Youth Literacy rate is better than the provincial average. This is indicative of a high proportion of literate youth in the division and the opportunity for investing in the education sector here. This indicator is quite imperative as it highlights the situation of

education and also the overall socio-economic wellbeing of a region. A district wise analysis of literacy rates reveals that Bhakkar and Khushab are generally underperforming districts followed by Mianwali while Sargodha performs relatively better than the rest.

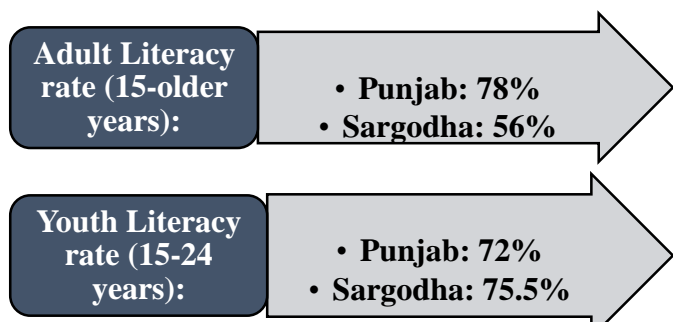


Figure 1: Adult & Youth Literacy rate in Punjab and Sargodha division

All in all, education is a neglected sector of the economy. The table below shows the key performance indicators of education, taken from PSLM 2020 and MICS 2018 reports.¹ They provide a holistic overview of the educational landscape in Sargodha division, which are compared against the statistics of Punjab as a benchmark. The cells highlighted in green represent satisfactory performance of a district, red cells reveal underperformance and yellow cells are indicative of same performance as Punjab. As it can be seen, the education KPI's for the division are usually highlighted with the red cells specifically for indicators related to Attendance rate, Transition rates, Adult literacy rates and Out of School children.

And redress in this aspect is needed, to bring about overall socio-economic development.

¹ Pakistan Social and Living Standards Measurement Survey, 2019 and Multiple Indicator Cluster Survey, 2018

Key Performance Indicators

Table 1: Key Performance Indicators (MICS 2017-18 & PSLM 2019-20)

Sr.No	Indicator	Explanation	Sargodha	Bhakkar	Khushab	Mianwali	Punjab
1	Gross Enrollment Rate (Primary)	Gross Enrollment Rate at the Primary level Ages 5-9	93.91	93.11	74.87	91.97	53
2	Gross Enrollment Rate (Middle)	Gross Enrollment Rate at the Middle level Ages 10-12	37.61	28.83	29.13	32.69	59
3	Gross Enrollment Rate (Matric)	Gross Enrollment Rate at the Matric level Ages 13-14	72.51	59.51	61.48	67.43	63
4	Adult Literacy rate	Adult Literacy- Percentage of Population aged 10 Years and Older	63	49	56	56	78
5	Youth Literacy rate	Youth Literacy-Percentage of Population aged 15-24 Years	82	70	78	72	72
6	Percentage of Out of School children	Percentage of Out of school Children age 5-16 Years, Punjab, 2019-20	18.46	25.76	23.26	20.7	24

Sr.No	Indicator	Explanation	Sargodha	Bhakkar	Khushab	Mianwali	Punjab
7	School Readiness	Percentage of children attending first grade of primary school who attended pre-school the previous year, Punjab, 2017-18	93.91	93.11	74.87	91.97	91
8	Primary School Entry rates	Percentage of children of primary school entry age entering grade 1 (net intake rate), Punjab, 2017-18	35.45	47.01	33.8	32.32	30
9	Net Attendance Rate (Primary)	Percentage of children of primary school age attending primary or secondary school (adjusted net attendance ratio), percentage attending early childhood education, and percentage out of school, Punjab, 2017-18	72.51	59.51	61.48	67.43	65
10	Out of School Children (Primary)	Percentage of children of primary school age attending primary or secondary school (adjusted net attendance ratio), percentage attending early childhood education, and percentage out of school, Punjab, 2017-19	16.38	15.36	18.94	14.34	13
11	Net Attendance Rate (Lower Secondary)	Percentage of children of Lower secondary school age attending primary or secondary school (adjusted net attendance ratio), percentage attending early childhood education, and percentage out of school, Punjab, 2017-20	21.65	20.45	23.65	21.91	37

Sr.No	Indicator	Explanation	Sargodha	Bhakkar	Khushab	Mianwali	Punjab
12	Out of School Children (Lower Secondary)	Percentage of children of Lower secondary school age attending primary or secondary school (adjusted net attendance ratio), percentage attending early childhood education, and percentage out of school, Punjab, 2017-21	19.18	22.9	18.07	24.61	20
13	Net Attendance Rate (Upper Secondary)	Percentage of children of Upper Secondary school age attending primary or secondary school (adjusted net attendance ratio), percentage attending early childhood education, and percentage out of school, Punjab, 2017-22	66.39	57.88	66.6	64.37	29
14	Out of School Children (Upper Secondary)	Percentage of children of Upper secondary school age attending primary or secondary school (adjusted net attendance ratio), percentage attending early childhood education, and percentage out of school, Punjab, 2017-18	54.55	41.54	50.48	54.43	34
15	Age for Grade (Primary)	Percentage of children over age by 1 year by grade of attendance :	10.22	11.62	11.87	12.35	11.8

Sr.No	Indicator	Explanation	Sargodha	Bhakkar	Khushab	Mianwali	Punjab
16	Age for Grade (Primary)	Percentage of children over age by 2 years by grade of attendance :	16.38	15.36	18.94	14.34	15.7
17	Age for Grade (Lower Secondary)	Percentage of children over age by 1 year by grade of attendance :	21.6	20.4	23.6	21.9	20
18	Age for Grade (Lower Secondary)	Percentage of children over age by 2 years by grade of attendance :	19.2	22.9	18.1	24.6	19.6
19	Completion rate	Primary school completion rate	66.39	57.88	66.6	64.37	66.3
		Lower secondary completion rate	94.98	93.37	93.73	97.99	56.1
		Upper secondary completion rate	76.26	69.38	76.55	78.72	38.6
20	Transition rate	Effective transition rate to lower secondary school	60.94	26.76	49.65	42.84	90.8
21	Gender Parity Index	Gender parity index (GPI) for primary school adjusted NAR	1.04	0.99	0.85	0.89	0.99

Sr.No	Indicator	Explanation	Sargodha	Bhakkar	Khushab	Mianwali	Punjab
		Gender parity index (GPI) for lower secondary school adjusted NAR	1.22	0.96	0.64	0.86	1.05
		Gender parity index (GPI) for upper secondary school adjusted NAR	0.97	0.74	0.7	0.53	1.08
22	Participation rate (Primary)	Participation rate primary and secondary, Punjab, 2017-18	94.98	93.37	93.73	97.99	94.8
23	Participation rate (Secondary)	Participation rate primary and secondary, Punjab, 2017-19	93.91	93.11	74.87	91.97	79
24	Parental Involvement	Percentage of children for whom an adult household member in the last year received a report card for the child1	37.61	28.83	29.13	32.69	59.3
25	Parental Involvement	Percentage of schools that have a governing body open to parents	72.51	59.51	61.48	67.43	18.8
26	School-related reasons for inability to attend class	Percentage of children who in the last year could not attend class due to absence of teacher or school closure	7.46	15.09	16.77	11.99	32.5

Sr.No	Indicator	Explanation	Sargodha	Bhakkar	Khushab	Mianwali	Punjab
27	Foundational Learning Skills (Reading)	Percentage of children who demonstrate foundational reading skills	34.31	30.74	33.65	34.89	32.8
28	Foundational Learning Skills (Numeracy)	Percentage of children who demonstrate foundational numeracy skills	5.11	17.07	3.72	21.63	4.5
29	Population School Participation rate	Population That Has Ever Attended School	57	61	60	68	66
30	Primary Completion rate in population	Percentage Distribution of Population That Has Completed Primary Level Or Higher - By	46	52	51	59	56
31	Gross Enrolment Rate (Primary Level)	Gross Enrolment Ratio At The Primary Level (Age 5-9)- By Province & District	95	104	88	99	90
32	Gross Enrolment Rate – Government School (Primary Level)	Gross Enrolment Ratio For Government Primary Schools (Age 5-9)- By Province & District	78	79	57	64	53
33	Net Enrolment Rate (Primary Level)	Net Enrolment Rate At The Primary Level (Age 5-9)- By Province & District	59	63	53	64	56
34	Net Enrolment Rate – Government School (Primary Level)	Net Enrolment Rate In Government Primary Schools (Age 5-9)- By Province & District	47	47	34	38	32

Sr.No	Indicator	Explanation	Sargodha	Bhakkar	Khushab	Mianwali	Punjab
35	Primary Enrollment in Government schools	Primary Level Enrolment in Government Schools A Percentage Of Total Primary	81	76	65	64	59
		Primary Level Enrolment In Government Schools A Percentage Of Total	80	73	64	60	56
36	Gross Enrolment Rate (Middle Level)	Gross Enrolment Ratio At The Middle Level (Age 10-12)- By Province & District	59	68	65	69	61
37	Net Enrolment Rate (Middle Level)	Net Enrollment Rate Middle Level Age 10-12	24	24	26	30	25
38	Gross Enrolment Rate (High School)	Gross Enrolment Ratio At The Matric Level (Age 13-14)- By Province & District	45	67	51	68	65
39	Net Enrolment Rate (High School)	Net Enrolment Rate At The Matric Level (Age 13-14)- By Province & District	12	17	14	18	16
40	Out-of-School Children	Percentage of Out of School Children Age 5-16 Years	26	22	27	18	24

2.1.2 Objectives and Scope of Work

The overall objective of the education sector plan is to analyse the accessibility and outreach of the education sector and to see how public service delivery of education services can be improved through integrated regional planning. The scope of work is as follows:

- A comprehensive situational analysis of education facilities in Sargodha division by benchmarking with the provincial landscape.

- Identification of regional spread of schools and universities and spatially mapping them through GIS based maps (subject to availability of spatial coordinates and data).
- Identification of development or upgradation needs for existing education facilities and infrastructure through stakeholder engagement.
- Brief Education Sector Plan (with short, medium- and long-term targets), incorporating demand-based project pipeline for ADP and donor funding.

2.1.3 Methodology and Framework

At the outset, the report covers the overall situational analysis of the current educational landscape in the Sargodha division. To this end, primary and secondary data has been employed through a mixed methods approach (both quantitative and qualitative) to provide a thorough analysis of the educational facilities. Data from secondary datasets, survey reports and departmental dashboards has been used to conduct a district-wise analysis of the numerical quantity, spatial spread, infrastructural condition and student participation in the educational facilities of Bahawalpur division.

Furthermore, Secondary data was further validated through ground assessment by conducting field visits and stakeholder consultations to efficiently and adequately identify the administrative gaps and institutional challenges prevailing in the division that impede education service delivery. This is further accompanied by a spatial accessibility analysis to develop an integrated plan with short-, medium- and long-term education targets. This proposed framework identifies the type of intervention needed through site assessment and gives an overall project direction for an integrated social development plan.

For the identification of gaps and other operational issues existing in the education sector of the Sargodha region, various secondary sources have been reviewed including provincial and district-wise reports (MICS, PSLM, ASER, ACS etc.) and School Information System (SIS) dashboard. Moreover, primary data was also collected through an initial field visit of the Urban Unit team to education facilities in Sargodha, Khushab, Bhakkar and Mianwali districts, in February 2022. Key stakeholders from all the four districts were also consulted including: Education Team (SED), DD Development (Bhakkar), DD Development (Mianwali), CEO Education (Sargodha), CEO Education (Khushab) CEO Education, (Mianwali) CEO Education, (Bhakkar)

The following steps of research framework have been adopted:

- Collection of Secondary Data
- Collection and Access to Departmental data and dashboards (SIS)
- Review of data, literature and desk research
- Ground assessment through field visits
- Stakeholder consultation and meetings
- Situation Analysis to identify gaps and challenges of the education sector
- Development of short-, medium- and long-term plan for both School Education and Higher Education

2.2 Situational Analysis of Education in Sargodha Division

The following three-tiered approach in assessing the situational analysis of the education sector in Sargodha division.

- Physical Analysis:** The physical attributes are analysed through three different dimensions. First the spatial analysis, looks at the overall spread of the educational facilities. Then different layers of population settlements, natural barriers, infrastructure network and other contours are added to conduct the accessibility analysis. The accessibility analysis gives us an understanding of population serviced within the settlement areas. And lastly, the infrastructure analysis, gives as an idea to the quality of infrastructure and identify areas of further improvement. These three analyses are conducted for each educational level in Sargodha division.
- Statistical Analysis:** The statistical analysis is conducted by looking at existing data sets, reports, case studies and existing literature on the state of education in Sargodha. This analysis is conducted on overall educational related outcomes. It looks at all key important indicators of education from enrolment, transition, completion rates to learning outcomes. These numbers are very important for bettering our understanding of the sector. And in identifying the problem area in education.
- Ground-Level Analysis:** To further solidify the understanding of this sector, repeated site visits, ground assessments, stakeholder and consultative sessions were carried out in the division of Sargodha. This exercise helped to further validate the findings from the earlier two assessments. In addition to adding more practical knowledge and on-site assessment. Through random sampling, the team visited different education facilities and assessed the

quality of education through personal observations. Different meetings, stakeholder and consultative sessions also added to this wealth of knowledge.

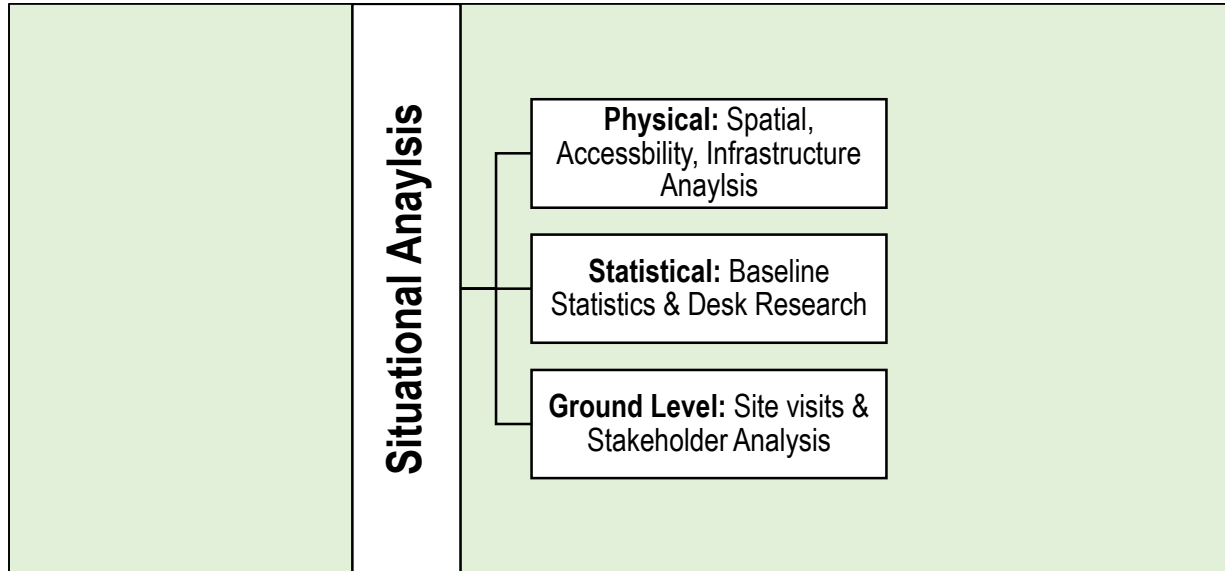


Figure 2: Illustrates the three-tiered approach uses in the assessing the current state of education in Sargodha Division.

SITUATIONAL ANALYSIS



DISTRICT BHAKKAR



Map of District Bhakkar

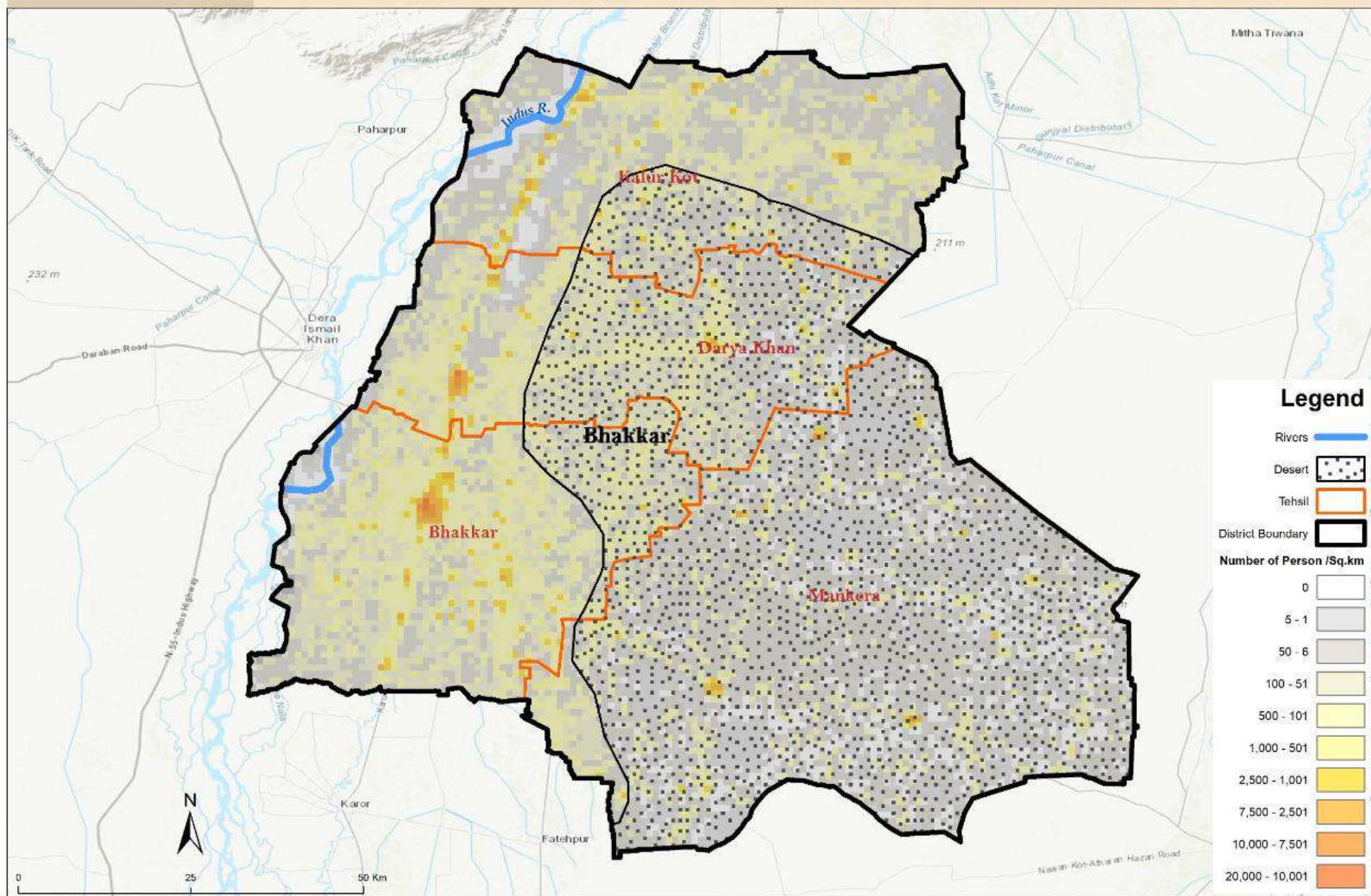


Figure 3: Spatial analysis of Area and Population statistics – Bhakkar district

Bhakkar district

Table 2: Population and Area statistics

Administrative Unit	Area (Sq. Km.)	All Sexes	Sex Ratio	Population Density Per Sq. Km.	Urban Proportion
Bhakkar Tehsil	2,427	683,939	104.62	281.80	16.49
Darya Khan Tehsil	1,719	360,427	105.68	209.67	22.31
Kalur Kot Tehsil	2,239	346,591	104.37	154.80	15.08
Mankera Tehsil	1,768	256,895	104.46	145.30	5.51
Bhakkar District	8,153	1,647,852	104.77	202.12	15.76

This particular district is marked with:

Low Population Density: The numbers indicate that about 145-280 persons are living per square km, at each tehsil level.

Small Urban Proportion: Overall urbanization in this district is low. With Mankera showing least urban proportion and Daryya Khan, indicating highest.

Comparable Sex Ratio: Sex ratio indicates that for every 100 female, there are about 104-105 males, at each tehsil level.

School Education

Primary Schools

(a) Physical Analysis

There are 1017 Primary schools in Bhakkar district, with 550 female and 467 male schools. The overall accessibility of Primary schools in this region is quite satisfactory, as on average 5 schools are located to cater for 1000 primary school-age going children.

Table 3: Total Male & Female schools in Bhakkar district

District/ Gender	Total schools	Total facilities/ 1000 people (5-9 years)
Bhakkar District	1,017	5
Female	550	
Male	467	

Table 4: Total Male & Female schools in Bhakkar district (Tehsil wise)

Tehsil/Gender	Total Schools
Bhakkar	397
Female	243
Male	154
Darya Khan	235
Female	124
Male	111
Kallur Kot	198
Female	115
Male	83
Mankera	187
Female	68
Male	119

(b) Infrastructural Analysis

The provision of most infrastructural facilities is satisfactory in the division. However, playground and library are mostly missing in most of the schools, Additionally, in Primary schools the issue of overcrowded classrooms is quite prevalent, hence students are accommodated in open-air/shelter-less classrooms due to a high shortage of classrooms.

Table 5: Infrastructural Assessment

Primary Schools	Availability of Boundary wall	Availability of Electricity	Availability of Drinking water	Availability of usable Toilets	Availability of Playground
-----------------	-------------------------------	-----------------------------	--------------------------------	--------------------------------	----------------------------

1017	1015	1004	1016	3096	525
Gap Analysis					
Total Open-Air Classrooms		Total Dangerous classrooms		Primary schools without a proper library	
2189		56		944	

(c) Spatial Analysis

In Bhakkar, while Primary schools are densely spread throughout the district, yet most of the Primary schools are located in Tehsil Bhakkar, Darya Khan followed by Kallur Kot and Mankera.

Following figure represents the spatial spread of these schools. Blue dots represent male schools, while pink dots represent female schools.

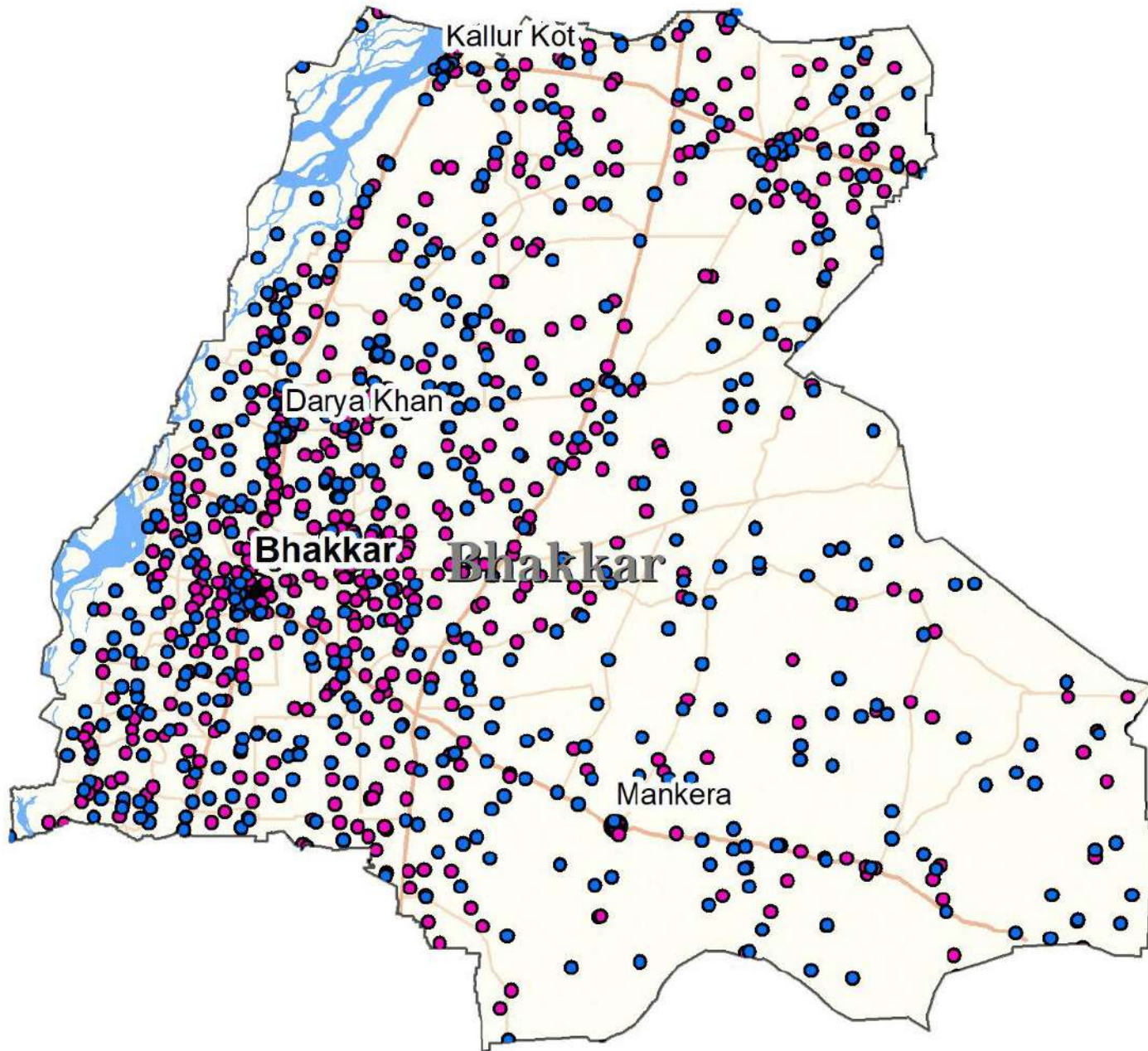


Figure 4: Spatial spread of Primary Schools - Bhakkar district

Middle Schools

(a) Physical Analysis

There are 199 Middle schools in Bhakkar district, with 104 Female and 95 Male schools, on average. As far as school accessibility is concerned, Middle schools in Bhakkar are spread with an average of 2 Middle schools for 1000 middle school age going children.

Table 6: Total Male & Female Middle schools in Bhakkar district

District/ Gender	Total schools	Total facilities/ 1000 people (10-12 years)
Bhakkar	199	2
Female	104	
Male	95	

Table 7: Total Male & Female Middle schools in Bhakkar district (Tehsil wise)

Tehsil/Gender	Total Schools
Bhakkar	71
Female	42
Male	29
Darya Khan	41
Female	21
Male	20
Kallur Kot	50
Female	27
Male	23
Mankera	37
Female	14
Male	23

(b) Infrastructural Analysis

While most Middle schools have basic facilities like boundary wall, electricity, drinking water and toilets, Playgrounds are missing in most schools. There is a huge shortage of IT labs, as 79% of these schools lack it. Furthermore, libraries, along-with unavailability of classrooms.

Table 8: Middle schools infrastructural assessment

Middle Schools	Availability of Boundary wall	Availability of Electricity	Availability of Drinking water	Availability of usable Toilets	Availability of Playground
199	198	197	199	1082	128
Gap Analysis					
Total Open-Air Classrooms	Total Dangerous classrooms	Middle schools without a proper library		Middle schools without IT labs	
286	24	100		159	

(c) Spatial Analysis

In Bhakkar, while Middle schools are thinly spread throughout the district, and most of these schools are located in Tehsil Bhakkar and Kallur Kot . However, Mankera and Darya Khan have fewer number of middle schools.

Following figure represents the spatial spread of these schools. Blue dots represent male schools, while pink dots represent female schools.

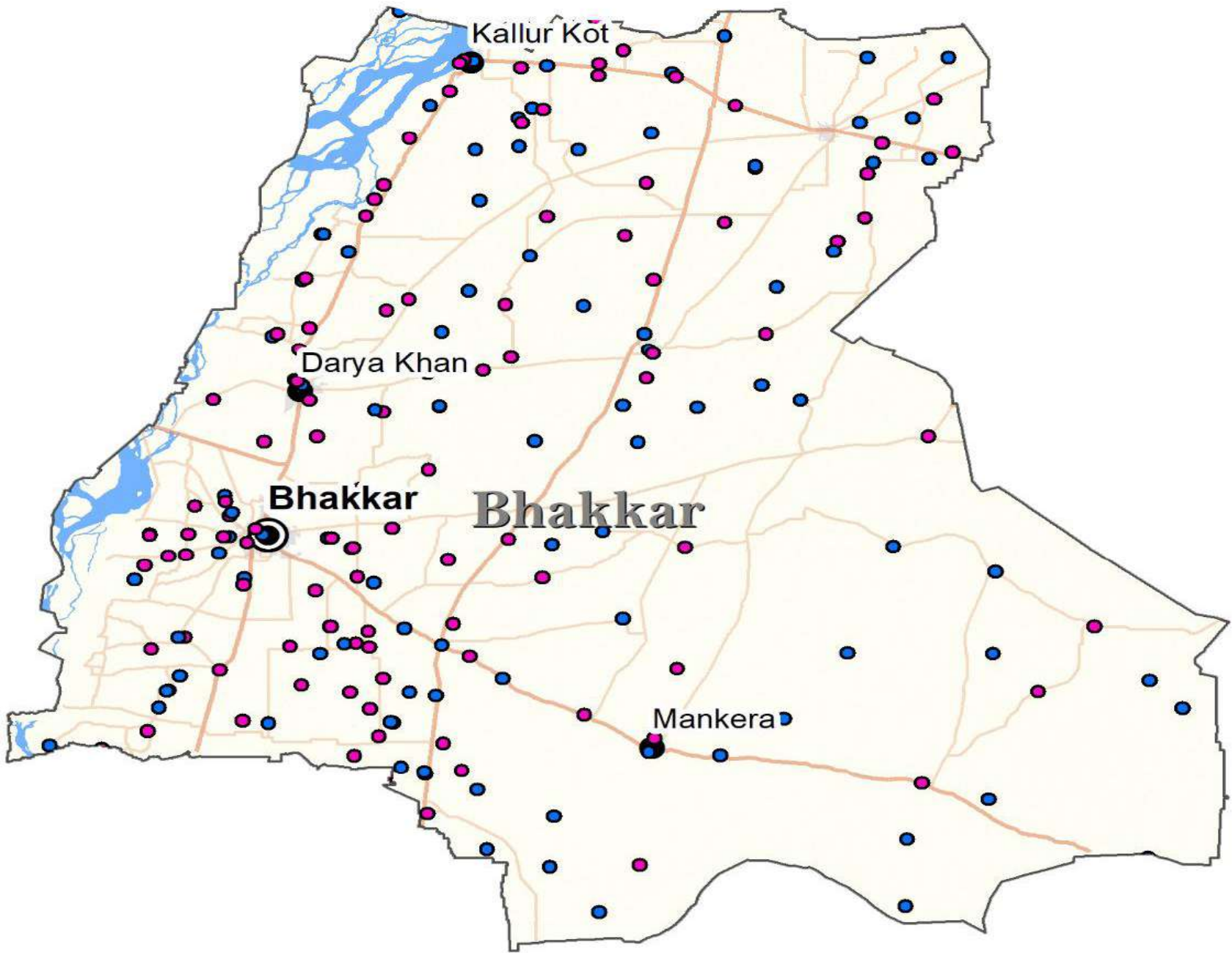


Figure 5: Spatial spread of Middle Schools - Bhakkar district

High Schools

(a) Physical Analysis

There are over 114 High schools in the entire district, with 43 Female and 71 Male schools. Most of the High schools are located in Bhakkar and Kallur Kot Tehsils. Mankera and Darya Khan, on the other hand face an accessibility of High and Higher Secondary schools. On average, in the entire district there are approximately 2 schools available at this level to cater to 1000 High school-going age population.

Table 9: Total Male & Female High schools in Bhakkar district

District/ Gender	Total schools	Total facilities/1000 people (13-14 years)
Bhakkar	114	2
Female	43	
Male	71	

Table 10: Total Male & Female High schools in Bhakkar district (Tehsil wise)

Tehsil/Gender	Total Schools
Bhakkar	45
Female	19
Male	26
Darya Khan	19
Female	7
Male	12
Kallur Kot	29
Female	10
Male	19
Mankera	21
Female	7
Male	14

(b) Infrastructural Analysis

High Schools in this district are mostly well provisioned with basic infrastructural facilities, compared with facilities at lower level, However, there continues to be a shortage of Science labs, libraries and classrooms.

Table 11: High Schools Infrastructural Assessment

High Schools	Availability of Boundary wall	Availability of Electricity	Availability of Drinking water	Availability of usable Toilets	Availability of Playground
114	114	114	114	1025	89
Gap Analysis					
Total Open-Air Classrooms	Total Dangerous classrooms	High schools without a proper library	High schools without IT labs	High schools without Science labs	
190	56	102	1	58	

(c) Spatial Analysis

In Bhakkar, High schools are thinly spread and scattered throughout the district. Most of these schools are located in Tehsils Bhakkar and Kallur Kot. Darya Khan and Mankera have the fewest number of High schools relatively. Additionally, female accessibility of High schools is fairly low compared to male High schools.

Figure represents the spatial spread of these schools. Blue dots represent male schools, while pink dots represent female schools.

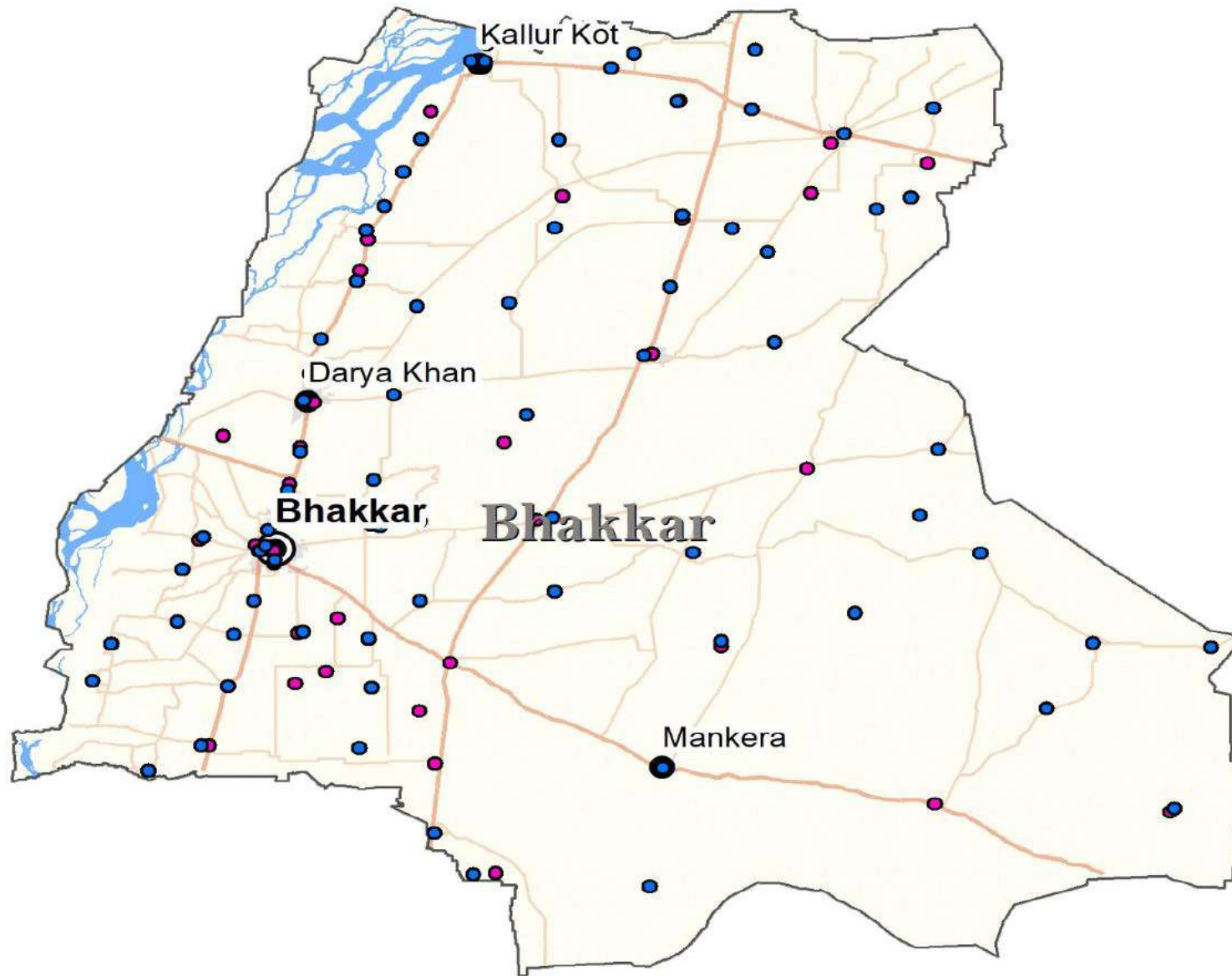


Figure 6: Spatial spread of High Schools - Bhakkar district

Higher Secondary Schools and Colleges

(a) Physical Analysis

There are 11 Higher Secondary schools in district Bhakkar. Their proportion is significantly low, as on average there is not even a single facility for 1000 school going age population at this level. Additionally, there are 17 Intermediate colleges in the entire district.

Table 12: Total Male & Female High Sec schools and Intermediate colleges in Bhakkar district

District/ Gender	Total schools	Total Intermediate Colleges	Total facilities/1000 people (15-16 years)
Bhakkar	11	17	0.2
Male	6	8	
Female	5	9	

The following figures reveal that there is not even a single Higher Secondary school in Tehsil Darya Khan and no female Higher Secondary facility for females in Tehsil Mankera. Therefore, Female Higher Secondary education is fairly inaccessible in Tehsils Mankera, Kallur Kot and Darya Khan.

Table 13: Total Male & Female High Sec schools and Intermediate colleges in Bhakkar district (Tehsil wise)

Tehsil/Gender	Higher Secondary Schools
Bhakkar	5
Female	3
Male	2
Darya Khan	0
Female	0
Male	0
Kallur Kot	3
Female	2
Male	1
Mankera	3
Female	0
Male	3

(a) Infrastructural Analysis

Across various infrastructural parameters, Higher Secondary schools perform relatively better than schools at lower levels. However, Science lab is one such facility whose adequate provision is required.

Table 14: High Sec. Schools Infrastructural Assessment

Higher Secondary Schools	Availability of Boundary wall	Availability of Electricity	Availability of Drinking water	Availability of usable Toilets	Availability of Playground
11	11	11	11	130	7
Gap Analysis					
Total Open-Air Classrooms	Total Dangerous classrooms	High Sec. schools without a proper library	High Sec. schools without IT labs	High Sec. schools without Science labs	
10	1	1	0	3	

(d) Spatial Analysis

In Bhakkar, Higher Secondary schools are thinly spread and scattered throughout the district. Majorly these schools are located in Tehsils Bhakkar and Kallur Kot. Darya Khan and Mankera have the fewest number of Higher Secondary schools schools relatively. Additionally, female accessibility of Higher secondary schools is fairly low compared to male High schools. Mankera and Darya Khan do not have single female facility for this level.

Figure represents the spatial spread of these schools. Blue dots represent male schools, while pink dots represent female schools and green badges show Intermediate colleges.

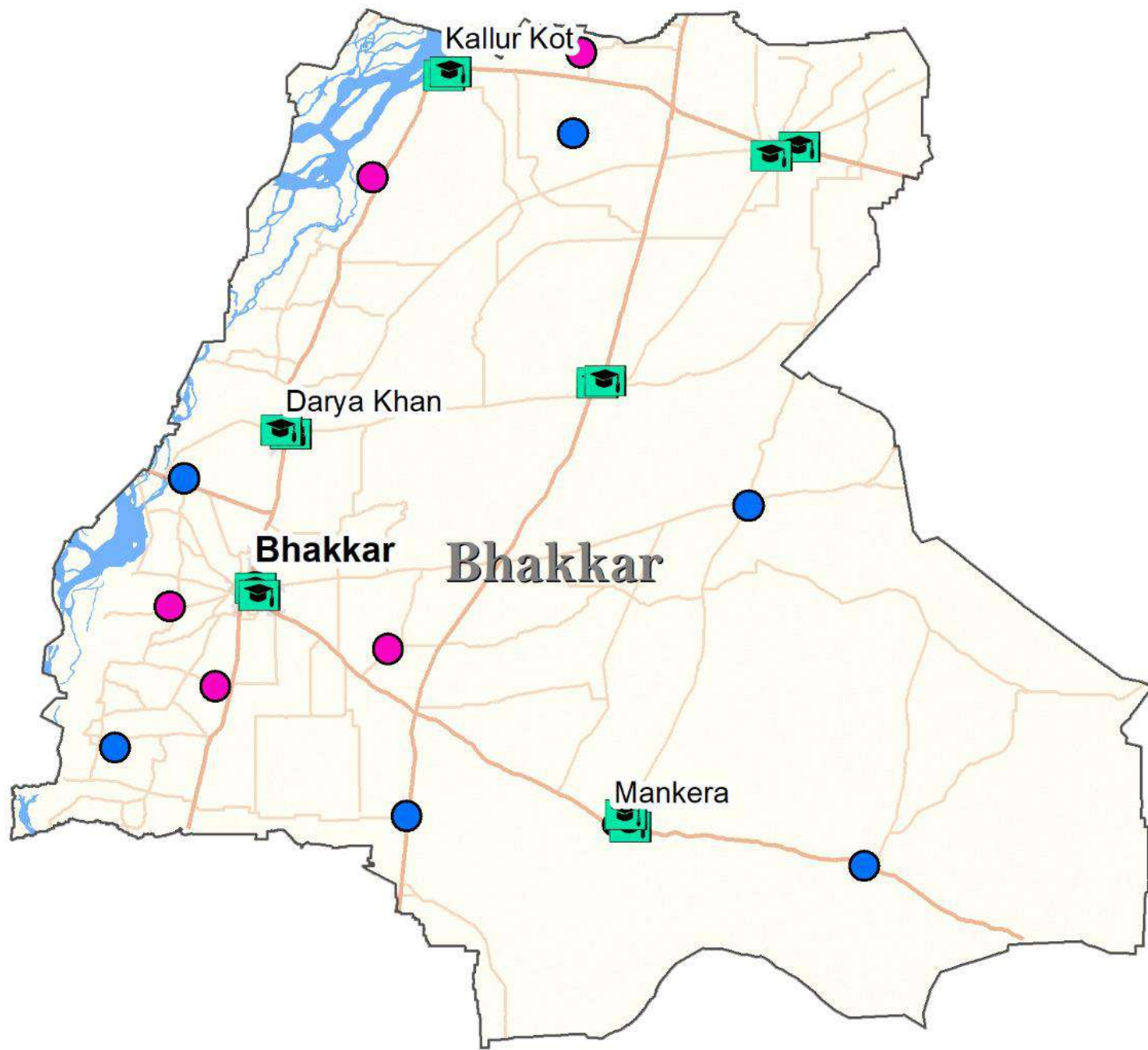


Figure 7: Spatial spread of High Sec. Schools & Intermediate colleges - Bhakkar district

DISTRICT KHUSHAB



Map of District Khushab

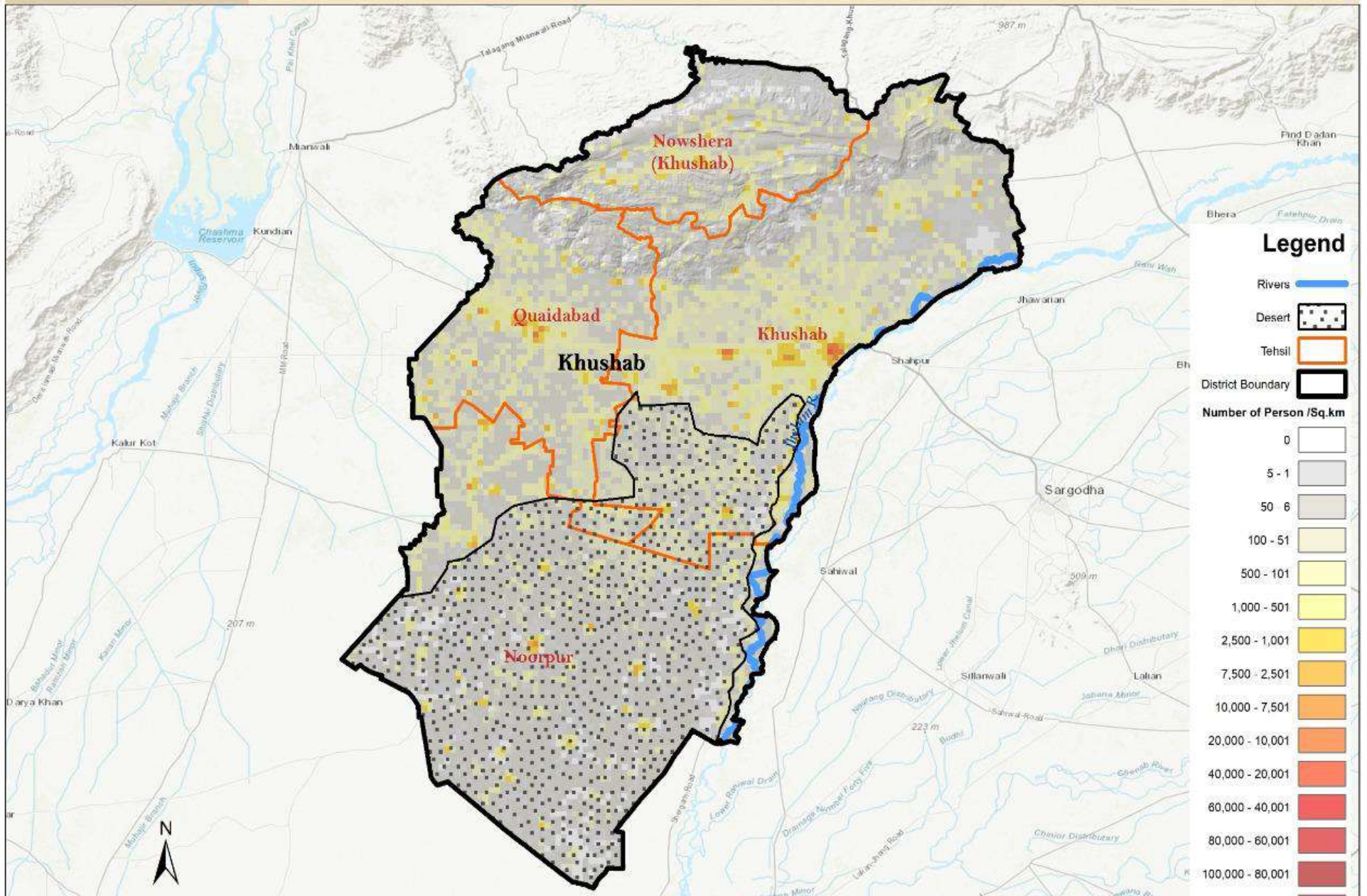


Figure 8: Spatial representation of Area and Population statistics- Khushab district

Khushab District

Table 15: Area and Population statistics

Administrative Unit	Area (Sq. Km.)	All Sexes	Sex Ratio	Population Density Per Sq. Km.	Urban Proportion
Khushab Tehsil	2,115	690,157	99.87	326.32	43.18
Noorpur Tehsil	2,500	242,831	100.82	97.13	8.15
Nowshera Tehsil	816	117,356	91.84	143.82	11.72
Quaidabad Tehsil	1,080	230,028	99.25	212.99	9.31
Khushab District	6,511	1,280,372	99.17	196.65	27.57

This particular district is marked with:

Low Population Density: The numbers indicate that about 95-325 persons are living per square km, at each tehsil level.

Small Urban Proportion: Overall urbanization in this district is low. With Noorpur Thal showing least urban proportion and Khushab, indicating highest.

Comparable Sex Ratio: Sex ratio indicates that for every 100 female, there are about 99-100 males, at each tehsil level.

School Education

Primary Schools

(a) Physical Analysis

There are 782 Primary schools in Mianwali district, with 265 female and 410 male schools. The overall accessibility of Primary schools in this region is quite satisfactory, as on average 5 schools are located to cater for 1000 primary school-age going children.

Table 16: Total Male & Female Primary schools in Khushab district

District/ Gender	Total schools	Total facilities/ 1000 people (5-9 years)
Khushab	782	5
Female	265	
Male	410	

Table 17: Total Male & Female Primary schools in Khushab district (Tehsil wise)

Tehsil/Gender	Total Schools
Khushab	331
Female	128
Male	203
Naushera	87
Female	43
Male	44
Noorpur Thal	189
Female	67
Male	122
Quaidabad	130
Female	41
Male	89

(b) Infrastructural Analysis

The provision of most infrastructural facilities is satisfactory in the division. However, playground and library are mostly missing in most of the schools; along with electricity in a few schools. Additionally, in Primary schools the issue of overcrowded classrooms is quite prevalent, hence students are accommodated in open-air/shelter-less classrooms due to a high shortage of classrooms. Furthermore, Dangerous classrooms are also quite high in number.

Table 18: Primary schools Infrastructural Assessment

Primary Schools	Availability of Boundary wall	Availability of Electricity	Availability of Drinking water	Availability of usable Toilets	Availability of Playground
737	727	722	736	2018	406
Gap Analysis					
Total Open-Air Classrooms	Total Dangerous classrooms		Primary schools without a proper library		
1725	46		674		

(c) Spatial Analysis

In Khushab, Primary school accessibility is fairly satisfactory throughout the district. They are densely spread in Khushab and nearby peripheral localities. However, in tehsil Noorpur Thal they relatively thinly spread.

Following figure shows the spatial spread of Primary schools in Khuhsab Blue dots represent male schools, while pink dots represent female schools.

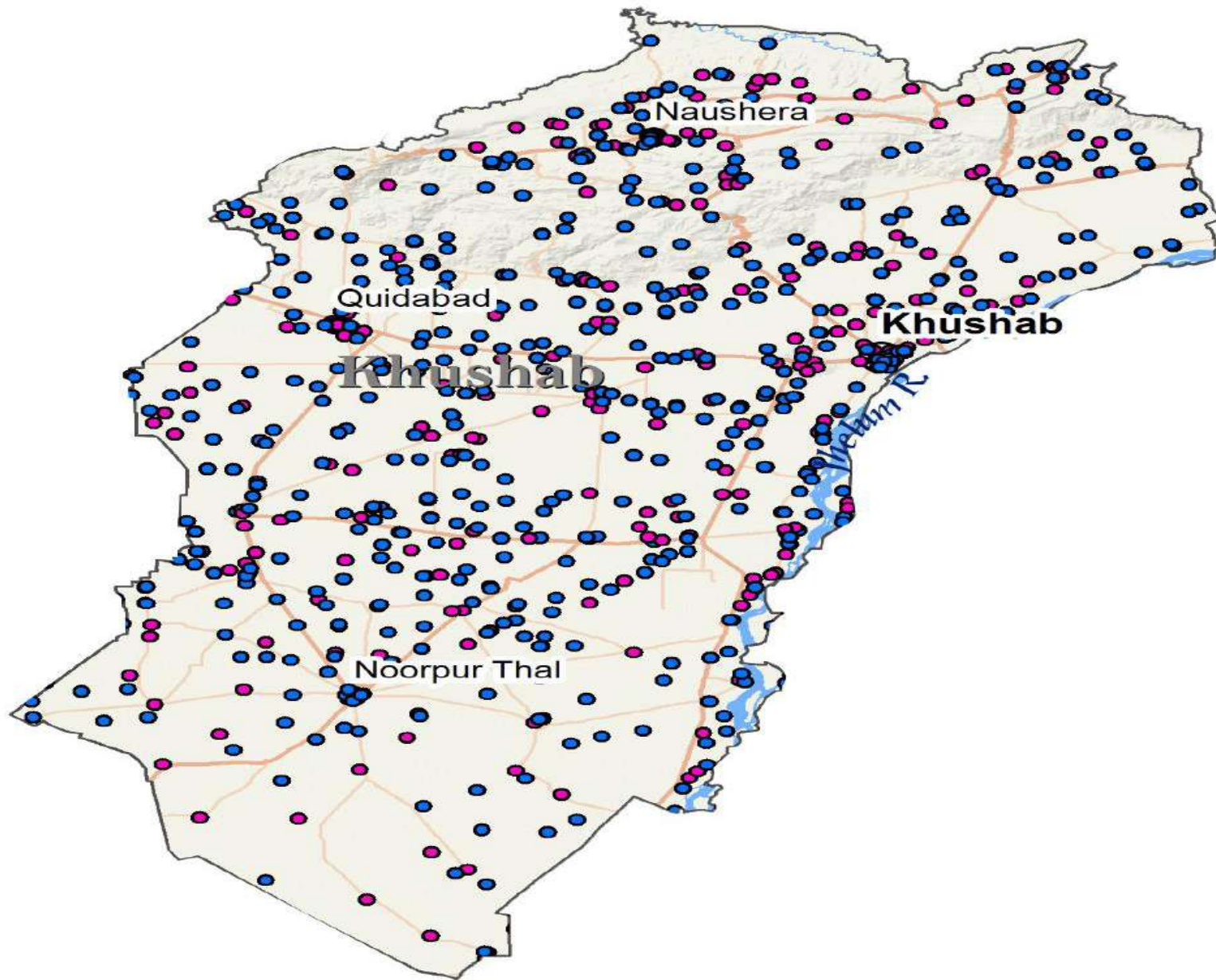


Figure 9: Spatial spread of Primary Schools - Khushab district

Middle Schools

(a) Physical Analysis

There are 199 Middle schools in Bhakkar district, with 104 Female and 95 Male schools, on average. There Middle schools in this area are quite few on average, as there is not even one school for 1000 middle school age going children.

Table 19: Total Male & Female Middle schools in Khushab district

District/ Gender	Total schools	Total facilities/1000 people (10-12 years)
Khushab	111	0.5
Female	40	
Male	71	

Table 20: Total Male & Female Middle schools in Khushab district (Tehsil wise)

Tehsil/Gender	Total Schools
Khushab	53
Female	23
Male	30
Naushera	13
Female	4
Male	9
Noorpur Thal	25
Female	9
Male	16
Quaidabad	37
Female	16

Tehsil/Gender	Total Schools
Male	21

(b) Infrastructural Analysis

While most Middle schools have basic facilities like boundary wall, electricity, drinking water and toilets, Playgrounds are missing in most schools. Furthermore, there is a huge shortage of IT labs and libraries in these schools, along-with unavailability of classrooms. Over 90% of Middle schools are without IT labs.

Table 21: Middle Schools Infrastructural Assessment

Middle Schools	Availability of Boundary wall	Availability of Electricity	Availability of Drinking water	Availability of usable Toilets	Availability of Playground
128	128	128	128	701	95
Gap Analysis					
Total Open-Air Classrooms	Total Dangerous classrooms	Middle schools without a proper library	Middle schools without IT labs		
172	28	55	100		

(c) Spatial Analysis

In Khushab, Middle schools are thinly spread. They are mostly clustered in Tehsils Quaibdabad and Khushab, followed by Naushera and Noorpur Thal. In the former two tehsils, for every 1 male school, there is one female school available. However, in the latter two tehsils the accessibility of female school drops down to almost half, as for every two male schools there is one female school available.

Following figure shows the spatial spread of Middle schools in Khuhsab Blue dots represent male schools, while pink dots represent female schools.

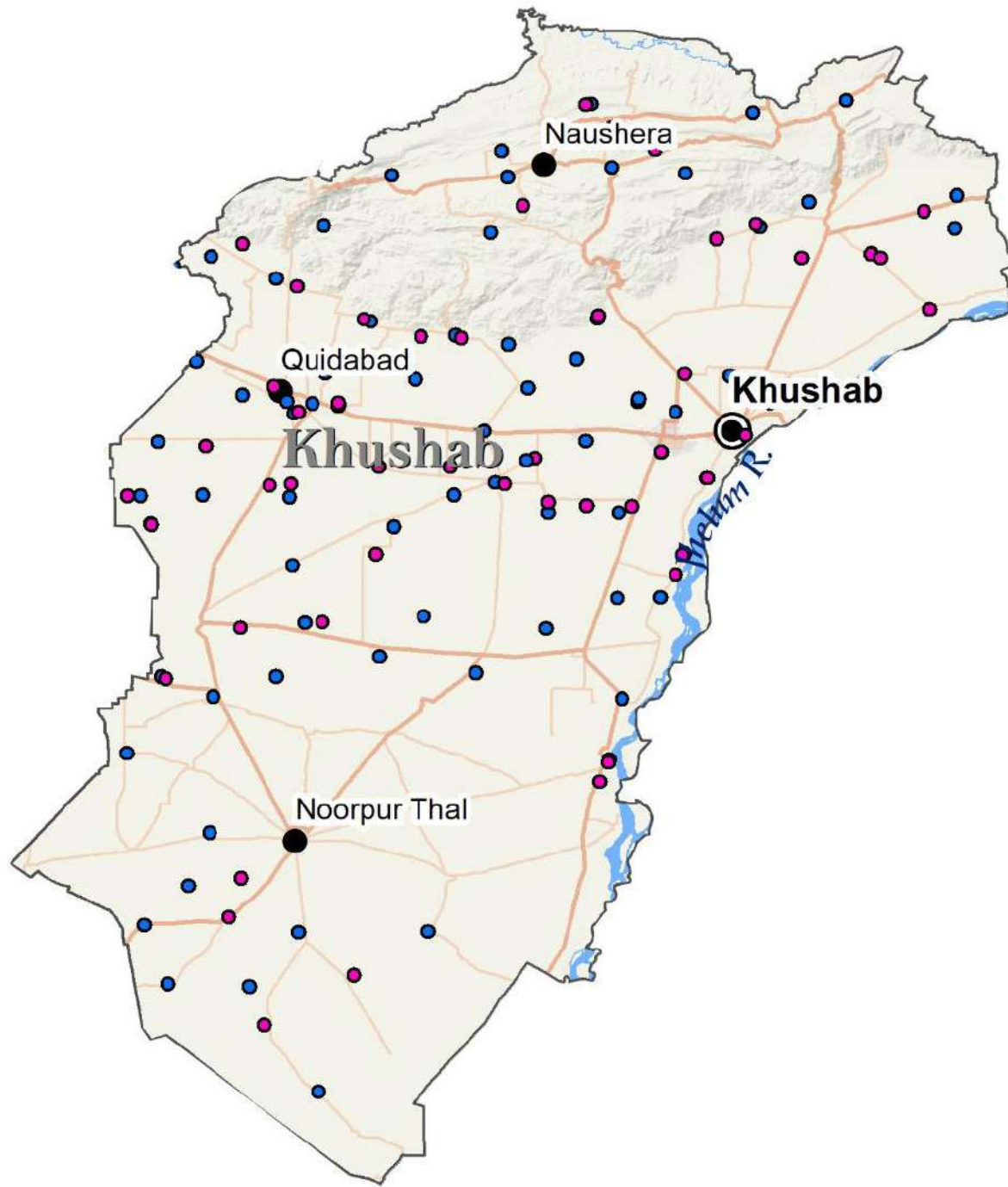


Figure 10: Spatial spread of Middle Schools - Khushab district

High Schools

(a) Physical Analysis

There are over 148 High schools in the entire district, with 69 Female and 79 Male schools. On average, in the entire district there are approximately 2 schools available at this level to cater to 1000 High school-going age population.

Table 22: Total Male & Female High schools in Khushab district

District/ Gender	Total schools	Total facilities/1000 people (13-14 years)
Khushab	148	2.5
Female	69	
Male	79	

Table 23: Total Male & Female High schools in Khushab district (Tehsil wise)

Tehsil/Gender	Total Schools
Khushab	47
Female	24
Male	23
Naushera	23
Female	10
Male	13
Noorpur Thal	36
Female	15
Male	21
Quaidabad	17
Female	5
Male	12

(b) Infrastructural Analysis

High Schools in this district are mostly well provisioned with basic infrastructural facilities, compared with facilities at lower level, However, there continues to be a shortage of Science labs, libraries, playgrounds and classrooms. This is reflected in a high number of Dangerous and Open-air classrooms. Over, 40% of High schools do not have Science labs.

(c) Spatial Analysis

High Schools in district Khushab are thinly spread and their accessibility is low. These schools are mostly clustered in tehsils Khushab, Naushera and Quaidabad with female accessibility being comparatively lower than male accessibility.

Following figure shows the spatial spread of High schools in Khuhsab Blue dots represent male schools, while pink dots represent female schools.

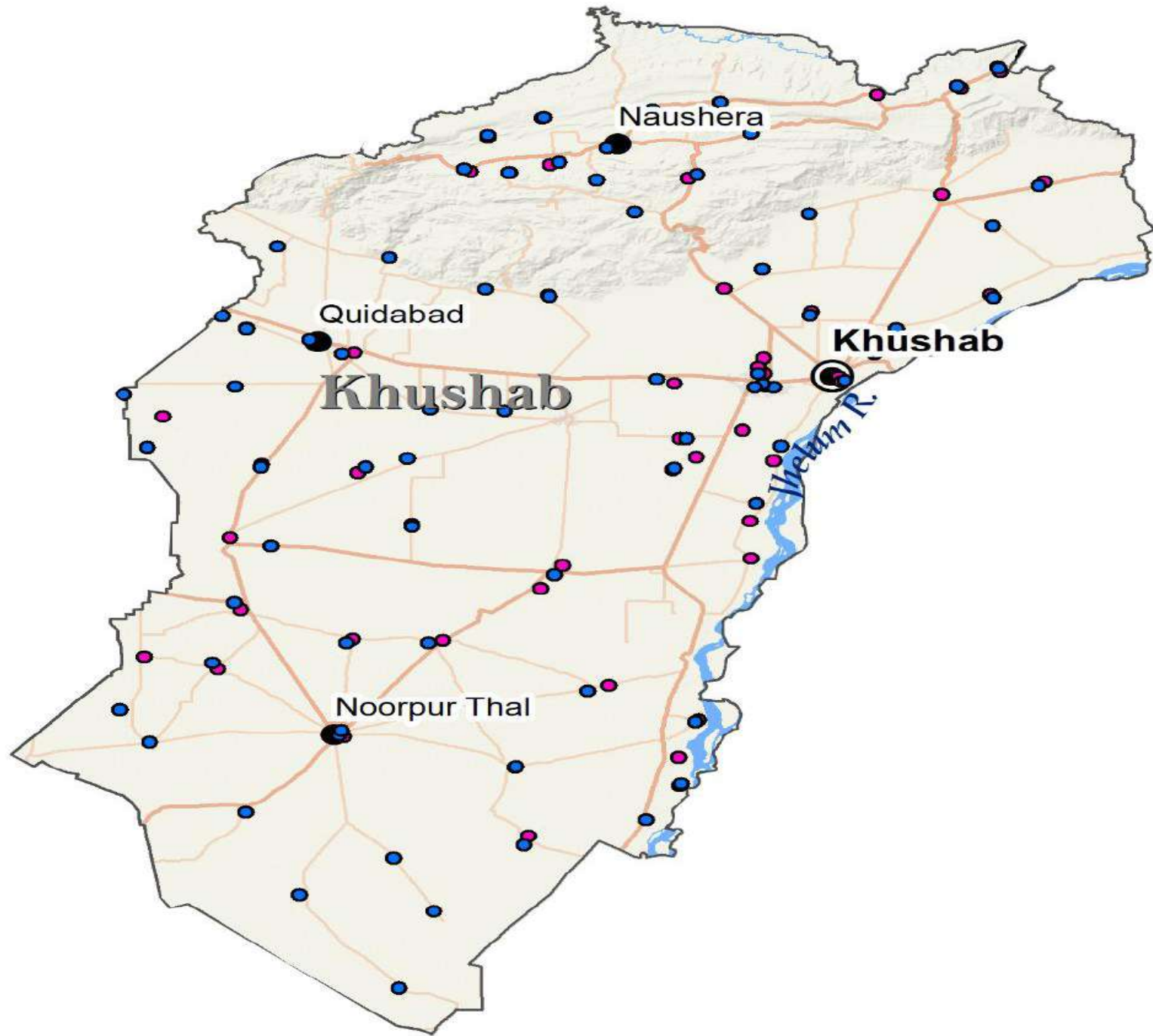


Figure 11: Spatial spread of High Schools - Khushab district

Table 24: High Schools Infrastructural Assessment

High Schools	Availability of Boundary wall	Availability of Electricity	Availability of Drinking water	Availability of usable Toilets	Availability of Playground
123	123	122	123	1055	70
Gap Analysis					
Total Open-Air Classrooms	Total Dangerous classrooms	High schools without a proper library	High schools without IT labs	High schools without Science labs	
149	42	104	11	50	

Higher Secondary Schools & Colleges

(a) Physical Analysis

There are 13 Higher Secondary schools in district Bhakkar. Their proportion is significantly low, as on average there is not even a single facility for 1000 school going age population at this level. Additionally, there are 11 Intermediate colleges in the entire district, of which 5 are Male colleges and 6 are Female colleges.

Table 25: Total Male & Female Higher Sec. schools & Intermediate colleges in Khushab district

District/ Gender	Total schools	Total Intermediate Colleges	Total facilities/1000 people (15-16 years)
Khushab	13	11	0.3
Male	7	5	
Female	6	6	

Table 26: Total Male & Female Higher Sec. schools & Intermediate colleges in Khushab district (Tehsil wise)

Tehsil/Gender	Total Schools
Khushab	10
Female	4
Male	6
Naushera	1

Tehsil/Gender	Total Schools
Female	1
Male	0
Noorpur Thal	1
Female	0
Male	1
Quaidabad	1
Female	1
Male	0

(d) Infrastructural Analysis

Across various infrastructural parameters, Higher Secondary schools perform relatively better than schools at lower levels. However, the problem of Dangerous classrooms and shelter-less classrooms is prevalent in Higher Secondary schools of this district.

Table 27: Higher Sec. Schools Infrastructural Assessment

Higher Secondary Schools	Availability of Boundary wall	Availability of Electricity	Availability of Drinking water	Availability of usable Toilets	Availability of Playground
13	13	13	13	220	11
Gap Analysis					
Total Open-Air Classrooms	Total Dangerous classrooms	High Sec. schools without a proper library	High Sec. schools without IT labs	High Sec. schools without Science labs	
10	23	0	0	1	

(c) Spatial Analysis

The accessibility of Higher Secondary schools and Intermediate colleges is fairly unsatisfactory in the district, with female accessibility being even poor. Following figure shows the spatial spread of Higher Secondary schools and Intermediate colleges schools in Khusab Blue dots represent male schools, while pink dots represent female schools and green badges show intermediate colleges.

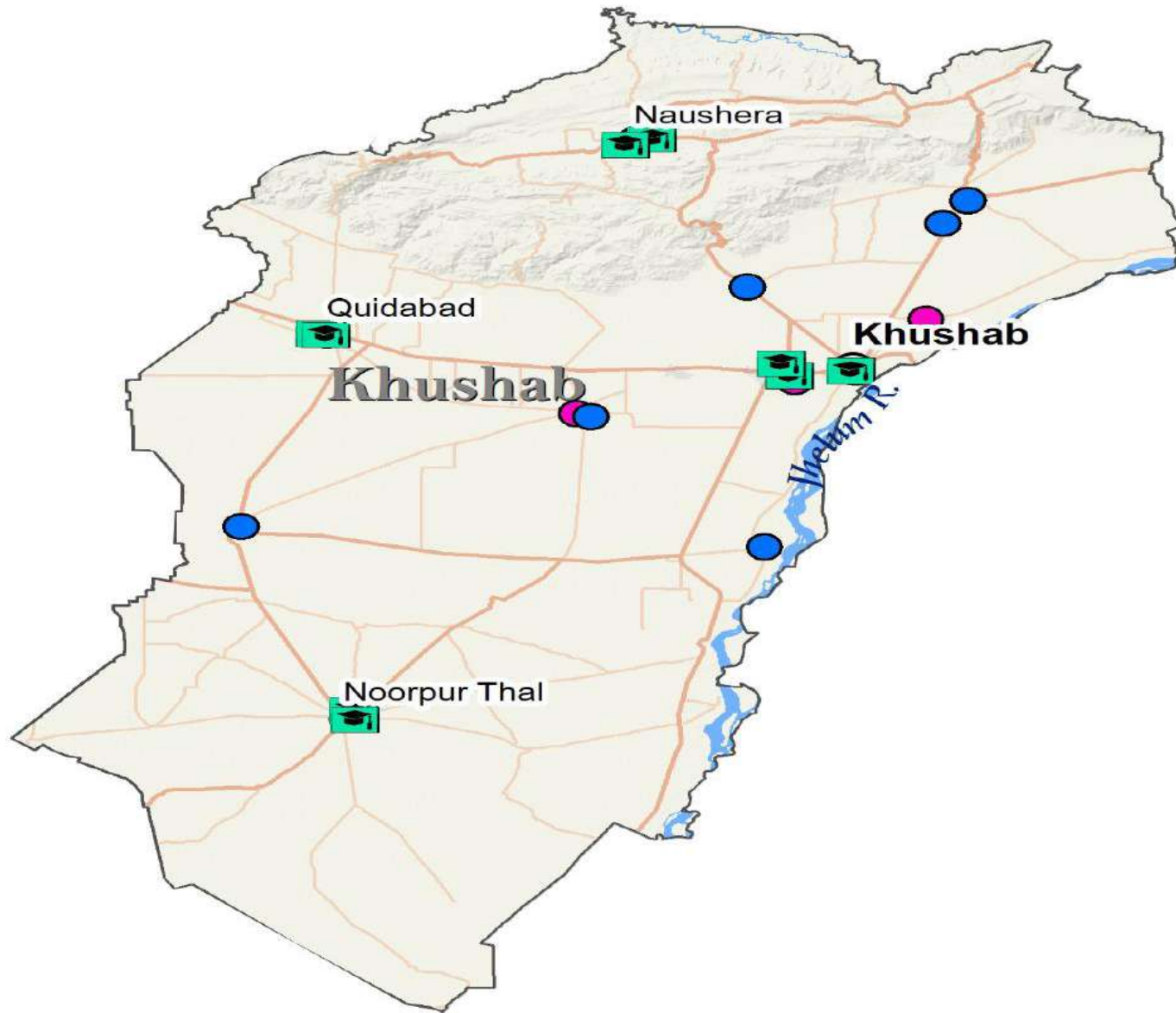


Figure 12: Spatial spread of Higher Sec Schools & Intermediate colleges - Khushab district

DISTRICT MIANWALI



Map of District Mianwali

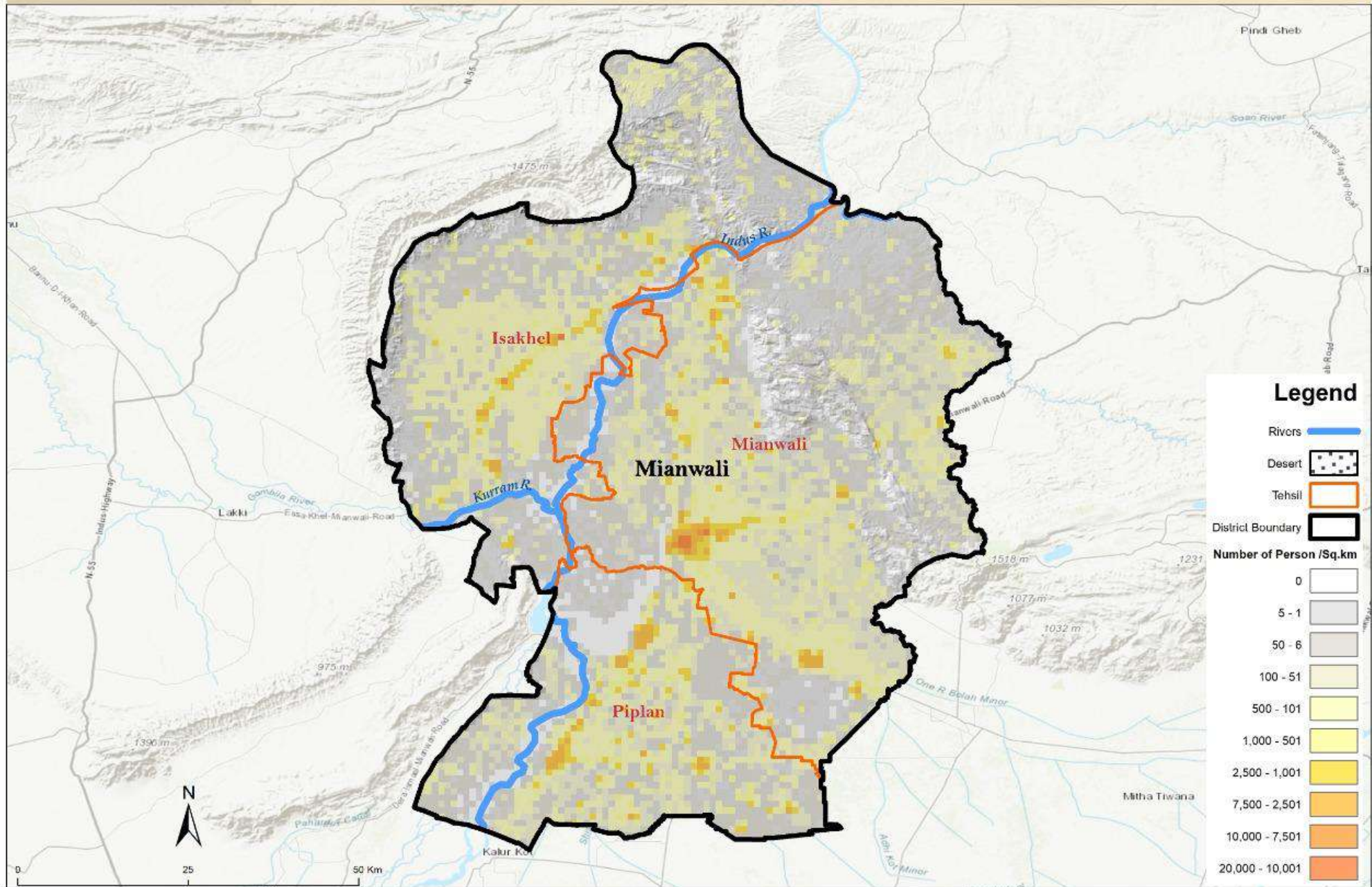


Figure 13: Spatial representation of Area and Population statistics - Mianwali district

Mianwali District

Table 28: Area and Population statistics

Administrative - Unit	Area (Sq. Km.)	All Sexes	Sex Ratio	Population Density Per Sq. Km.	Urban Proportion	Average Household Size
Isakhel Tehsil	1,863	374,194	96.11	200.86	22.60	6.77
Mianwali Tehsil	2,689	766,357	100.86	285.00	19.24	6.22
Piplan Tehsil	1,288	402,050	102.83	312.15	23.84	6.45
Mianwali District	5,840	1,542,601	100.19	264.14	21.25	6.41

This particular district is marked with:

Low Population Density: The numbers indicate that about 200-300 persons are living per square km, at each tehsil level.

Small Urban Proportion: Overall urbanization in this district is low. With Mianwali showing least urban proportion and Piplan indicating highest.

Comparable Sex Ratio: Sex ratio indicates that for every 100 female, there are about 96-100 males, at each tehsil level.

School Education

Primary Schools

(a) Physical Analysis

There are 989 Primary schools in Mianwali district, with 602 female and 387 male schools. The overall accessibility of Primary schools in this region is quite satisfactory, as on average 5 schools are located to cater for 1000 primary school-age going children.

Table 29: Total Male & Female Primary schools in Mianwali district

District/ Gender	Total schools	Total facilities/ 1000 people (5-9 years)
Mianwali	989	5
Female	602	
Male	387	

Table 30: Total Male & Female Primary schools in Mianwali district (Tehsilwise)

Tehsil/Gender	Total Schools
Isa Khel	286
Female	174
Male	112
Mianwali	498
Female	303
Male	195
Piplan	205
Female	125
Male	80

(b) Infrastructural Analysis

The provision of most infrastructural facilities is satisfactory in the division. However, playground and library are mostly missing in most of the schools; along with electricity in a few schools. Additionally, in Primary schools the issue of overcrowded classrooms is quite prevalent, hence students are accommodated in open-air/shelter-less classrooms due to a high shortage of classrooms. Furthermore, Dangerous classrooms are also quite high in number.

Table 31: Primary schools Infrastructural assessment

Primary Schools	Availability of Boundary wall	Availability of Electricity	Availability of Drinking water	Availability of usable Toilets	Availability of Playground
989	977	957	974	3044	556
Gap Analysis					
Total Open-Air Classrooms	Total Dangerous classrooms		Primary schools without a proper library		
1692	73		779		

(a) Spatial Analysis

Primary schools are quite densely spread in the entire district. On average, at this level both female and male accessibility is satisfactory.

Following figure shows the spatial spread of Primary schools in Mianwali. Blue dots represent male schools, while pink dots represent female schools.

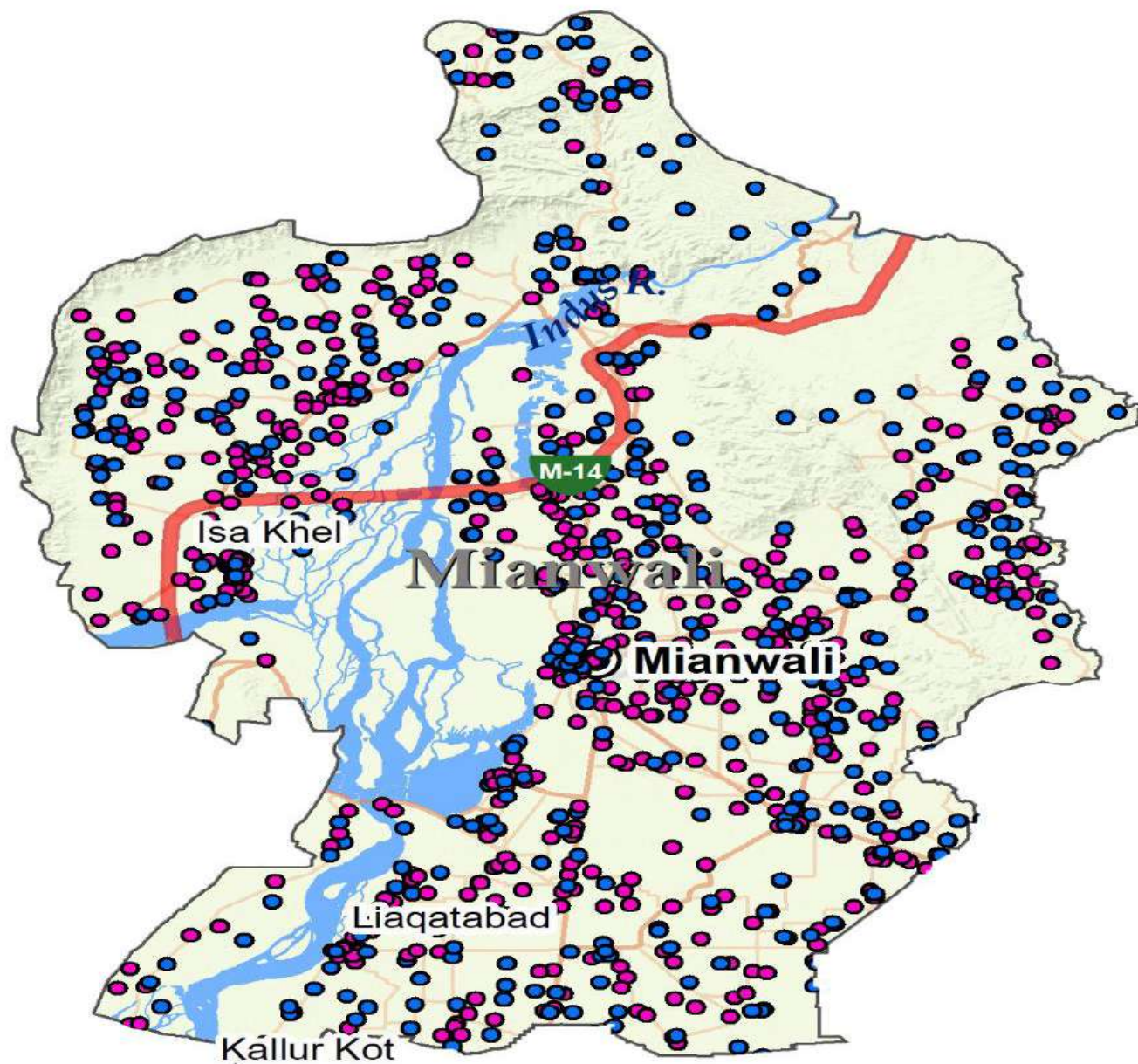


Figure 14: Spatial spread of Primary Schools - Mianwali district

Middle Schools

(a) Physical Analysis

There are 162 Middle schools in Mianwali district, with 70 Female and 92 Male schools, on average. As far the school spread is concerned, there is approximately one Middle school on average for 1000 middle school age going children.

Table 32: Total Male & Female Middle schools in Mianwali district

District/ Gender	Total schools	Total facilities/1000 people (10-12 years)
Mianwali	162	1.5
Female	70	
Male	92	

Table 33: Total Male & Female Middle schools in Mianwali district (Tehsil wise)

Tehsil/Gender	Total Schools
Isa Khel	34
Female	14
Male	20
Mianwali	85
Female	34
Male	51
Piplan	43
Female	22
Male	21

(c) Infrastructural Analysis

While most Middle schools have basic facilities like boundary wall, electricity, drinking water and toilets, Playgrounds are missing in most schools. Furthermore, there is a huge shortage of IT labs (88% Middle schools are without IT labs) and libraries in these schools, along-with unavailability of classrooms.

Table 34: Middle schools Infrastructural Assessment

Middle Schools	Availability of Boundary wall	Availability of Electricity	Availability of Drinking water	Availability of usable Toilets	Availability of Playground
162	161	161	162	937	111
Gap Analysis					
Total Open-Air Classrooms		Total Dangerous classrooms	Middle schools without a proper library	Middle schools without IT labs	
222		17	58	144	

(d) Spatial Analysis

The spread of Middle schools in the district is satisfactory in tehsils Mianwali and Liaqatabad followed by Isa khel. In Isa khel, female school accessibility is really low, on average there is 1 female school for every three male schools.

Following figure shows the spatial spread of Middle schools in Mianwali. Blue dots represent male schools, while pink dots represent female schools.

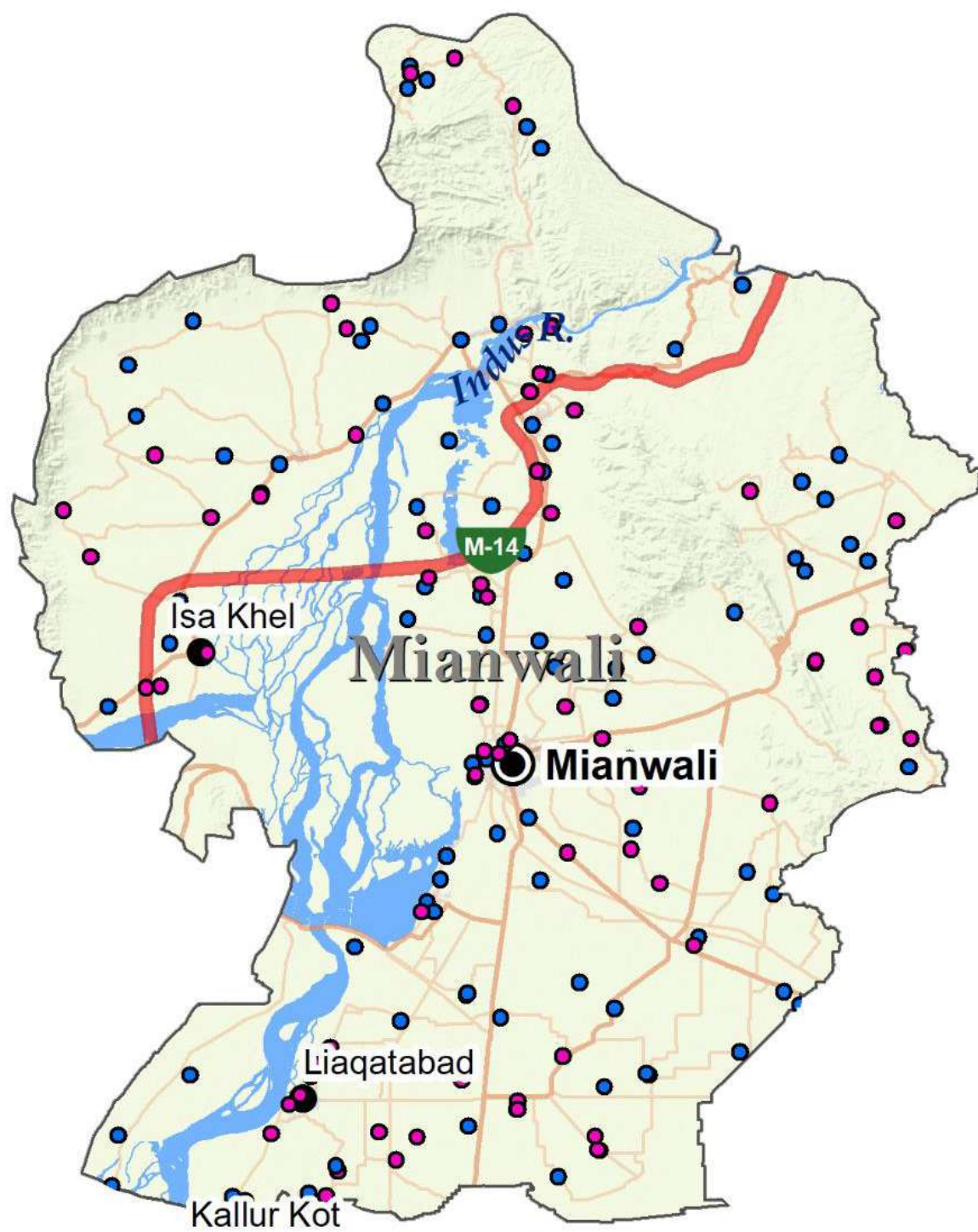


Figure 15: Spatial spread of Middle schools - Mianwali district

High Schools

(a) Physical Analysis

There are over 130 High schools in the entire district, with 49 Female and 81 Male schools. On average, in the entire district there are approximately 2 schools available at this level to cater to 1000 High school-going age population.

Table 35: Total Male & Female High schools in Mianwali district

District/ Gender	Total schools	Total facilities/1000 people (13-14 years)
Mianwali	130	2
Female	49	
Male	81	

Table 36: Total Male & Female High schools in Mianwali district (Tehsil wise)

Tehsil/Gender	Total Schools
Isa Khel	34
Female	8
Male	26
Mianwali	59
Female	23
Male	36
Piplan	37
Female	18
Male	19

(b) Infrastructural Analysis

High Schools in this district are mostly well provisioned with basic infrastructural facilities, compared with facilities at lower level, However, there continues to be a shortage of Science labs (55% High schools are without them), libraries, playgrounds and classrooms. This is reflected in a high number of Dangerous and Open-air classrooms.

Table 37: High Schools Infrastructural Assessment

High Schools	Availability of Boundary wall	Availability of Electricity	Availability of Drinking water	Availability of usable Toilets	Availability of Playground
130	130	129	129	1310	93
Gap Analysis					
Total Open-Air Classrooms	Total Dangerous classrooms	High schools without a proper library	High schools without IT labs	High schools without Science labs	
140	46	96	4	72	

(c) Spatial Analysis

The spread of High schools in the district is satisfactory in tehsils Mianwali and Liaqatabad followed by Isa khel. In all the three tehsils, female accessibility of High schools is really poor with 1 female school available for 2-3 male high schools.

Following figure shows the spatial spread of High schools in Mianwali. Blue dots represent male schools, while pink dots represent female schools.

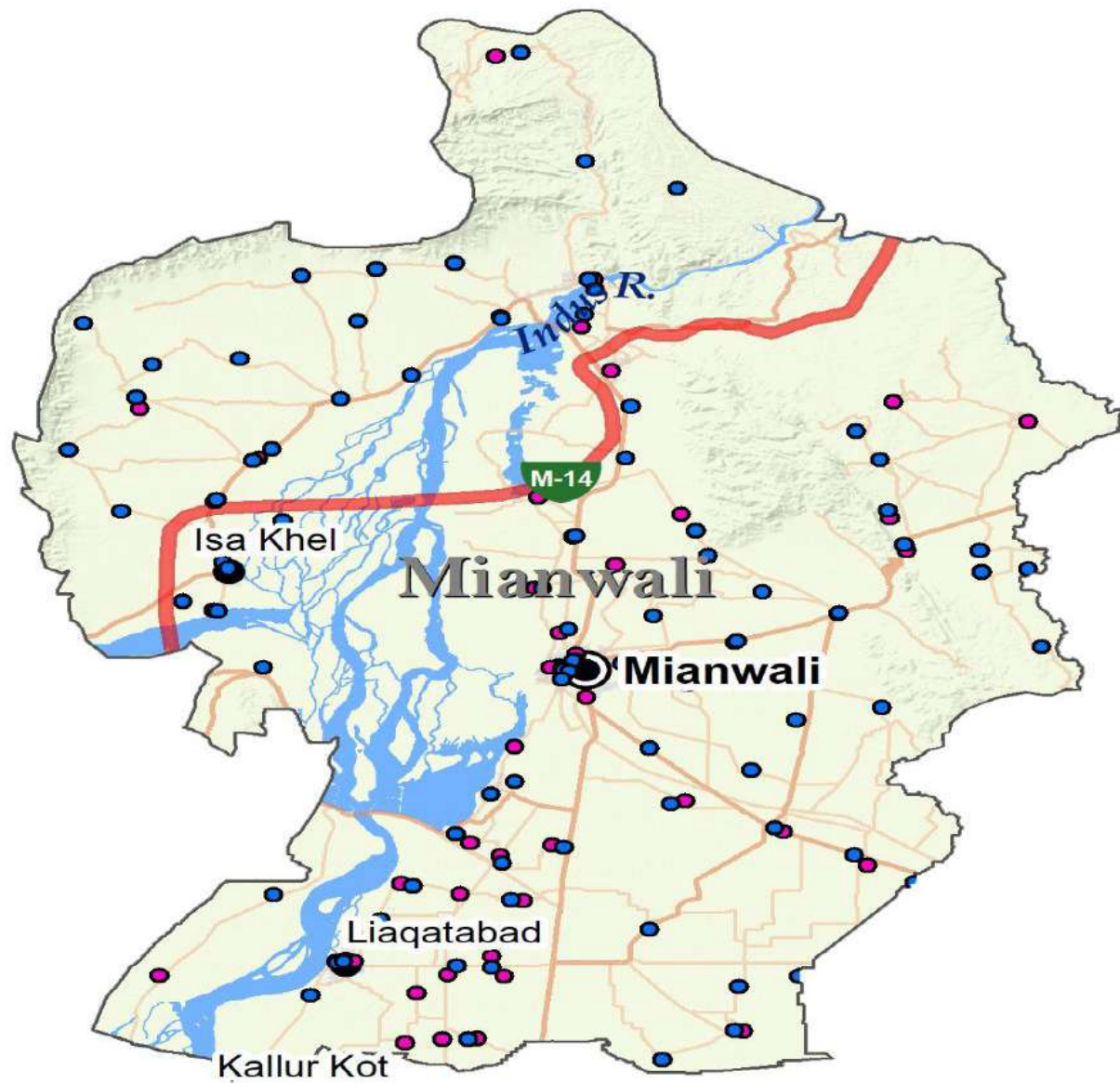


Figure 16: Spatial spread of High Schools - Mianwali district

Higher Secondary Schools & Colleges

(d) Physical Analysis

There are 15 Higher Secondary schools in district Bhakkar. Their proportion is significantly low, as on average there is not even a single facility for 1000 school going age population at this level. Additionally, there are 15 Intermediate colleges in the entire district, of which 6 are Male colleges and 9 are Female colleges.

Table 38: Total Male & Female Higher Secondary schools & Intermediate colleges in Mianwali district

District/ Gender	Total schools	Total Intermediate Colleges	Total facilities/1000 people (15-16 years)
Mianwali	15	15	0.3
Male	10	9	
Female	5	6	

Table 39: Table 38: Total Male & Female Higher Secondary schools & Intermediate colleges in Mianwali district (Tehsil wise)

Tehsil/Gender	Total Schools
Isa Khel	3
Female	1
Male	2
Mianwali	8
Female	2
Male	6
Piplan	4
Female	2
Male	2

(e) Infrastructural Analysis

Across various infrastructural parameters, Higher Secondary schools perform relatively better than schools at lower levels. However, the problem of shelter-less classrooms is prevalent in Higher Secondary schools of this district.

Table 40: Higher Secondary schools Infrastructural Assessment

Higher Secondary Schools	Availability of Boundary wall	Availability of Electricity	Availability of Drinking water	Availability of usable Toilets	Availability of Playground
15	15	15	15	190	11
Gap Analysis					
Total Open-Air Classrooms	Total Dangerous classrooms	High Sec. schools without a proper library	High Sec. schools without IT labs	High Sec. schools without Science labs	
10	1	1	0	3	

(d) Spatial Analysis

The spread of Higher Secondary schools and Intermediate colleges in the district is quite poor, with female accessibility lagging even further behind.

Following figure shows the spatial spread of Higher Secondary schools and Intermediate colleges in Mianwali. Blue dots represent male schools, while pink dots represent female schools and green badges show Intermediate colleges.

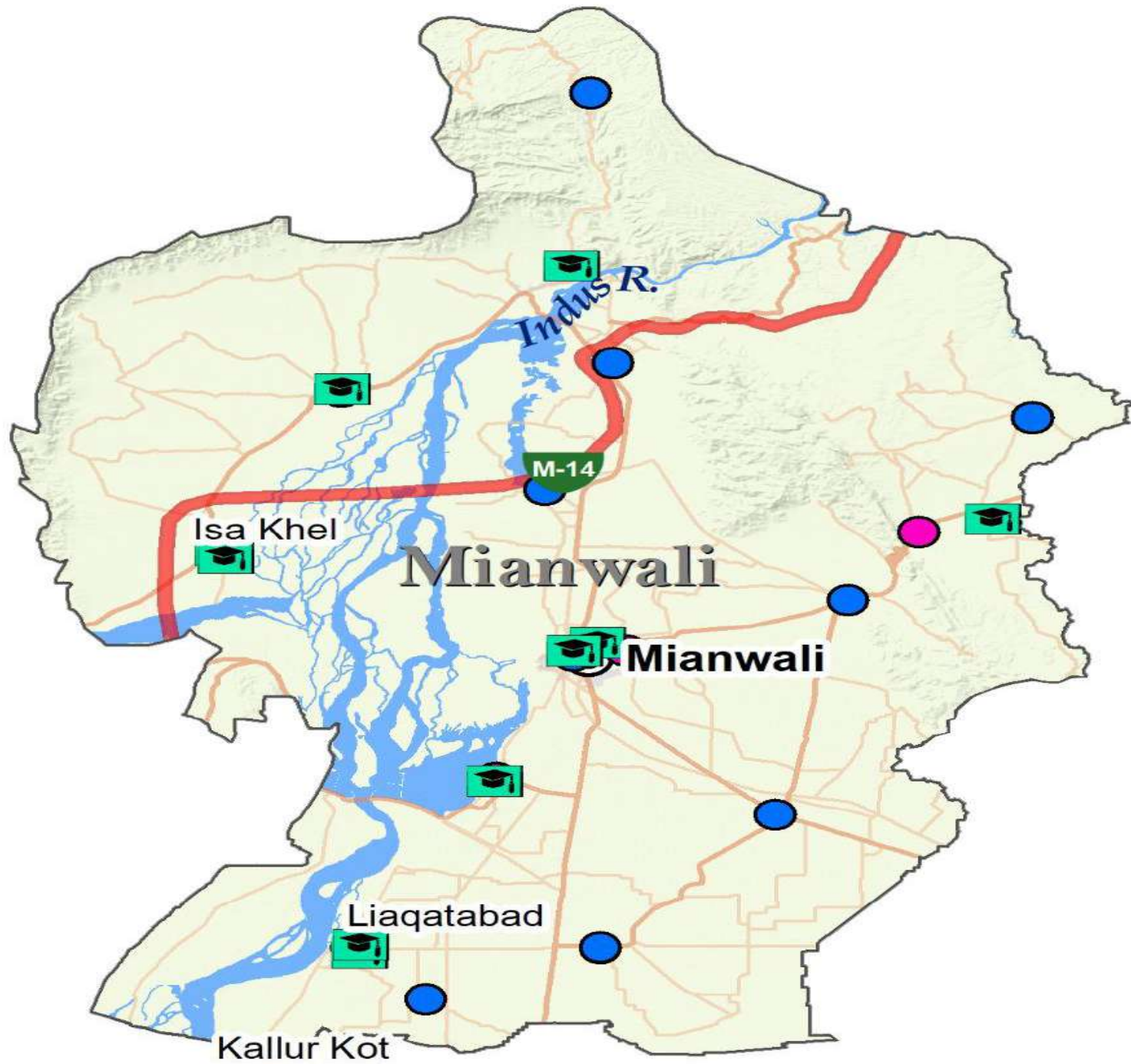


Figure 17: Spatial spread of High Sec. Schools & Intermediate Colleges - Mianwali district

Higher Education

Mianwali has two universities, University of Mianwali and Namal Institute.

Table 41: Universities in Mianwali district

Sr.No	University	Sector	Programs offered	Departments
1	University of Mianwali	Public	BS/MSc/MS/M.Phil. /Ph.D.	Sciences, Social sciences & Humanities
2	Namal Insitutute	Private	BS/MSc/MS/M.Phil. /Ph.D.	Science & Engineering

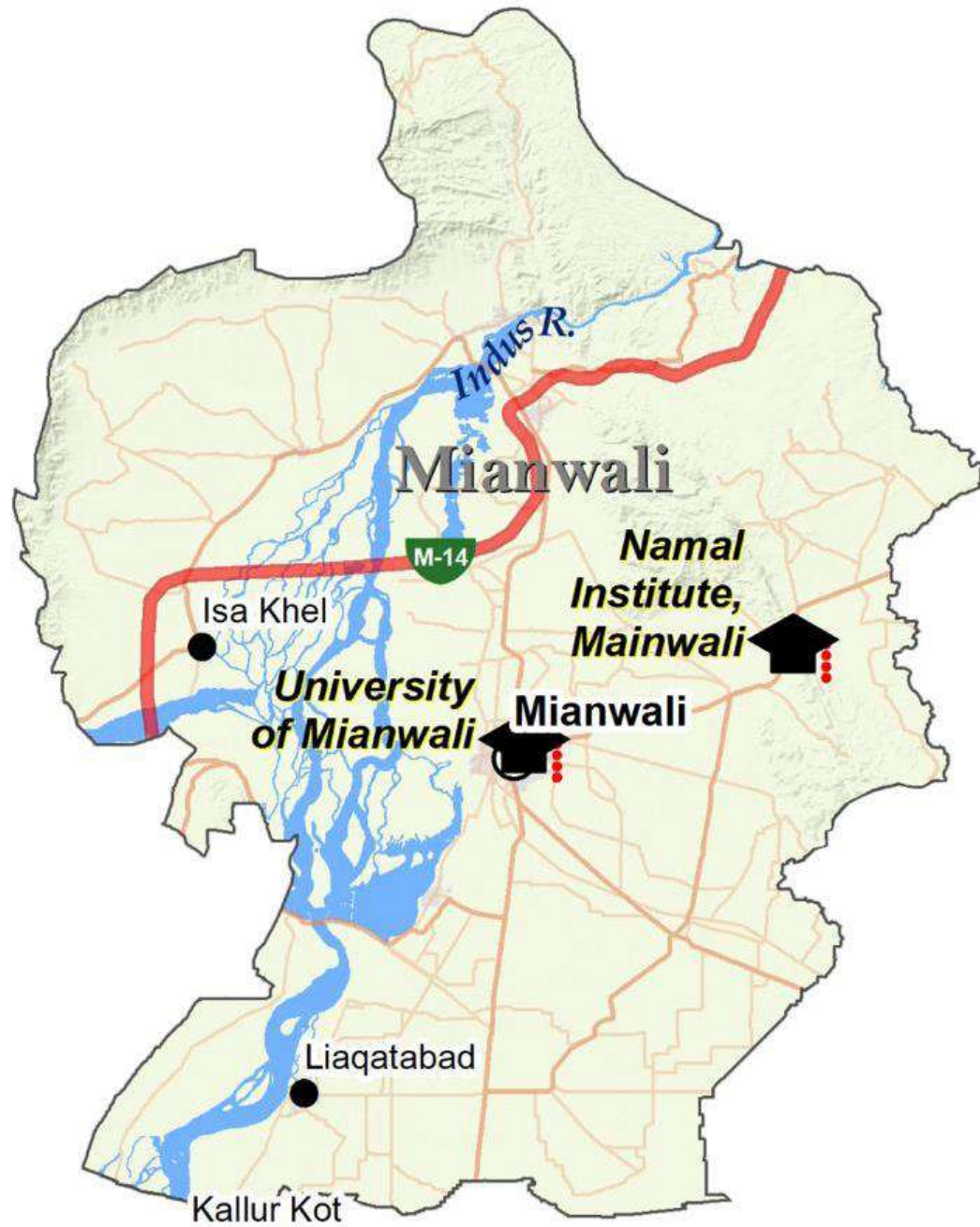


Figure 18: Spatial spread of universities - Mianwali district

DISTRICT SARGODHA



Map of District Sargodha

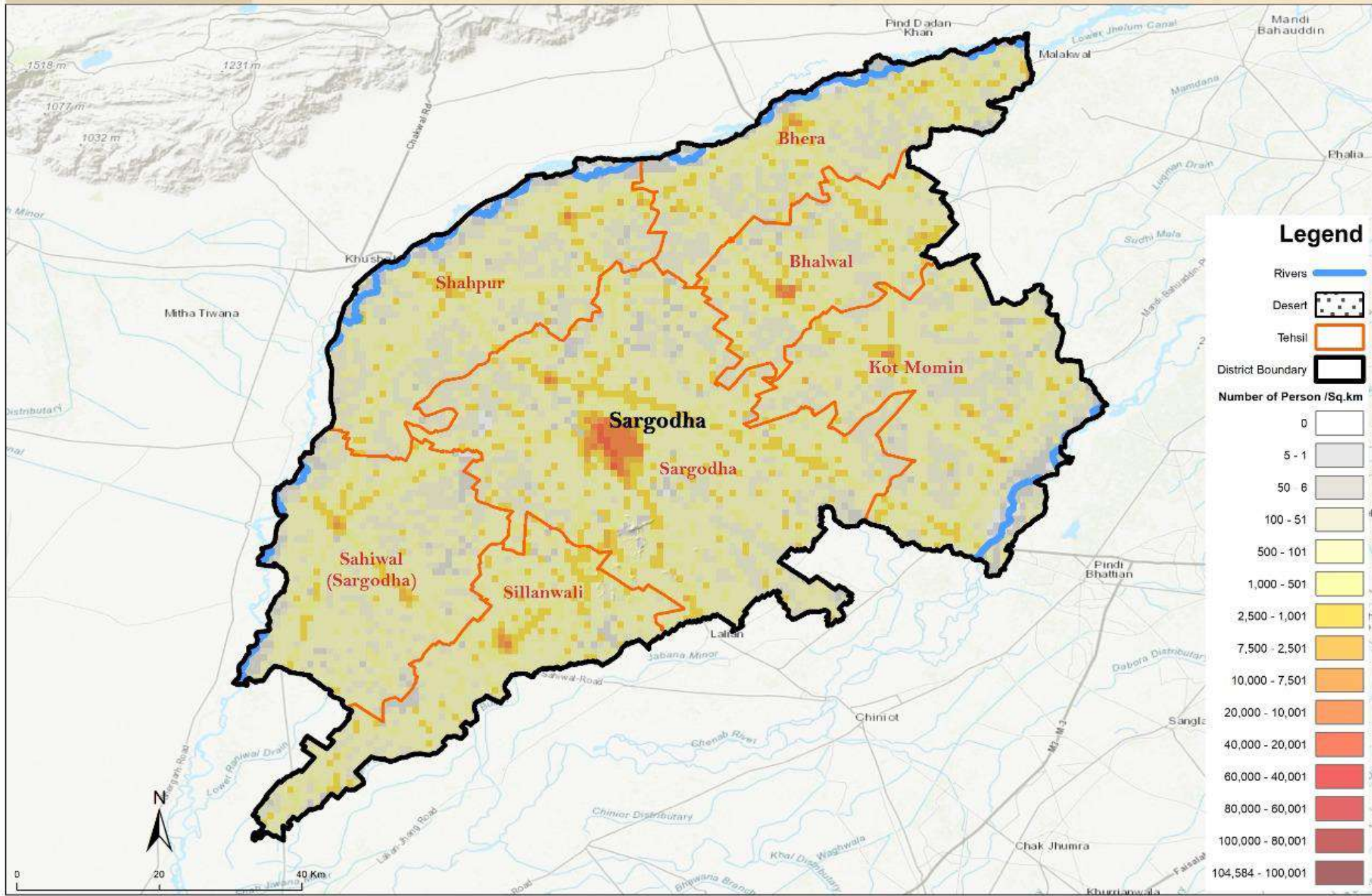


Figure 19: Spatial representation of Area and Population statistics - Sargodha district

Sargodha District

Table 42: Population and Area statistics

Administrative - Unit	Area (Sq. Km.)	All Sexes	Sex Ratio	Population Density Per Sq. Km.	Urban Proportion	Average Household Size
Bhalwal Tehsil	663	356,206	101.06	537.26	34.24	5.57
Bhera Tehsil	504	314,369	99.27	623.75	19.07	5.89
Kot Momin Tehsil	948	451,978	103.86	476.77	14.49	6.41
Sahiwal Tehsil	829	340,695	100.74	410.97	22.37	6.32
Sargodha Tehsil	1,536	1,535,152	103.19	999.45	42.88	6.23
Shahpur Tehsil	769	353,325	100.76	459.46	19.43	5.95
Sillanwali Tehsil	607	344,487	102.16	567.52	10.95	6.63
Sargodha District	5,856	3,696,212	102.17	631.18	29.44	6.17

This particular district is marked with:

Medium-High Population Density: The numbers indicate that on average 500-550 persons are living per square km, at each tehsil level. However, Sargodha Tehsil is an exception, having a high population density, as approximately 1000 persons are living per square km.

Small Urban Proportion: Overall urbanization in this district is low. With Silanwali showing least urban proportion and Sargodha indicating highest.

Comparable Sex Ratio: Sex ratio indicates that for every 100 females, there are about 100-103 males, at each tehsil level.

School Education

Primary Schools

(a) Physical Analysis

There are 1298 Primary schools in Mianwali district, with 665 female and 633 male schools. The overall accessibility of Primary schools in this region is relatively less satisfactory than other districts, as on average 3 schools are located to cater for 1000 primary school-age going children. This is due to high population density in this district.

Table 43: Total Male & Female Primary schools in Sargodha district

District/ Gender	Total schools	Total facilities/ 1000 people (5-9 years)
Sargodha	1,298	3
Female	665	
Male	633	

Table 44: Total Male & Female Primary schools in Sargodha district (Tehsil wise)

Tehsil/Gender	Total Schools
Bhalwal	143
Female	71
Male	72
Bhera	159
Female	83
Male	76
Kot Momin	189
Female	78
Male	111
Sahiwal	173

Tehsil/Gender	Total Schools
Female	89
Male	84
Sargodha	353
Female	200
Male	153
Shahpur	165
Female	90
Male	75
Sillanwali	116
Female	54
Male	62

(b) Infrastructural Analysis

The provision of most infrastructural facilities is satisfactory in the division. However, playgrounds and libraries (64% primary schools are without libraries) are mostly missing in most of the schools; along with electricity in a few schools. Additionally, in Primary schools the issue of overcrowded classrooms is quite prevalent, hence students are accommodated in open-air/shelter-less classrooms due to a high shortage of classrooms. Furthermore, Dangerous classrooms are also quite high in number.

Table 45: Primary Schools Infrastructural Assessment

Primary Schools	Availability of Boundary wall	Availability of Electricity	Availability of Drinking water	Availability of usable Toilets	Availability of Playground
1298	1269	1287	1298	4376	822
Gap Analysis					
Total Open-Air Classrooms	Total Dangerous classrooms		Primary schools without a proper library		
2411	114		837		

(c) Spatial Analysis

Primary schools in Sargodha are densely spread throughout the district. Additionally, female and male primary school accessibility is satisfactory. Following figure shows the spatial spread of Primary schools in Sargodha. Blue dots represent male schools, while pink dots represent female schools.

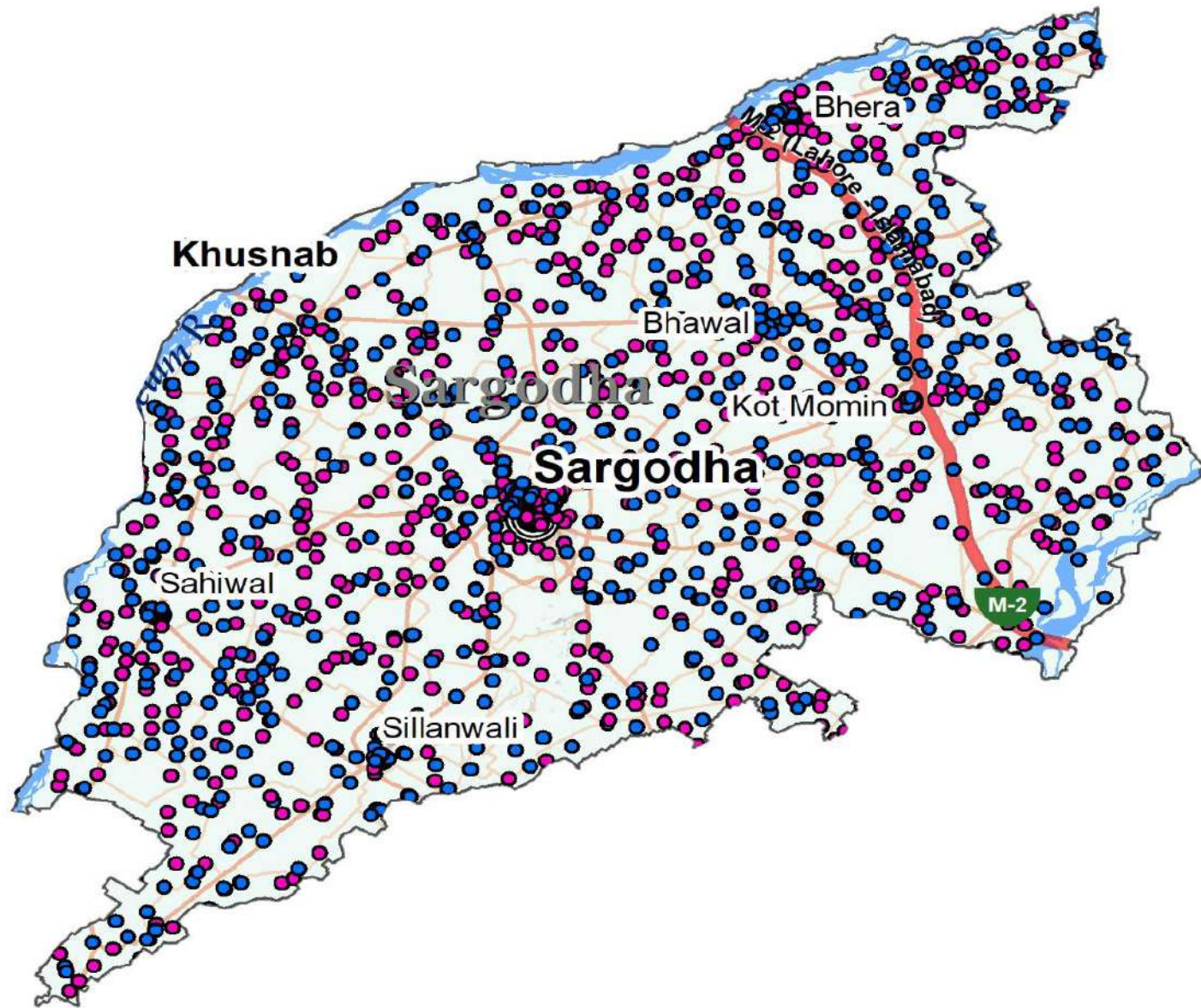


Figure 20: Spatial spread of Primary Schools Sargodha district

Middle Schools

(d) Physical Analysis

There are 365 Middle schools in Sargodha district, with 212 Female and 153 Male schools, on average. There is approximately one Middle school on average for 1000 middle school age going children

Table 46: Total Male & Female Middle schools in Sargodha district

District/ Gender	Total schools	Total facilities/ 1000 people (10-12 years)
Sargodha	365	1.5
Female	212	
Male	153	

Table 47: Total Male & Female Middle schools in Sargodha district (Tehsil wise)

Tehsil/Gender	Total Schools
Bhalwal	33
Female	24
Male	9
Bhera	26
Female	15
Male	11
Kot Momin	40
Female	19
Male	21
Sahiwal	32

Tehsil/Gender	Total Schools
Female	20
Male	12
Sargodha	141
Female	73
Male	68
Shahpur	36
Female	22
Male	14
Sillanwali	57
Female	39
Male	18

(e) Infrastructural Analysis

While most Middle schools have basic facilities like boundary wall, electricity, drinking water and toilets, Playgrounds are missing in most schools. Furthermore, there is a huge shortage of IT labs (83% Middle schools are without IT labs) and libraries in these schools, along-with unavailability of classrooms.

Table 48: Middle schools Infrastructural Assessment

Middle Schools	Availability of Boundary wall	Availability of Electricity	Availability of Drinking water	Availability of usable Toilets	Availability of Playground
365	364	365	363	2097	283
Gap Analysis					
Total Open-Air Classrooms	Total Dangerous classrooms	Middle schools without a proper library	Middle schools without IT labs		
449	65	139	305		

(c) Spatial Analysis

The overall spread of Middle schools in this district is satisfactory, along with male and female school accessibility.

Following figure shows the spatial spread of Middle schools in Sargodha. Blue dots represent male schools, while pink dots represent female schools.

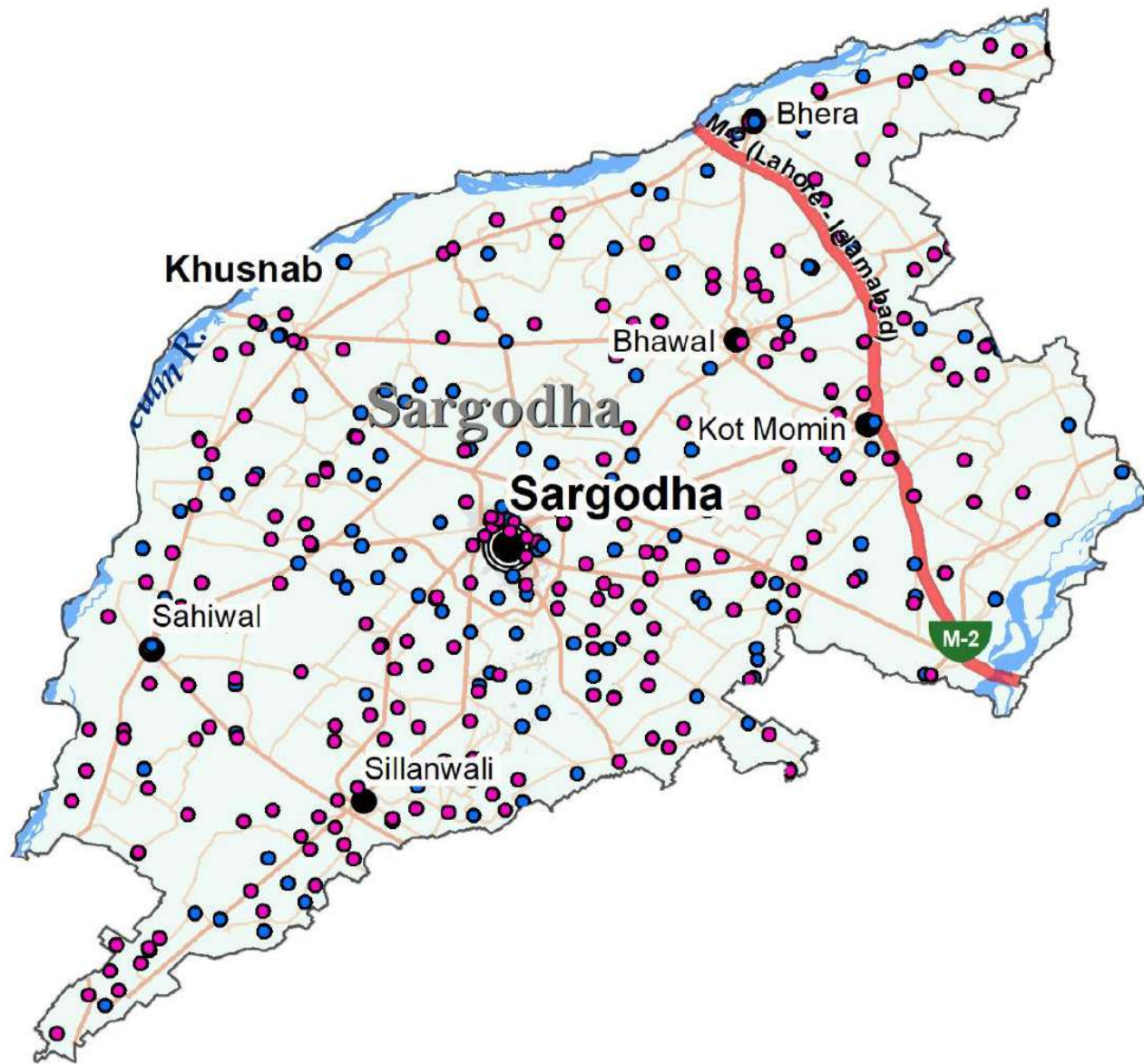


Figure 21: Spatial spread of Middle - Sargodha district

High Schools

(f) Physical Analysis

There are over 302 High schools in the entire district, with 160 Female and 142 Male schools. On average, in the entire district there are approximately 2 schools available at this level to cater to 1000 High school-going age population.

Table 49: Total Male & Female High schools in Sargodha district

District/ Gender	Total schools	Total facilities/1000 people (13-14 years)
Sargodha	302	2
Female	160	
Male	142	

Table 50: Total Male & Female High schools in Sargodha district (Tehsil wise)

Tehsil/Gender	Total Schools
Bhalwal	21
Female	11
Male	10
Bhera	18
Female	4
Male	14
Kot Momin	28
Female	11
Male	17
Sahiwal	27
Female	10
Male	17

Tehsil/Gender	Total Schools
Sargodha	137
Female	89
Male	48
Shahpur	28
Female	12
Male	16
Sillanwali	43
Female	23
Male	20

(g) Infrastructural Analysis

High Schools in this district are mostly well provisioned with basic infrastructural facilities, compared with facilities at lower level, However, there continues to be a shortage of Science labs (missing in 32% schools), libraries, playgrounds and classrooms. This is reflected in a high number of Dangerous and Open-air classrooms.

Table 51: High Schools Infrastructural Assessment

High Schools	Availability of Boundary wall	Availability of Electricity	Availability of Drinking water	Availability of usable Toilets	Availability of Playground
302	300	300	301	2480	238
Gap Analysis					
Total Open-Air Classrooms	Total Dangerous classrooms	High schools without a proper library	High schools without IT labs	High schools without Science labs	
398	147	278	3	97	

(c) Spatial Analysis

The overall spread of High schools in this district is satisfactory, along with male and female school accessibility.

Following figure shows the spatial spread of High schools in Sargodha. Blue dots represent male schools, while pink dots represent female schools.

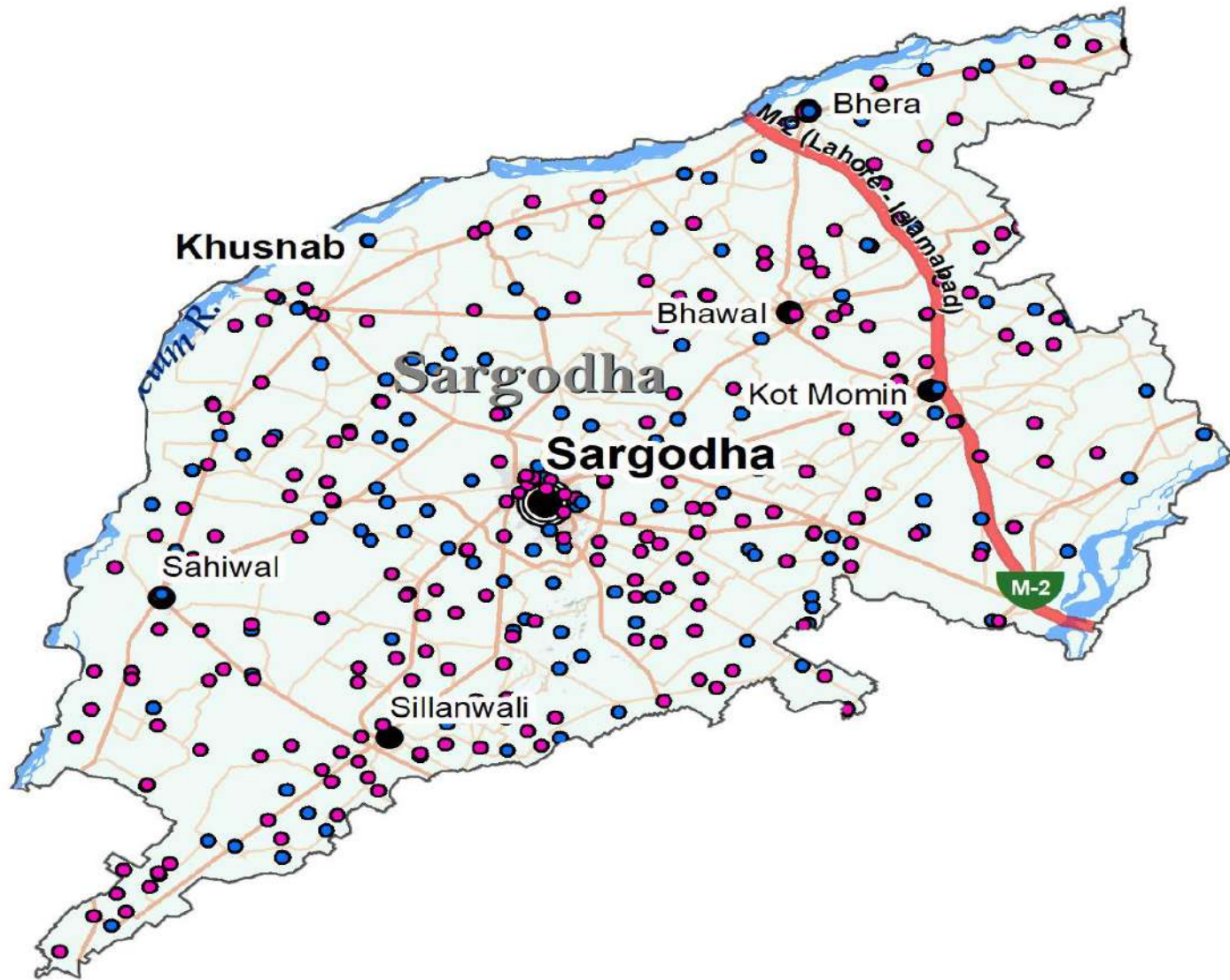


Figure 22: Spatial spread of High Schools – Sargodha district

Higher Secondary Schools & Colleges

(a) Physical Analysis

There are 42 Higher Secondary schools and 33 Intermediate colleges in the entire district. For an average of 1000 people of Higher Secondary school going age, there is not even a single facility available. Therefore, this is indicative of high degree of inaccessibility of Higher secondary education in the district.

Table 52: Total Male & Female Higher Sec schools & Intermediate colleges in Sargodha district

District/ Gender	Total schools	Total Intermediate Colleges	Total facilities/1000 people (15-16 years)
Sargodha	42	33	0.4
Male	20	15	
Female	22	18	

Table 53: Total Male & Female Higher Sec schools & Intermediate colleges in Sargodha district (Tehsil wise)

Tehsil/Gender	Total Schools
Bhalwal	3
Female	2
Male	1
Bhera	1
Female	1
Male	0
Kot Momin	5
Female	2
Male	3
Sahiwal	4
Female	2

Tehsil/Gender	Total Schools
Male	2
Sargodha	20
Female	11
Male	9
Shahpur	3
Female	1
Male	2
Sillanwali	6
Female	3
Male	3

(b) Infrastructural Analysis

Across various infrastructural parameters, Higher Secondary schools perform relatively better than schools at lower levels. However, the problem of shelter-less classrooms and playground unavailability is prevalent in Higher Secondary schools of this district.

Table 54: Higher Sec. Schools Infrastructural Assessment

Higher Secondary Schools	Availability of Boundary wall	Availability of Electricity	Availability of Drinking water	Availability of usable Toilets	Availability of Playground
42	42	42	42	475	37
Gap Analysis					
Total Open-Air Classrooms	Total Dangerous classrooms	High Sec. schools without a proper library		High Sec. schools without IT labs	
77	1	0		3	

(c) Spatial Analysis

The overall spread of Higher Secondary schools in this district is satisfactory, along with male and female school accessibility. However, tehsils Bhalwal, Bhera and Shahpur have fairly poor accessibility of schools at this level, for both males and females.

Following figure shows the spatial spread of Higher Secondary schools and Intermediate colleges in Sargodha. Blue dots represent male schools, while pink dots represent female schools and green badges represent Intermediate colleges.

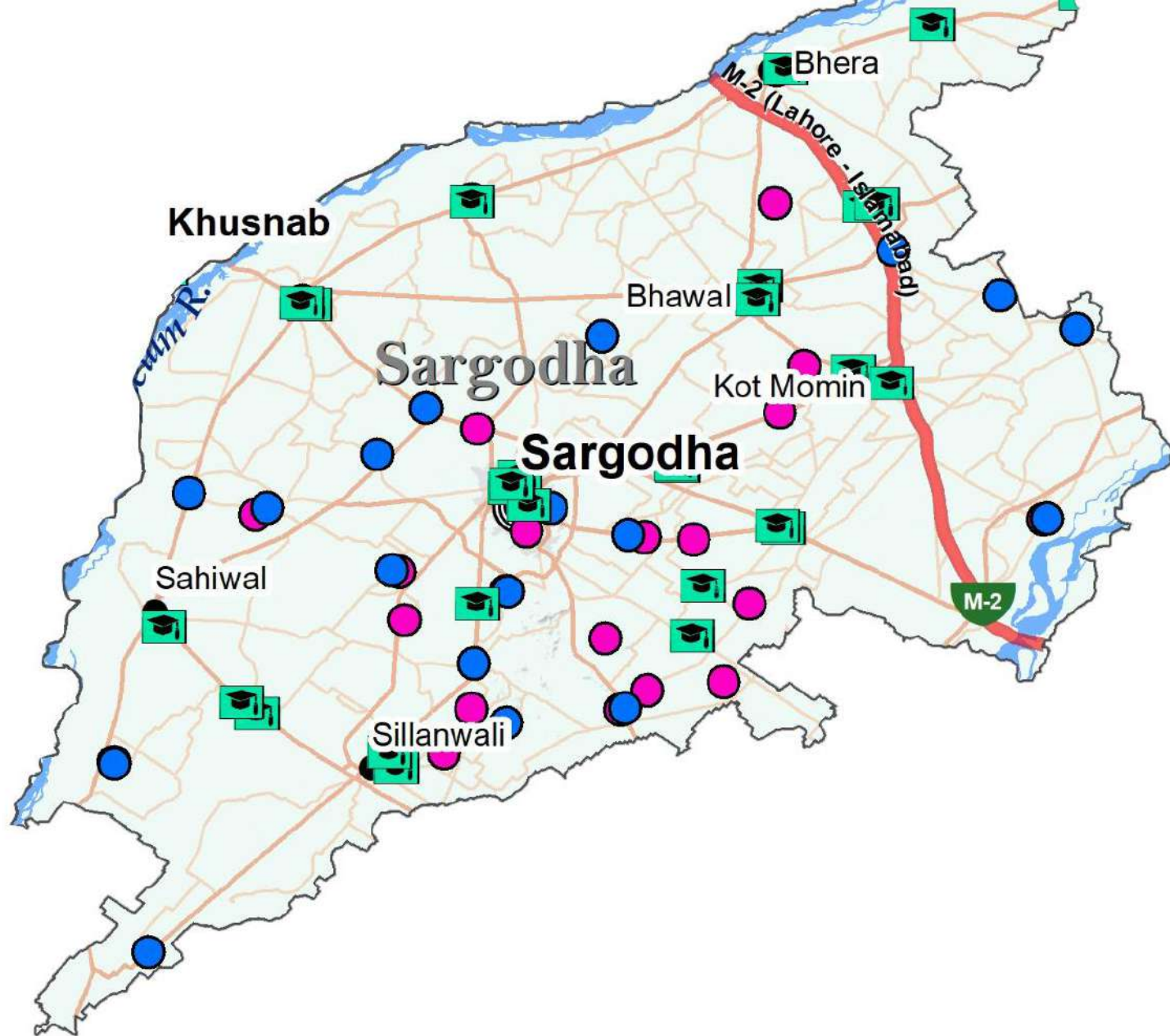


Figure 23: Spatial spread of High Sec. Schools & Intermediate Colleges - Sargodha district

Higher Education

Table 55: University in Sargodha

University	Sector	Programs offered	Departments	Faculty	Student Enrollment
University of Sargodha	Public	BS/MSc/MS/M.Phil./Ph.D.	Sciences, Social sciences, Art & Humanities, Science, Technology & Engineering, Agriculture, Medical and Health Sciences & Pharmacy	716	Male: 12423 Female: 12705



Figure 24: Spatial spread of universities - Sargodha district

STATISTICAL ANALYSIS



Primary School Entry Rate

Primary school entry rates are an important indicator because an effective primary education can build a solid foundation and open avenues for future success. With its profound implications on both the individual and society, primary education plays a crucial role in reducing extreme poverty and promoting social changes. For this particular indicator, Sargodha and Mianwali perform better than the provincial average, while Khushab and Bhakkar lag behind. This is also explained by performing low on School Readiness indicator, where both Bhakkar and Khushab lag behind than other two districts.

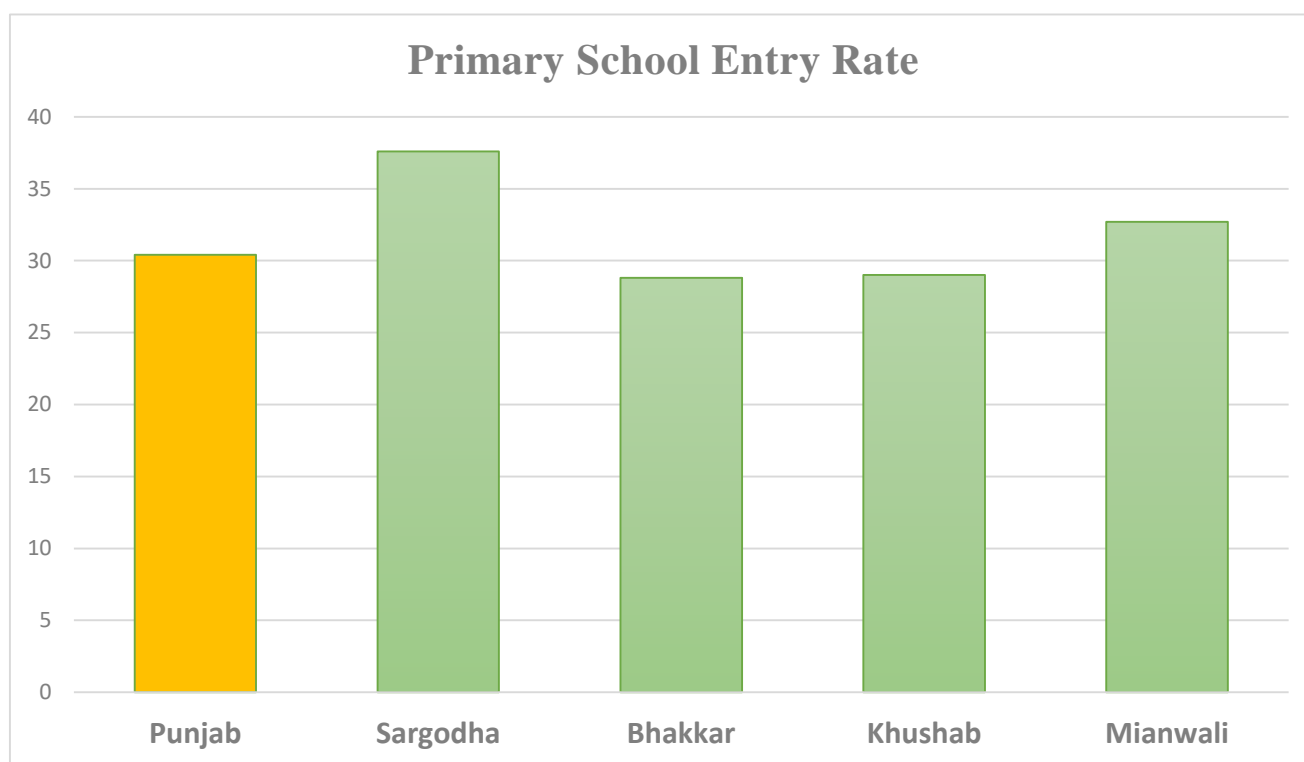


Figure 25: Primary School Entry Rates

Table 56: Primary School Entry Rates

District/Province	Primary School Entry Rate
Punjab	30.4
Sargodha	37.6
Bhakkar	28.8
Khushab	29
Mianwali	32.7

School Completion Rate

Furthermore, retention of students is another issue pervasive in Sargodha division as highlighted by the performance in other education related indicators.

Thus, these figures show that drop-out rates increase swiftly with higher levels of education. This problem is also highlighted through low Completion rates at each level of education, they drop from an average of 60% to 35% from Primary to Upper Secondary level of schooling. This is a challenge because it reduces the likelihood of a huge proportion of youth and school going age children to attain or even complete formal education at all.

Compared to Punjab, Sargodha and Mianwali are roughly performing at the same rate. While Bhakkar and Khushab have lower completion rates and higher drops in rates with each successive level.

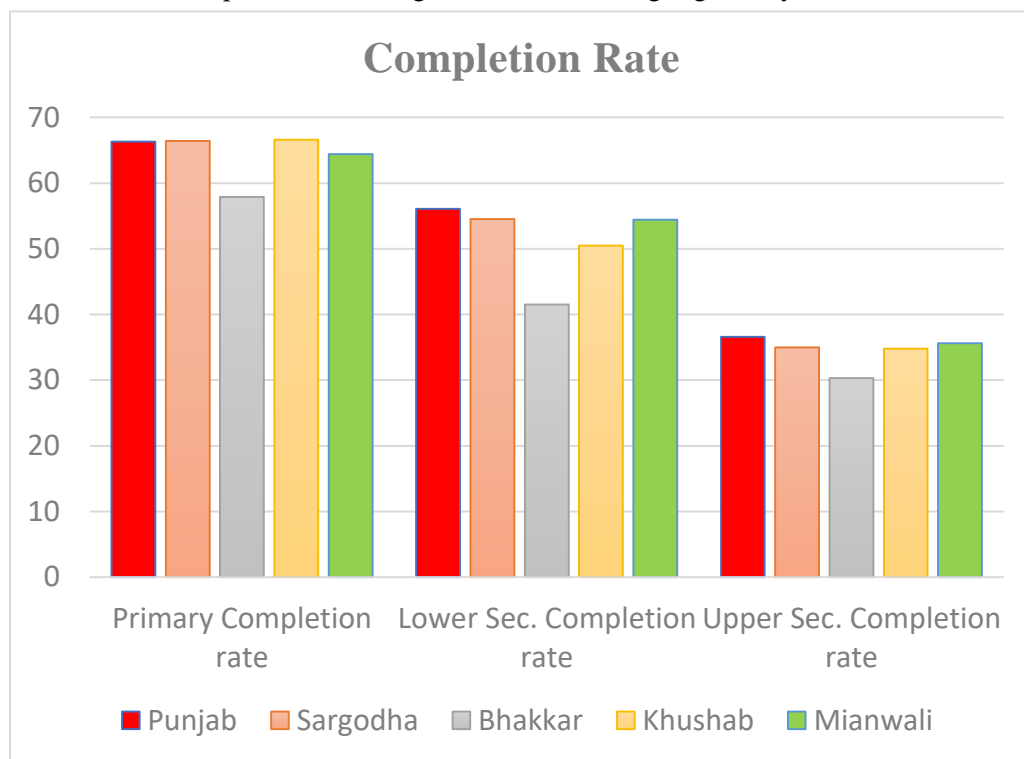


Figure 26: School Completion Rate

Table 57: Completion Rates

District/Province	Primary Completion rate	Lower Sec. Completion rate	Upper Sec. Completion rate
Punjab	66.3	56.1	36.6
Sargodha	66.4	54.5	35
Bhakkar	57.9	41.5	30.3

Khushab	66.6	50.5	34.8
Mianwali	64.4	54.4	35.6

Transition Rate

This indicator is another important measure of gauging student retention in the realm of formal education. It measures the effective transition rate from Primary to lower secondary school.

All the four districts of Sargodha division are performing lower than the provincial average for this indicator with the lowest rate in Khushab and Mianwali.

This means that while Primary school entry rates are already low, student participation reduces even further in the next level of education.

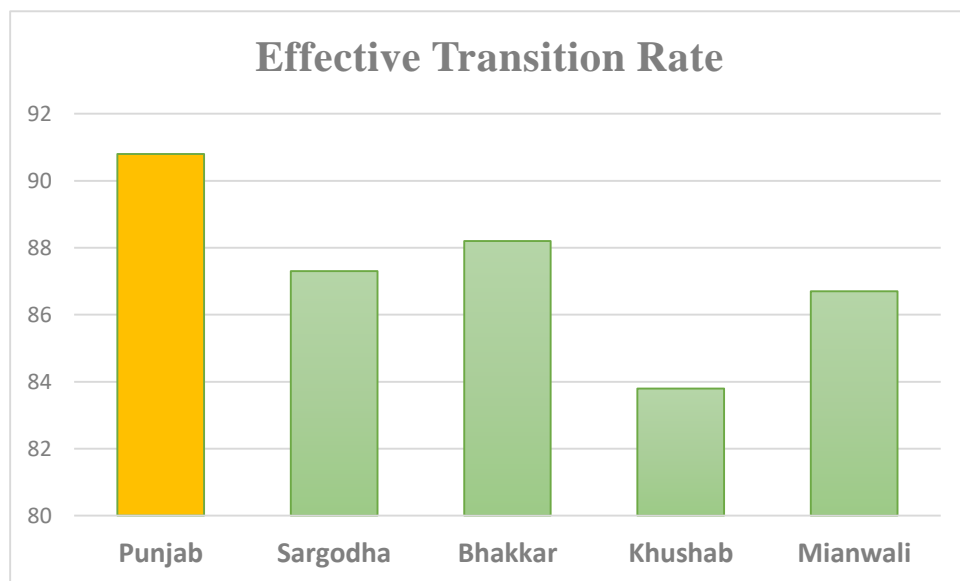


Figure 27: Transition Rate

Table 58: Transition Rate

District/Province	Effective Transition rate
Punjab	90.8
Sargodha	87.3
Bhakkar	88.2
Khushab	83.8
Mianwali	86.7

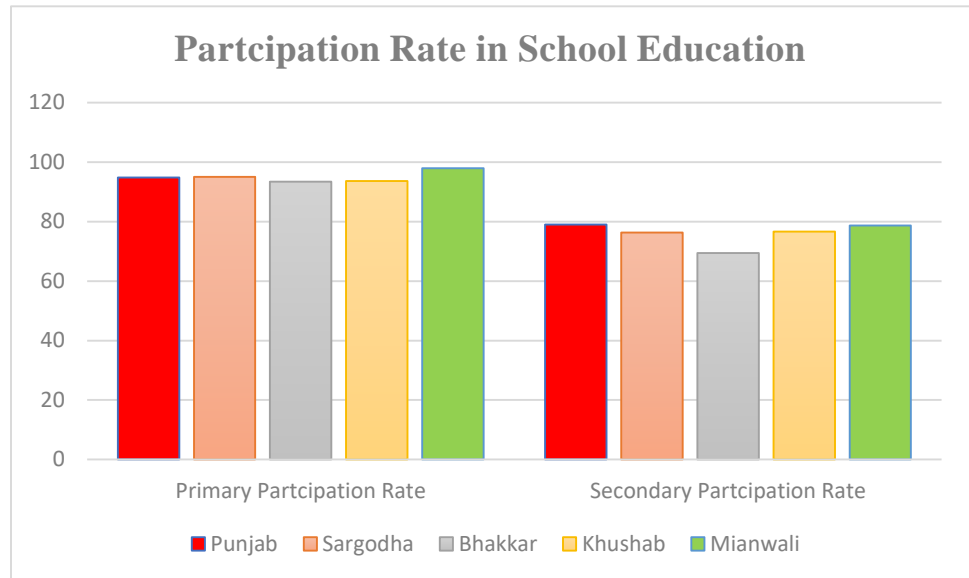


Figure 28: School Participation Rate

School Participation Rate

This indicator underscores student enrollment rates in formal education. Once again, this indicator is indicative of declining enrollment and retention rates at higher education levels. At Primary and Secondary level both, among all the districts, Mianwali is performing better than provincial average and other districts too. While Bhakkar experiences the lowest Participation rates at both levels.

Table 59: Participation rate

District/Province	Primary Participation Rate	Secondary Participation Rate
Punjab	94.8	79
Sargodha	95	76.3
Bhakkar	93.4	69.4
Khushab	93.7	76.6
Mianwali	98	78.7

Gender Parity Index

Additionally, by assessing the enrollment rates through a gendered lens some key inferences can be made about variation in participation rates. Gender parity index values demonstrate that in Sargodha division at Primary and Secondary level female disparity in enrollment rates is significant and also greater than provincial average. Additionally, Bhakkar, Khushab and Mianwali districts have the lowest

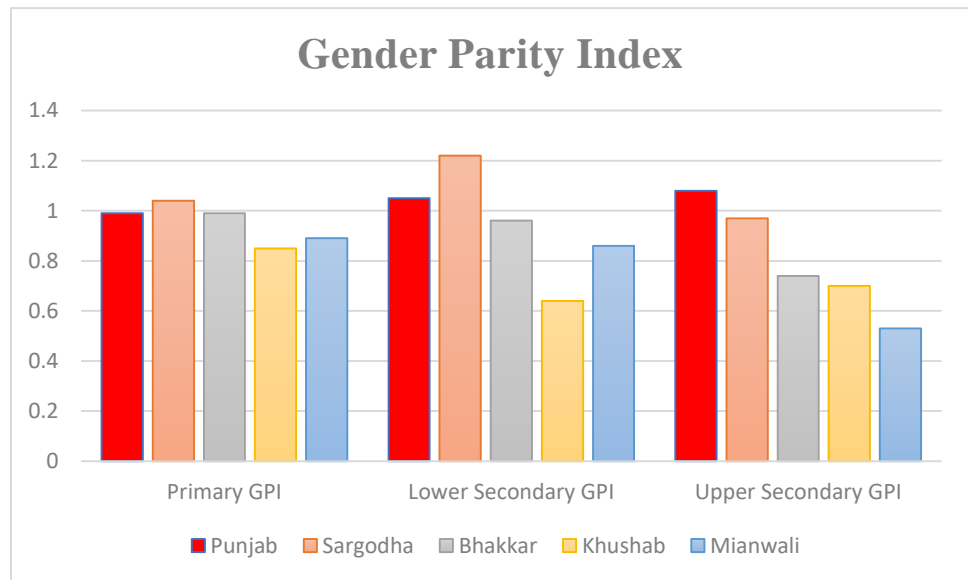


Figure 29: Gender Parity Index

relative GPI values in the division at all levels, Thus, Sargodha district is an outlier here, in terms of performing slightly better than other districts of this division.

Table 60: Gender Parity Index

District	Primary GPI	Lower Secondary GPI	Upper Secondary GPI
Punjab	0.99	1.05	1.08
Sargodha	1.04	1.22	0.97
Bhakkar	0.99	0.96	0.74
Khushab	0.85	0.64	0.7
Mianwali	0.89	0.86	0.53

Foundational Learning Skills

Foundational learning skills is a key indicator to assess the quality of education for children aged 7-14 years. It measures the percentage of children who have successfully completed three foundational reading tasks and four foundational number tasks.

It is imperative to highlight that Mianwali and Bhakkar both outperform for this indicator at divisional as well as provincial level.

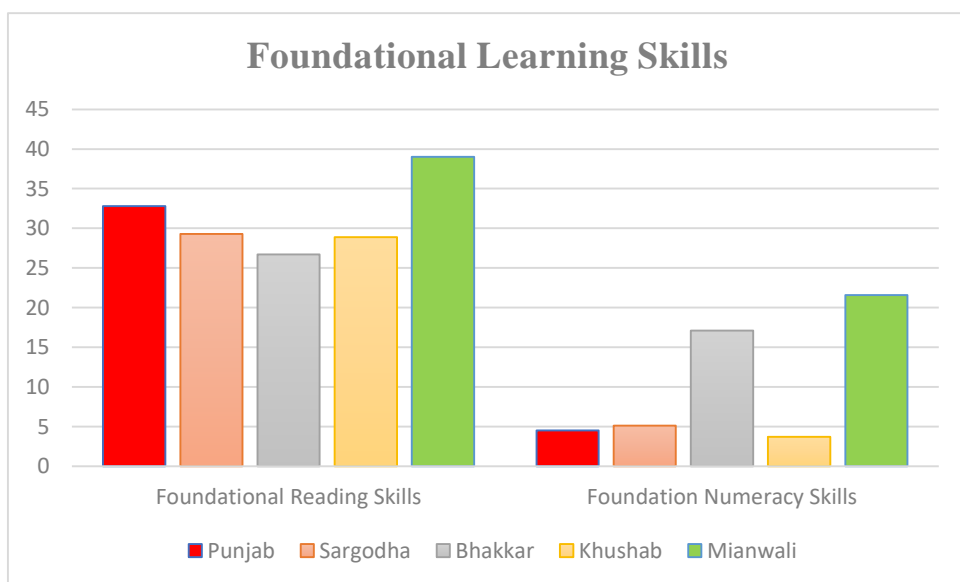


Figure 30: Foundational Learning Skills

Table 61: Foundational Learning Skills

District/Province	Foundational Reading Skills	Foundation Numeracy Skills
Punjab	32.8	4.5
Sargodha	29.3	5.1
Bhakkar	26.7	17.1
Khushab	28.9	3.7
Mianwali	39	21.6

Out of School Children

This indicator is reflective of low school retention rates and high drop-out rates among school going age children. The data reveals that while this issue exists in the educational landscape of the division, yet it is less stark than the provincial average. All the districts, on average have lower rates of out-of-school children compared to Punjab.

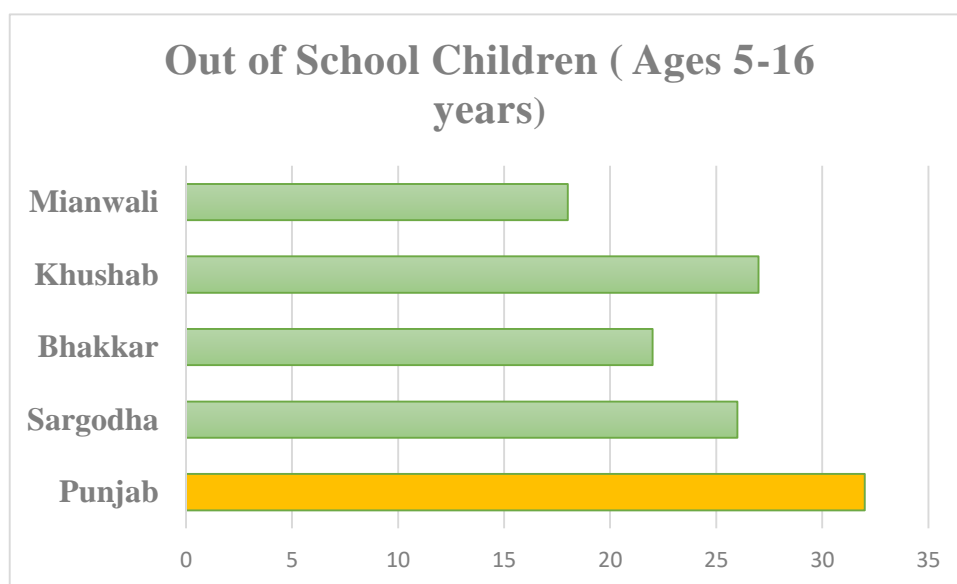


Figure 31: Out of School Children

Table 62: Out of School Children

District/Province	Out of School Children (Ages 5-16 years)
Punjab	32
Sargodha	26
Bhakkar	22
Khushab	27
Mianwali	18

Teacher Retention

As per the statistics of School Information System (SIS), the proportion of teachers designated in primary schools outweigh the number of teachers in lower secondary and higher secondary schools. This is primarily due to greater spread and accessibility of Primary schools in the division.

Table 63: Teaching staff in Sargodha division

Teaching Post	Bhakkar	Khushab	Mianwali	Sargodha
Primary School Teachers	4,512	3,483	4730	7,204
Elementary School Teachers	1864	1449	2102	4,555
Secondary School Teachers	824	739	846	1921
Subject Specialist Teachers	67	62	65	230
Grand Total	7,267	5,733	7,743	13,910

A key issue as far the human resource is concerned in the school education sector, is of the high number of vacant posts. Almost, 16-25% posts are vacant in all the four districts. Table reveals that this is a prevalent issue across all levels of education, but gets more grave when there is a dearth of specialised and subject teachers at higher levels.

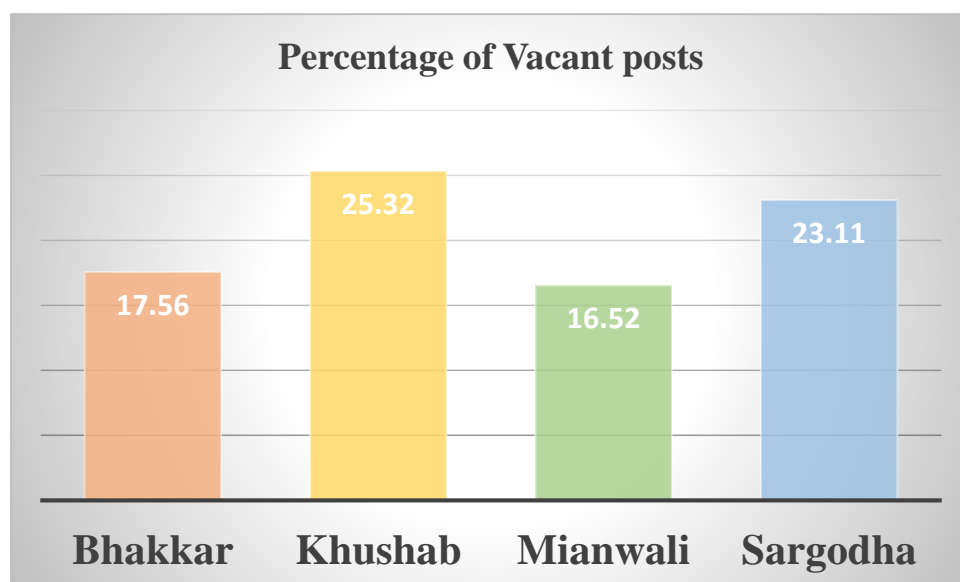


Figure 32: Vacant posts

The following table shows that the problem of teaching staff scarcity is immense for all the levels of School education in Sargodha division. However, the dearth of teachers at the Primary level is more pronounced than at other levels, comparatively. Additionally, in every district almost 50-60% posts of subject specialist teachers are lying vacant as per School Information System data, 2022. In Khushab and Mianwali alone 60% of SST positions are lying vacant.

Table 64: Teaching staff statistics

Teaching Post	Vacant	Filled	Sanctioned
Bhakkar			
Primary School Teachers	1,077	4,512	5,589
Elementary School Teachers	315	1,864	2,179
Secondary School Teachers	51	824	875
Subject Specialist Teachers	118	128	246
Khushab			
Primary School Teachers	1,084	3,483	4,567
Elementary School Teachers	532	1,449	1,981
Secondary School Teachers	167	739	906
Subject Specialist Teachers	178	114	292
Mianwali			
Primary School Teachers	963	4,729	5,692
Elementary School Teachers	302	2,103	2,405
Secondary School Teachers	86	841	927

Teaching Post	Vacant	Filled	Sanctioned
Subject Specialist Teachers	195	141	336
Sargodha			
Primary School Teachers	2,257	7,204	9,461
Elementary School Teachers	1,023	4,555	5,578
Secondary School Teachers	450	1,922	2,372
Subject Specialist Teachers	509	420	929

GROUND LEVEL ANALYSIS

Ground Level Analysis



Stakeholder Consultations



Figure 33: Ground level analysis - Stakeholder consultations

TOP ROW

- Meeting with DD Development and CEO Education, Bhakkar
- Meeting with DC Mianwali
- Meeting with CEO Education, Mianwali

BOTTOM ROW

- Meeting with Principal Govt. Girls High School, Darya Khan, Bhakkar
- Meeting with Principal Govt. Girls Higher Secondary School, Bhera, Sargodha
- Meeting with Principal Mian Nawaz Sharif Associate College, Sargodha



Field Visits



Figure 34: Ground level analysis - Field visits

TOP ROW

- Overcrowded Classroom, Govt. Boys Model High School, Bhakkar
- Outdated IT lab equipment, Govt. Boys Elementary School, Mankera

BOTTOM ROW

- Non-functional library, Govt. Girls Elementary School
- Furniture unavailability & dilapidation
- Shelter-less/Open-air classroom

Gap Assessment

When compared with Punjab, low test scores in Reading and Numeracy assessments are representative of weak foundational skills, as well as low learning levels among students of all age cohorts. These figures highlight the issue of low quality of education in the Sargodha Division.

Furthermore, MICS report 2017-18 reveals that Child labor² is also prevalent in Sargodha division with almost 16% school going age children involved in some form of economic activity. In addition to that, some of the supply side factors include: poor infrastructure, lack of competent human resource and weak governance in the education sector of Sargodha Division that poorly impacts school participation and student motivation to continue education.

The data highlights that Teacher absence rate is almost 10%, along with Head Teacher unavailability/absence in 20% of the schools in all the four districts of the division. Hence, these administrative constraints play a pivotal role in catalysing other challenges such as: low student attendance rates; low completion rates of both Primary and Secondary level; and hence, low transition rates from primary to secondary level. Thus, a high number of children drop out of school or remain out of school, as observed in the aforementioned statistics.

The list of issues and challenges in education (though not exhaustive) can be summarised in the following points, after an overall situational assessment:

- Low learning levels across all levels of Education
- Low Completion rates and Transition at primary and secondary level
- Lack of adequate infrastructure (Furniture unavailability)
- Overcrowding in classrooms – high student teacher ratios
- Low Attendance rates across all levels of School Education
- High rate of gender disparity across levels of education
- High Drop-out rates
- Issues in retention of the Teaching staff
-

Way Forward

Future policies and interventions should aim towards improving the educational landscape across administrative and governance fronts which includes Monitoring and Evaluation of the teaching staff, increasing access to post-primary education and upgrading school infrastructure.

a) To begin with, to offset the issue of High student teacher ratios and overcrowded classrooms, projects aimed at provision of additional classrooms and upgradation of degrading and dangerous buildings/rooms/blocks should be implemented on high priority.

b) Another challenge in the educational landscape of Sargodha Division is low participation in post-primary education due to a gap in school coverage and hence, low availability of schools which results in a high drop out rate and out of school children in the division. A viable strategy in the short term could be

² Percentage of children of ages 5-17 years engaged in child labour, Punjab, 2017-18

to upgrade existent primary schools to higher levels to offset the gap in supply of post-primary schools in the region. Additionally, with a greater emphasis on rural areas which are more deprived.

c) Upgradation of infrastructure is a crucial factor as it has a bearing on participation rates, retention rates and student learning outcomes. Educational facilities in Sargodha division lag behind in some form of resource provisioning and the problem gets compounded due to a stark urban-rural socio-economic divide in the region - basic facilities like safe buildings, boundary walls, clean drinking water, sanitation are either missing or of poor quality. Hence, among other implications, this situation negatively impacts student retention and specifically female participation in formal education. A survey of the quality of infrastructure in Punjab indicates that the attendance of girls triples when schools have proper classrooms. Additionally, Studies in several developing countries, including Bangladesh and India, have pointed out that having toilets, particularly in middle and high schools, is key to improving girls' participation in schooling and reducing dropouts. Alif Ailaan reports that 52% of boys and 30% of girls drop out of school because they are unwilling to go to schools. Factors responsible for this unwillingness include the lack of basic facilities in schools, poor quality of basic facilities in schools and poor quality of education. It is imperative that the Provincial and local government ensure adequate school infrastructure is available and there is timely upgradation of existent facilities to address these issues to increase enrollments and reduce dropouts. To better analyze this phenomenon, a school wise survey could be conducted to assess the impact of standard of existent infrastructural facilities with the overall performance of that school in central examinations. This would aid in optimally allocating grant funding to schools.

d) Community engagement is integral to upscale the quality of education, as they are the key stakeholders. Hence, interventions aimed at developing school-community linkages such as setting up local school councils to involve them in key deliberations involving budget allocation and staff recruitment.

Proposed Plan for the Education sector

Following is the list of the proposed projects for the education sector, they deal with remedying pervasive issues like high number of out of school children, low completion and transition rates. The emphasis of most projects is on upgradation of infrastructural facilities, upgradation of primary schools to higher levels [to offset the supply constraint], increasing education accessibility for female population of the region and community-based interventions.

Table 65: Education sector Interventions

Sr. No.	District	Sector	Type	Project Name	Total Cost (PKR Million)
BHAKKAR					

Sr. No.	District	Sector	Type	Project Name	Total Cost (PKR Million)
Short Term					
1	Bhakkar	School Education	Short Term	Establishment of schools (40 Nos.) in district Bhakkar	400.00
2	Bhakkar	School Education	Short Term	Up-gradation of Primary school to Elementary level (112 Nos.) in district Bhakkar	1112.00
3	Bhakkar	School Education	Short Term	Up-gradation of Elementary school to High level (47 Nos.) in district Bhakkar	705.00
4	Bhakkar	School Education	Short Term	Upgradation of FOUR High School (<i>female</i>) to High secondary (Tehsil Darya Khan)	100.00
5	Bhakkar	School Education	Short Term	Upgradation of FOUR High School (<i>male</i>) to High secondary (Tehsil Darya Khan)	100.00
6	Bhakkar	School Education	Short Term	Upgradation of TWO High School (<i>female</i>) to High secondary (Tehsil Bhakkar)	50.00
7	Bhakkar	School Education	Short Term	Upgradation of TWO High School (<i>male</i>) to High secondary (Tehsil Bhakkar)	50.00
8	Bhakkar	School Education	Short Term	Upgradation of FOUR High School (<i>female</i>) to High secondary (Tehsil Mankera)	100.00
9	Bhakkar	School Education	Short Term	Upgradation of TWO High School (<i>male</i>) to High secondary (Tehsil Kallur Kot)	50.00

Sr. No.	District	Sector	Type	Project Name	Total Cost (PKR Million)
10	Bhakkar	School Education	Short Term	Upgradation of TWO High School (malee) to Hs secondary (Tehsil Kallur Kot)	50.00
11	Bhakkar	School Education	Short Term	Upgradation of THREE High School (female) to High secondary (Tehsil Kallur Kot)	75.00
12	Bhakkar	School Education	Short Term	Up-gradation of High school to Higher Secondary level (4 Nos.) in district Bhakkar	220.00
13	Bhakkar	Higher Education	Short Term	Establishment of Govt. Associate College For Women Dhingana	220.00
14	Bhakkar	Higher Education	Short Term	Establishment of Govt. Associate College For Women Khansar	220.00
15	Bhakkar	Higher Education	Short Term	Establishment of Govt. Associate College For Women Haituu Khasoor	220.00
16	Bhakkar	Higher Education	Short Term	Establishment of Govt. Associate College For Boys Khansar	270.00
17	Bhakkar	Higher Education	Short Term	Provision of Additional Class Rooms at Govt. Associate College for women Bhakkar	105.00
Medium Term					
18	Bhakkar	School Education	Medium Term	Provision of IT labs in 159 Middle schools	160.00
19	Bhakkar	School Education	Medium Term	Provision of Science labs in 58 High schools	11.60

Sr. No.	District	Sector	Type	Project Name	Total Cost (PKR Million)
20	Bhakkar	School Education	Medium Term	Upgradation of Multipurpose Hall in Govt. Boys Model High School, Bhakkar	10.00
21	Bhakkar	School Education	Medium Term	Rehabilitation of Dangerous Building in Govt. Girls Elementary School, Darya Khan	3.00
22	Bhakkar	School Education	Medium Term	Provision of Additional Classrooms in Schools with the highest enrollment	50.00
23	Bhakkar	School Education	Medium Term	Reconstruction of Dangerous Classrooms (56 in High, 24 in Elementary & 56 in Primary)	50.00
24	Bhakkar	School Education	Medium Term	Rehabilitation of Open-air classrooms (10 in H.Sec, 190 in High, 286 in Elementary & 2189 in Primary)	10.00
25	Bhakkar	School Education	Medium Term	Construction of Additional Class Room (678 Nos) in district Bhakkar (Block Allocation)	1356.00
26	Bhakkar	School Education	Medium Term	Reconstruction of Dangerous School Buildings in district Bhakkar (160 Nos)	320.00
27	Bhakkar	School Education	Medium Term	Provision of Missing Facilities in 535 schools of Bhakkar	200.00
28	Bhakkar	School Education	Medium Term	Provision of IT Labs in Elementary School (86) Bhakkar	172.00

Sr. No.	District	Sector	Type	Project Name	Total Cost (PKR Million)
29	Bhakkar	School Education	Medium Term	Provision of IT Labs in H/S & H/SSS School (11) Bhakkar	26.00
Long Term					
30	Bhakkar	Higher Education	Long Term	Construction of Multipurpose Hall and Bus Garage at Govt. Associate College Darya Khan	85.00
31	Bhakkar	Higher Education	Long Term	Construction of Multipurpose Hall at Govt. Associate College Dulle Wala	70.00
32	Bhakkar	Higher Education	Long Term	Construction of Faculty car shed and provision of furniture for exissting multipurpose hall at Govt. Associate College for Boys Mankera	105.00
33	Bhakkar	Higher Education	Long Term	Construction of Multipurpose Hall and Bus Garage at Govt. Associate College For Women Mankera	85.00
34	Bhakkar	Higher Education	Long Term	Construction of Multipurpose Hall at Govt. Associate College For Women 47/TDA	70.00
35	Bhakkar	Higher Education	Long Term	Construction of Multipurpose Hall at Govt. Associate College For Women Haiderabad Thal	70.00
36	Bhakkar	Higher Education	Long Term	Construction of Multipurpose Hall and Bus Girrage at Govt. Associate	85.00

Sr. No.	District	Sector	Type	Project Name	Total Cost (PKR Million)
				College women Dulle Wala	
37	Bhakkar	Higher Education	Long Term	Construction of Multipurpose Hall and Bus Girrage at Govt. Associate College women Jandan wala	55.00
38	Bhakkar	Higher Education	Long Term	Construction of Multipurpose Hall at Govt. Associate College 47/TDA	70.00
39	Bhakkar	Higher Education	Long Term	Construction of Canteen for BS Students, Cycle Stand, Faciluty shed and Bus Garage at Government Graduate College Bhakkar	185.00
40	Bhakkar	Higher Education	Long Term	Construction of Academic & Admin Block, Girls Hostils and STC I/C Provision of Boundary wall at allotted piece of land of Thal Univesity at Saray Mohjar (phase-II)	1220.00
KHUSHAB					
Short Term					
41	Khushab	School Education	Short Term	Upgradation of GES to Higher Secondary level, Sodhi Jay Wali, Khushab	20.00
42	Khushab	School Education	Short Term	Upgradation from Primary to Elementary Level - GPS, EID GAH	20.00

Sr. No.	District	Sector	Type	Project Name	Total Cost (PKR Million)
				Noorpur Thal, Khushab	
43	Khushab	School Education	Short Term	Up-gradation of 6 schools into next level.	105.00
44	Khushab	School Education	Short Term	Construction of Cricket ground & Community park at GHS, Naushera	20.00
45	Khushab	School Education	Short Term	Establishment of Govt. Girls Elementary School, Eid Gah, Noorpur Thal	50.00
46	Khushab	School Education	Short Term	Establishment of 4 New Schools	36.00
47	Khushab	School Education	Short Term	Provision of missing facilities in Schools.	91.50
48	Khushab	School Education	Short Term	Boundary Wall in 5 Schools 3130 Rft	
49	Khushab	School Education	Short Term	Toilet Blocks in 46 Schools.	
Medium Term					
50	Khushab	School Education	Medium Term	Establishment of 4 New Schools	36.00
51	Khushab	School Education	Medium Term	Up-gradation of 6 schools into next level.	105.00
52	Khushab	School Education	Medium Term	Re-construction of 58 Dangerous Class Rooms in School Buildings	161.00
53	Khushab	School Education	Medium Term	Construction of 115 Nos. Addl. Class rooms in 40 Schools.	307.00
54	Khushab	School Education	Medium Term	Provision of IT labs in 100 Middle schools and 11 High schools	277.50

Sr. No.	District	Sector	Type	Project Name	Total Cost (PKR Million)
55	Khushab	School Education	Medium Term	Provisiion of Science labs in 50 High schools	10.00
56	Khushab	School Education	Medium Term	Construction of Cricket ground & Community park at GHS, Naushera	20.00
57	Khushab	School Education	Medium Term	Reconstruction of Dangerous Classrooms (23 in H.sec, 42 in High schools, 28 in Elementary & 46 in Primary)	10.00
58	Khushab	School Education	Medium Term	Rehabilitation of Open-air classrooms (10 in H.sec, 149 in High, 172 in Elementary & 1725 in Primary)	10.00
59	Khushab	School Education	Medium Term	Provision of Additional Classrooms in Schools with the highest enrollment	50.00
60	Khushab	Higher Education	Medium Term	Rehabilitation of Govt. Associate College for Women Rangpur Baghour.	50.00
61	Khushab	Higher Education	Medium Term	Rehabilitation of Govt. Associate College for Women Naushera.	50.00
62	Khushab	Higher Education	Medium Term	Rehabilitation of Govt. Associate College for Women Jauharabad.	50.00
63	Khushab	Higher Education	Medium Term	Missing Facilities in Govt. Graduate College Jauharabad.	57.00
64	Khushab	Higher Education	Medium Term	Missing Facilities in Govt. Associate College Noorpur Thal.	40.00

Sr. No.	District	Sector	Type	Project Name	Total Cost (PKR Million)
65	Khushab	Higher Education	Medium Term	Missing Facilities in Govt. Associate College 47 MB.	40.00
66	Khushab	Higher Education	Medium Term	Missing Facilities in Govt. Associate College Quaidabad.	32.00
67	Khushab	Higher Education	Medium Term	Missing Facilities in Govt. Associate College for Women at Quaidabad.	40.00
68	Khushab	Higher Education	Medium Term	Missing Facilities in Govt. Associate College for Women Noorpur Thal.	15.50
69	Khushab	Higher Education	Medium Term	Missing Facilities in Govt. Associate College for Women 47 MB.	10.00
70	Khushab	Higher Education	Medium Term	Missing Facilities in Govt. Associate College for Women \khushab.	47.00
71	Khushab	Higher Education	Medium Term	Missing Facilities in Govt. Associate College for Women at Rangpur Baghoor.	12.00
72	Khushab	Higher Education	Medium Term	Missing Facilities in Govt. Associate College Naushera.	37.00
73	Khushab	Higher Education	Medium Term	Missing Facilities in Govt. Associate College of Commerce Naushera.	100.00
74	Khushab	Higher Education	Medium Term	Missing Facilities in Govt. Associate College of Commerce Noorpur Thal.	100.00
Long Term					
75	Khushab	Higher Education	Long Term	Construction of Multipurpose Hall in 3 Schools.	10.00

Sr. No.	District	Sector	Type	Project Name	Total Cost (PKR Million)
76	Khushab	Higher Education	Long Term	2 Addl. Rooms and Toilet Set in DO office.	5.00
77	Khushab	Higher Education	Long Term	Construction of 4 Nos. Tehsil Educational Complex.	100.00
MIANWALI					
Short Term					
78	Mianwali	School Education	Short Term	Up-gradation of Elementary to High School at Kot Chandna	20.00
79	Mianwali	School Education	Short Term	Establishment of Govt. Associate College for Women at Sultankhel, Isakhel	198.99
80	Mianwali	Higher Education	Short Term	Govt. Associate College for Boys at Tari Khel	198.99
81	Mianwali	Higher Education	Short Term	Establishment of Govt. Associate College for Girls Mianwali	198.99
82	Mianwali	Higher Education	Short Term	Establishment of Govt. Associate College for Boys Harnoly, Piplan	198.99
Medium Term					
83	Mianwali	School Education	Medium Term	Rehabilitation of Govt. Boys High School, Mianwali	50.00
84	Mianwali	School Education	Medium Term	Provision of Multipurpose Hall in Govt. Girls High School, Mianwali	50.00
85	Mianwali	Higher Education	Medium Term	Provision of Missing Facilities in Govt. Graduate College Mianwali	83.00

Sr. No.	District	Sector	Type	Project Name	Total Cost (PKR Million)
86	Mianwali	Higher Education	Medium Term	Provision of Missing Facilities in Govt. Graduate College for Women Mianwali	92.20
87	Mianwali	Higher Education	Medium Term	Provision of Missing Facilities in Govt. Associate College Isakhel	22.00
88	Mianwali	Higher Education	Medium Term	Provision of Missing Facilities in Govt. Associate College for Women Kamar Mashani	70.00
89	Mianwali	Higher Education	Medium Term	Provision of Missing Facilities in Govt. Associate College for Women Mochh	10.00
90	Mianwali	Higher Education	Medium Term	Provision of Missing Facilities in Govt. Associate College for Women Wan Bhachran	70.00
91	Mianwali	Higher Education	Medium Term	Provision of Missing Facilities in Govt. Associate College for Women Musakhel	70.00
92	Mianwali	Higher Education	Medium Term	Provision of Missing Facilities in Govt. Associate College for Women Liaquatabad	70.00
93	Mianwali	Higher Education	Medium Term	Provision of Missing Facilities in Govt. Associate College Liaquatabad	70.00
94	Mianwali	Higher Education	Medium Term	Provision of Missing Facilities in Govt. Associate College for Women Kundian	10.00
95	Mianwali	Higher Education	Medium Term	Provision of Missing Facilities in Govt. Associate College for Women Isakhel	10.00

Sr. No.	District	Sector	Type	Project Name	Total Cost (PKR Million)
96	Mianwali	Higher Education	Medium Term	Provision of Missing Facilities in Govt. Associate College Kundian	10.00
97	Mianwali	Higher Education	Medium Term	Provision of Missing Facilities in Govt. Associate College Kalabagh	10.00
98	Mianwali	Higher Education	Medium Term	Provision of Missing Facilities in Govt. Associate College for Women Daudkhel	60.00
99	Mianwali	Higher Education	Medium Term	Provision of Missing Facilities in Govt. Associate College of Commerce Mianwali	70.00
100	Mianwali	School Education	Medium Term	Provision of IT labs in 144 Middle schools	150.00
101	Mianwali	School Education	Medium Term	Provision of Science labs in 52 High schools	10.40
102	Mianwali	School Education	Medium Term	Provision of Additional Classrooms in Schools with the highest enrollment	50.00
103	Mianwali	School Education	Medium Term	Reconstruction of Dangerous Classrooms (4 in H.sec, 46 in High, 17 Elementary and 73 in Primary)	50.00
104	Mianwali	School Education	Medium Term	Rehabilitation of Open-air classrooms (9 in H.sec, 140 in High, 222 in Elementary & 1692 in Primary)	50.00
SARGODHA					
Short Term					

Sr. No.	District	Sector	Type	Project Name	Total Cost (PKR Million)
105	Sargodha	School Education	Short Term	Upgradation of GGPS Rawal to Elementary level	10.00
106	Sargodha	School Education	Short Term	Upgradation of GGPS Chak No75/NB to Elementary level	10.00
107	Sargodha	School Education	Short Term	Upgradation of GGPS to Middle School level Chak No.69/SB District Sargodha.	10.00
108	Sargodha	School Education	Short Term	Upgradation of Govt. Boys Primary School to Middle School Talib Wala District Sargodha	10.00
109	Sargodha	School Education	Short Term	Upgradation of Govt. Boys Primary School to Middle School Jan Muhammad wala District Sargodha.	10.00
110	Sargodha	School Education	Short Term	Upgradation of Govt. Primary School to Middle School, Burkan Noon District Sargodha	10.00
111	Sargodha	School Education	Short Term	Upgradation of GMPS to Middle School level Chak No.68/SB District Sargodha.	10.00
112	Sargodha	School Education	Short Term	Upgradation of GMPS to Middle School level Ahmad-e-wala District Sargodha.	10.00
113	Sargodha	School Education	Short Term	Upgradation of GGPS to Middle school level Bhiki Khurd District Sargodha	10.00

Sr. No.	District	Sector	Type	Project Name	Total Cost (PKR Million)
114	Sargodha	School Education	Short Term	Upgradation of Primary to Middle School level Chak Khana District Sargodha.	10.00
115	Sargodha	School Education	Short Term	Upgradation of Primary to Middle School level Ratapur District Sargodha	10.00
116	Sargodha	School Education	Short Term	Upgradation of GGPS to Middle School Syed Nau District Sargodha.	10.00
117	Sargodha	School Education	Short Term	Upgradation of GES Wagawal to High level	13.00
118	Sargodha	School Education	Short Term	Upgradation of GGES Ghanghwal to High level	13.00
119	Sargodha	School Education	Short Term	Upgradation of GES Chohal to High level	13.00
120	Sargodha	School Education	Short Term	Upgradation of GGPS Chak No.51 SB to Elementary level	10.00
121	Sargodha	School Education	Short Term	Upgradation of Govt. Boys Primary School to Middle School Chak No.128/NB	10.00
122	Sargodha	School Education	Short Term	Upgradation of Govt. Boys Elementary School to High School Chak No.160/NB	10.00
123	Sargodha	School Education	Short Term	Upgradation of Govt. Girls Primary School to Middle School Chak No.169/NB	10.00
124	Sargodha	School Education	Short Term	Upgradation of Govt. Boys Elementary School to High School Chak No.169/NB	10.00

Sr. No.	District	Sector	Type	Project Name	Total Cost (PKR Million)
125	Sargodha	School Education	Short Term	Upgradation of GPS Mochiwal to Elementary level	10.00
126	Sargodha	School Education	Short Term	Upgradation of GGPS Nawab Pur to Elementary level	10.00
127	Sargodha	School Education	Short Term	Upgradation of GGES Naseer Pur Kalan Tehsil Kotmoman District Sargodha to High level	13.00
128	Sargodha	School Education	Short Term	Upgradation of GMPS Havali Nanak Chand Ghullah Pur Tehsil Kotmoman District Sargodha to Elementary level	10.00
129	Sargodha	School Education	Short Term	Upgradation of GGPS Chak No.12/SB Tehsil Kotmoman District Sargodha to Elementary level	10.00
130	Sargodha	School Education	Short Term	Upgradation of GBPS Chak No.12/SB Tehsil Kotmoman District Sargodha to Elementary level	10.00
131	Sargodha	School Education	Short Term	Upgradation of GBPS Loranwali Tehsil Kotmoman District Sargodha to Elementary level	10.00
132	Sargodha	School Education	Short Term	Upgradation of GGPS Bakhowala Tehsil Kotmoman District Sargodha to Elementary level	10.00
133	Sargodha	School Education	Short Term	Upgradation of GMPS Khumb Kohna Tehsil Kotmoman District	10.00

Sr. No.	District	Sector	Type	Project Name	Total Cost (PKR Million)
				Sargodha to Elementary level	
134	Sargodha	School Education	Short Term	Upgradation of GGPS Badeen Tehsil Kotmoman District Sargodha to Elementary level	10.00
Medium Term					
135	Sargodha	School Education	Medium Term	Establishment of Govt. Associate College For Boys Chak No. 75/SB DISTRICT SARGODHA	160.00
136	Sargodha	School Education	Medium Term	Establishment of Govt. Associate College For Women Chak No. 75/SB DISTRICT SARGODHA	160.00
137	Sargodha	School Education	Medium Term	Establishment of Govt. Associate College For Women Jhawarian DISTRICT SARGODHA	160.00
138	Sargodha	School Education	Medium Term	Provision of Missing Facilities GACW MELA MANDI SARGODHA	27.00
139	Sargodha	Higher Education	Medium Term	Provision of Missing Facilities Govt. Associate College For Women, Chak No. 36/SB Sargodha	37.00
140	Sargodha	Higher Education	Medium Term	Provision of Missing Facilities Govt. Associate College Miani SGD	1.00

Sr. No.	District	Sector	Type	Project Name	Total Cost (PKR Million)
141	Sargodha	Higher Education	Medium Term	Provision of Missing Facilities Govt. Associate College, Kot Momin.	7.50
142	Sargodha	Higher Education	Medium Term	Provision of Missing Facilities Govt. Ambala Muslim Graduate College Sargodha	70.00
143	Sargodha	Higher Education	Medium Term	Provision of Missing Facilities GOVT.ASSOCIATE COLLEGE FOR WOMEN KOTMOMIN(SGD)	5.00
144	Sargodha	Higher Education	Medium Term	Provision of Missing Facilities Govt. Associate College for Boys Shahpur Saddar	35.00
145	Sargodha	Higher Education	Medium Term	Provision of Missing Facilities Govt. Graduate College Bhalwal	79.00
146	Sargodha	Higher Education	Medium Term	Provision of Missing Facilities Govt. Graduate College for Women Sargodha	339.00
147	Sargodha	School Education	Medium Term	Provision of IT labs in 90 High Schools	225.00
148	Sargodha	School Education	Medium Term	Provision of Science labs in 176 High Schools	53.00
149	Sargodha	School Education	Medium Term	Provision of Science labs in 303 Schools	1595.00
150	Sargodha	School Education	Medium Term	Provision of Missing facilities in 108 Schools	467.00
TOTAL COST (MILLION PKR)					16326.16 Million PKR
					16.3 Billion PKR



The Urban Unit

Urban Order Planning & Management Services and Pvt. Ltd.




503 - Shaheen Complex, Egerton Road, Lahore - Pakistan


☎ 042-99205316-22

☎ 042-99205323

✉ uspmu@punjab.gov.pk

🌐 www.urbanunit.gov.pk

 [TheUrbanUnit](https://www.facebook.com/TheUrbanUnit)

 [urbanunitGop](https://twitter.com/urbanunitGop)